

Communication Channels and Users

January, 2014



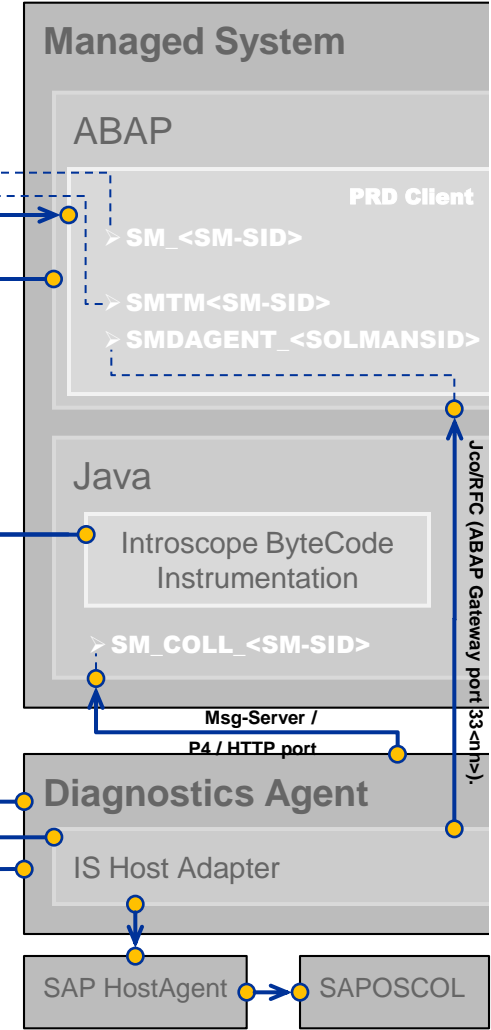
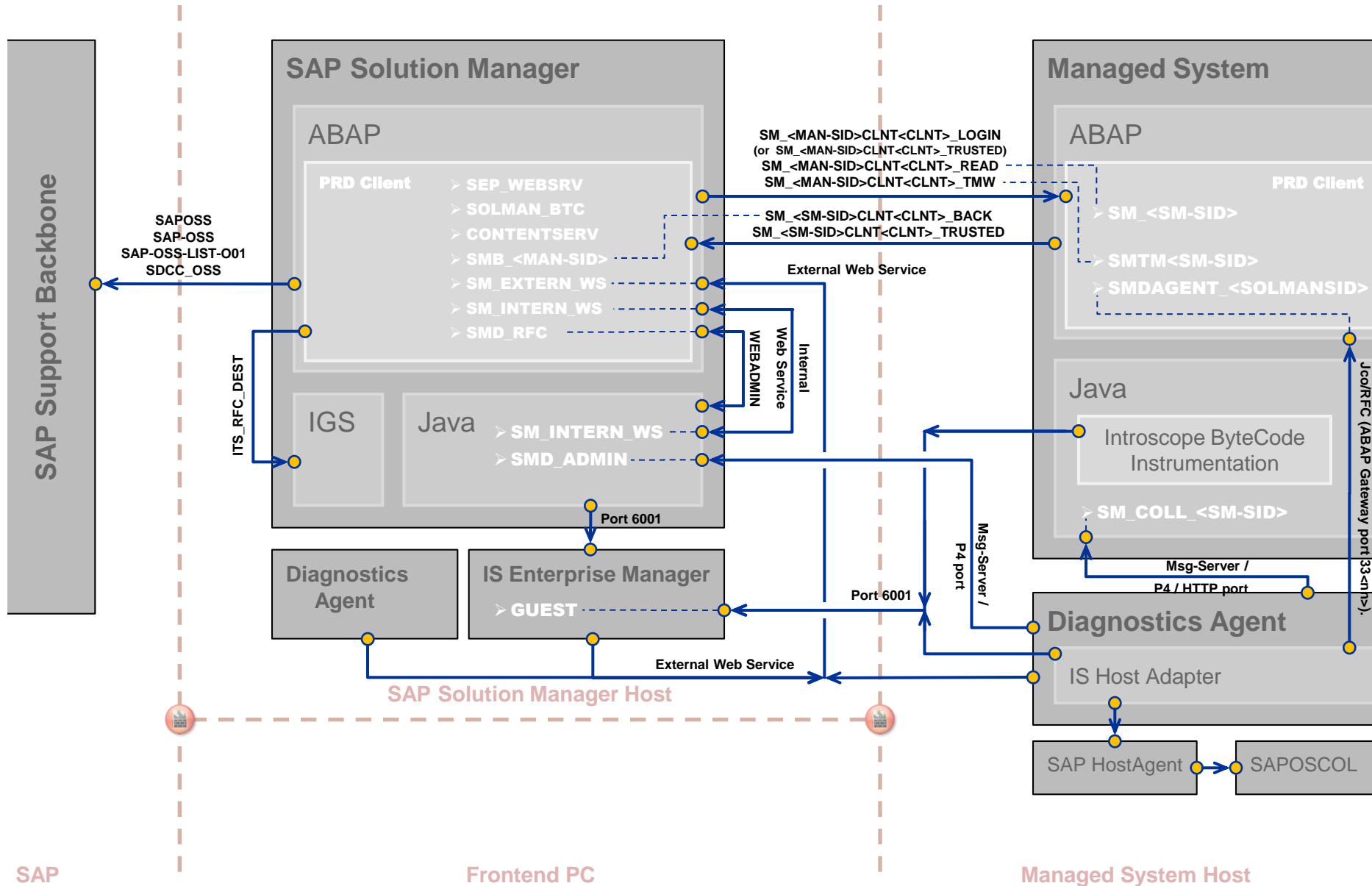
Agenda



1. **Technical Infrastructure after SOLMAN_SETUP**
2. BI Infrastructure
3. SLD / LMDB Landscape
4. Scenario Infrastructure

Technical Infrastructure after SOLMAN_SETUP

SAP Solution Manager and Managed System



SM_<MAN-SID>CLNT<CLNT>_LOGIN
(or SM_<MAN-SID>CLNT<CLNT>_TRUSTED)
SM_<MAN-SID>CLNT<CLNT>_READ
SM_<MAN-SID>CLNT<CLNT>_TMW

SM_<SM-SID>CLNT<CLNT>_BACK
SM_<SM-SID>CLNT<CLNT>_TRUSTED

External Web Service

Internal Web Service

Port 6001

Port 6001

Msg-Server / P4 port

Msg-Server / P4 / HTTP port

Jcoo/RFC (ABAP Gateway port 33<n>)

SAP Solution Manager Host

Managed System Host

SAP

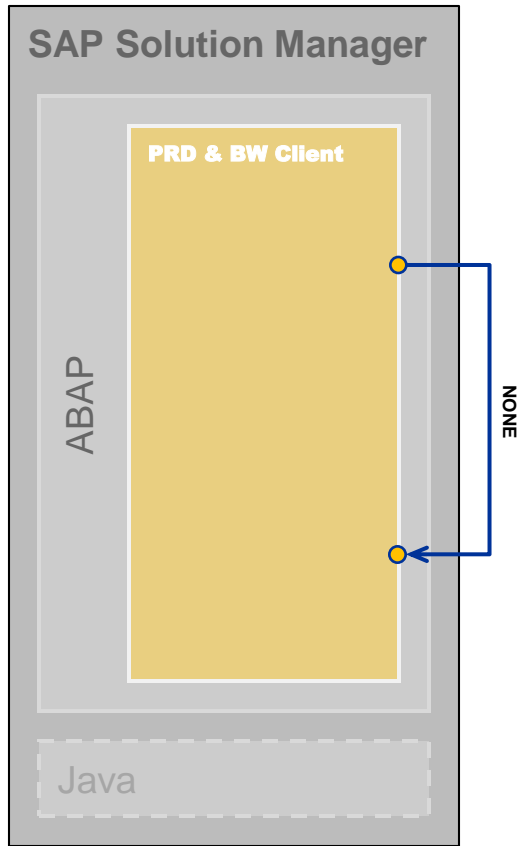
Frontend PC

Technical Infrastructure after SOLMAN_SETUP

BI-Content for SAP Solution Manager (three options)

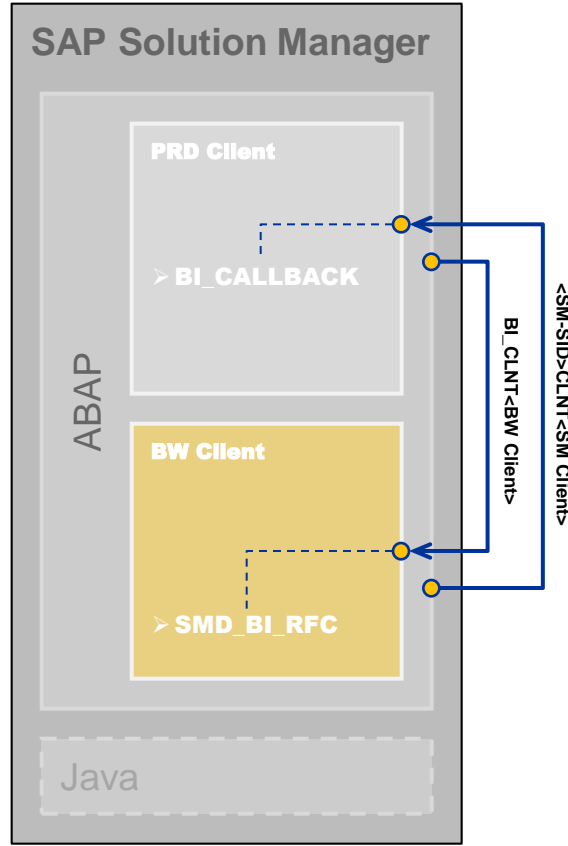
Option 1

(BI-Content activated on SAP Solution Manager productive client)



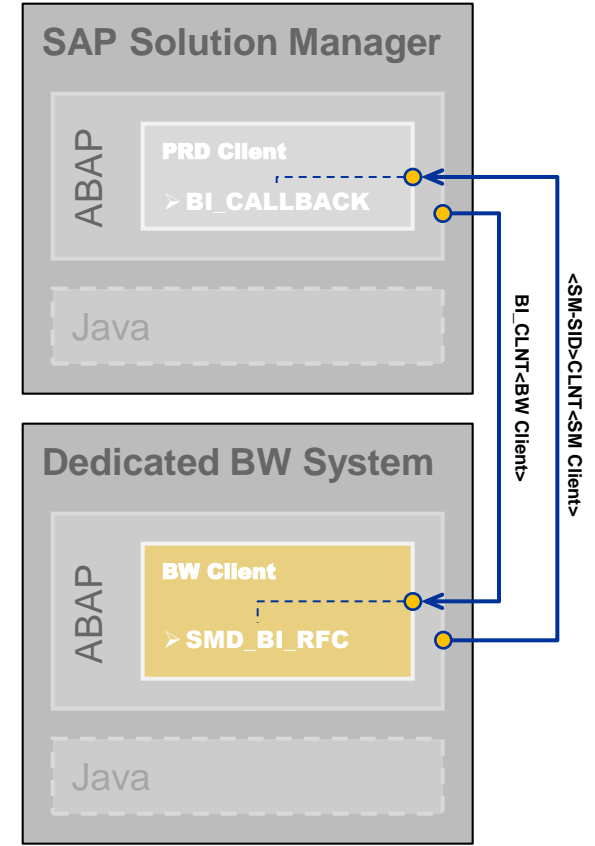
Option 2

(BI-Content activated on Solution Manager in a separate client)



Option 3

(BI-Content activated on a dedicated BW System)



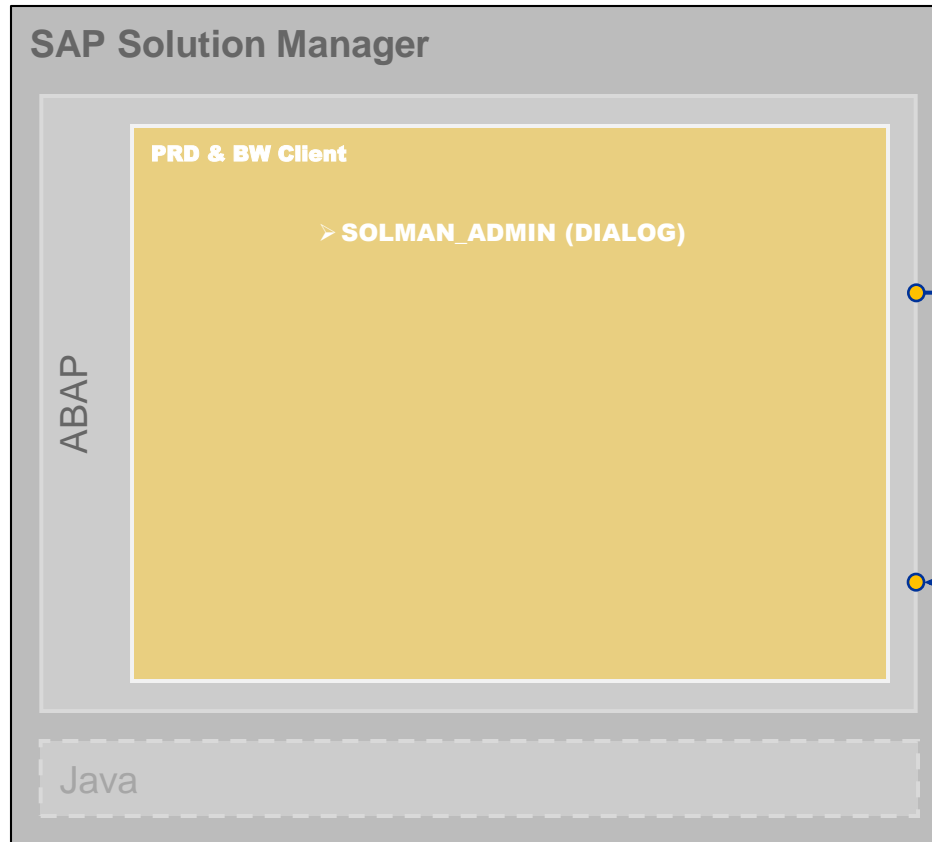
Agenda



1. Technical Infrastructure after SOLMAN_SETUP
- 2. BI Infrastructure**
3. SLD / LMDB Landscape
4. Scenario Infrastructure

Initial BW Configuration and Activation

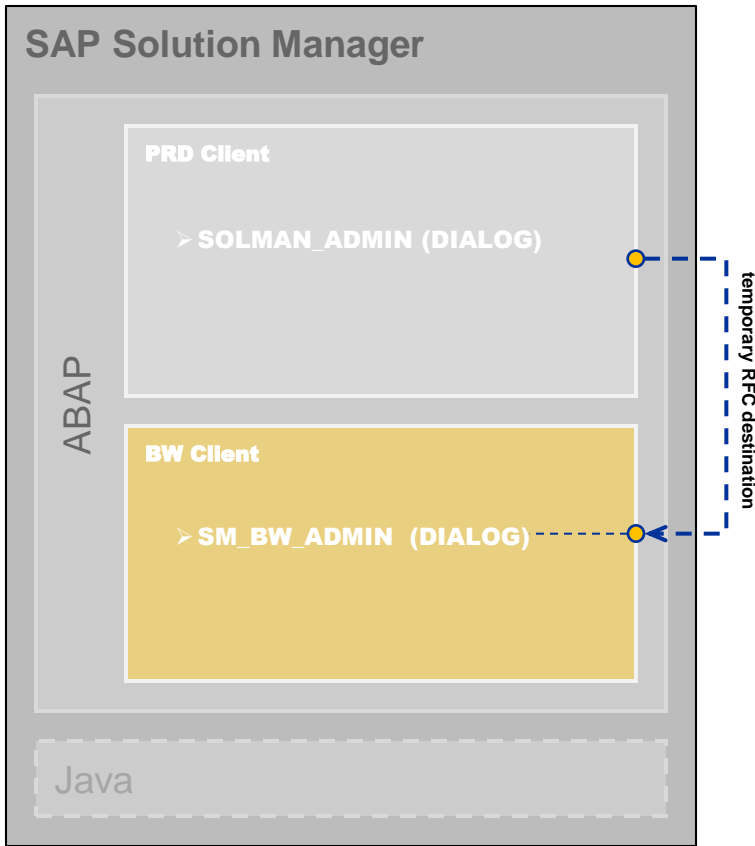
Standard BW Scenario



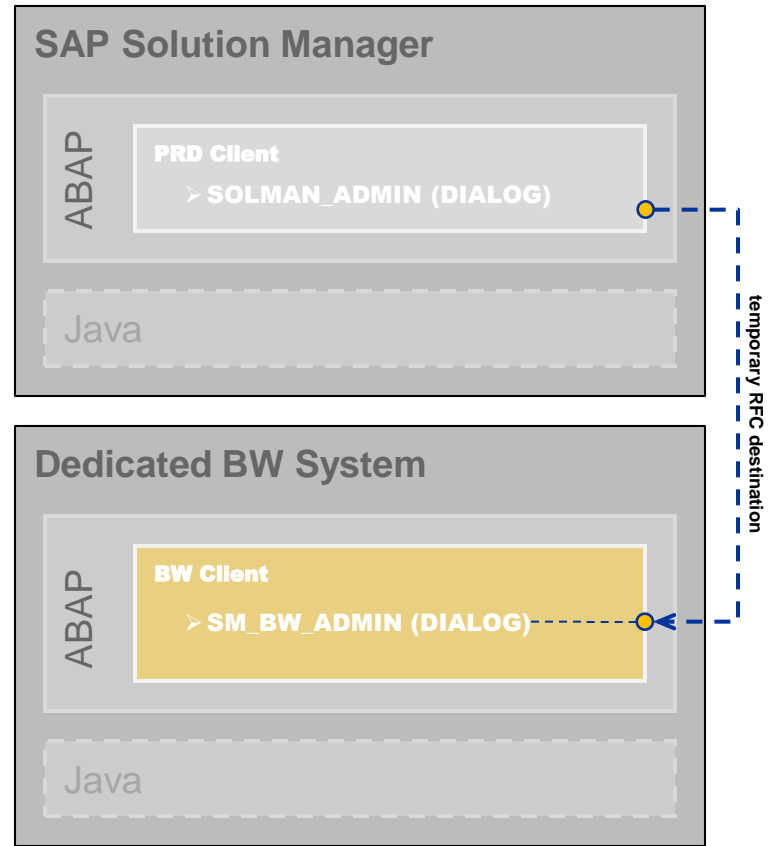
Initial BW Configuration and Activation

Remote BW Scenarios

**BW within Solution Manager
system in another client**

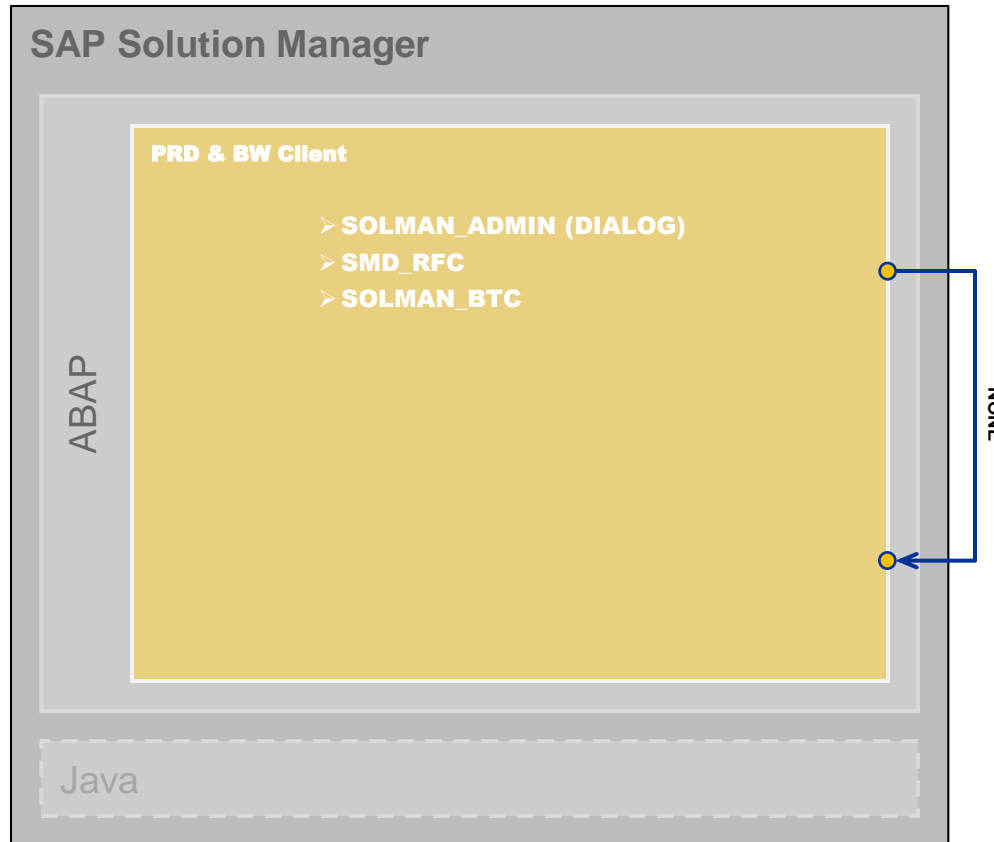


BW in another system



Scenario-Specific Activation, Data Extraction and Display

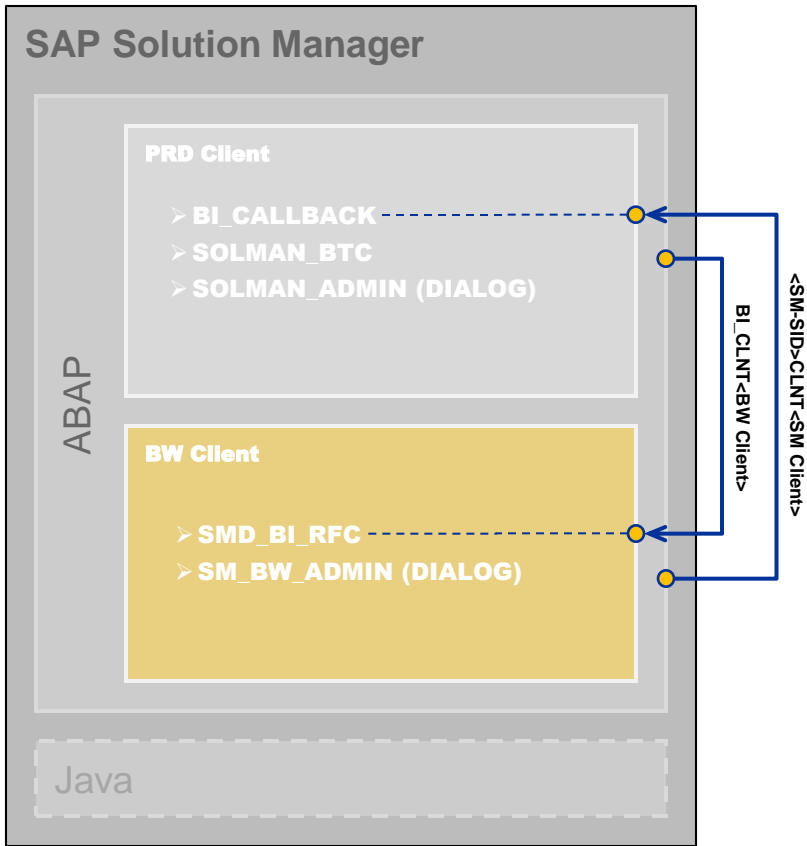
Standard BW Scenario



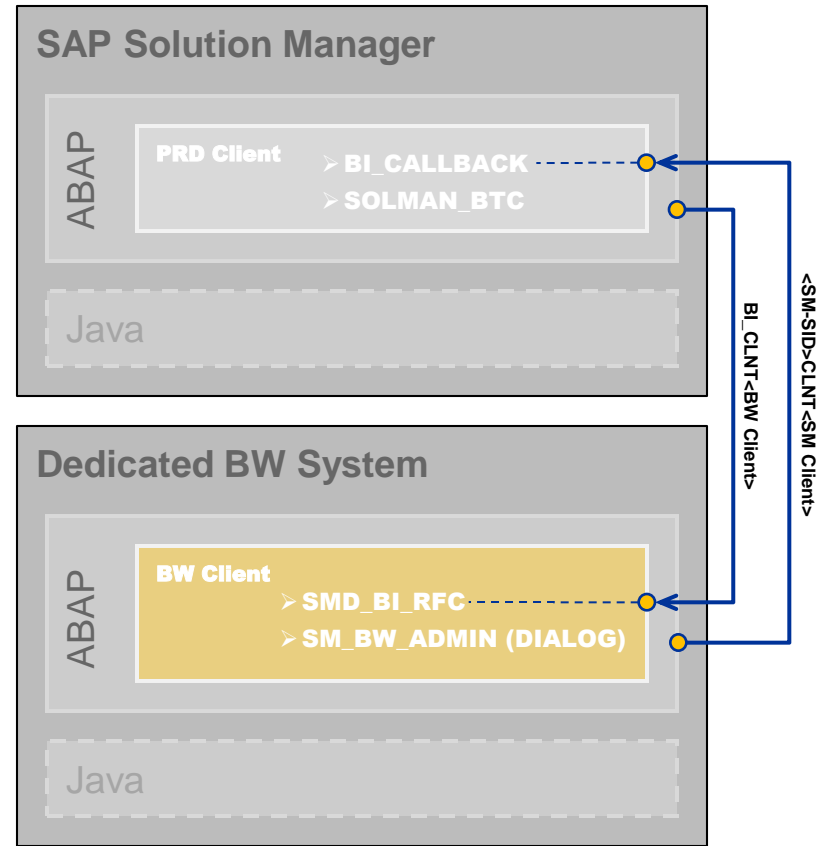
Scenario-Specific Activation, Data Extraction and Display

Remote BW Scenarios

**BW within Solution Manager
system in another client**



BW in another system

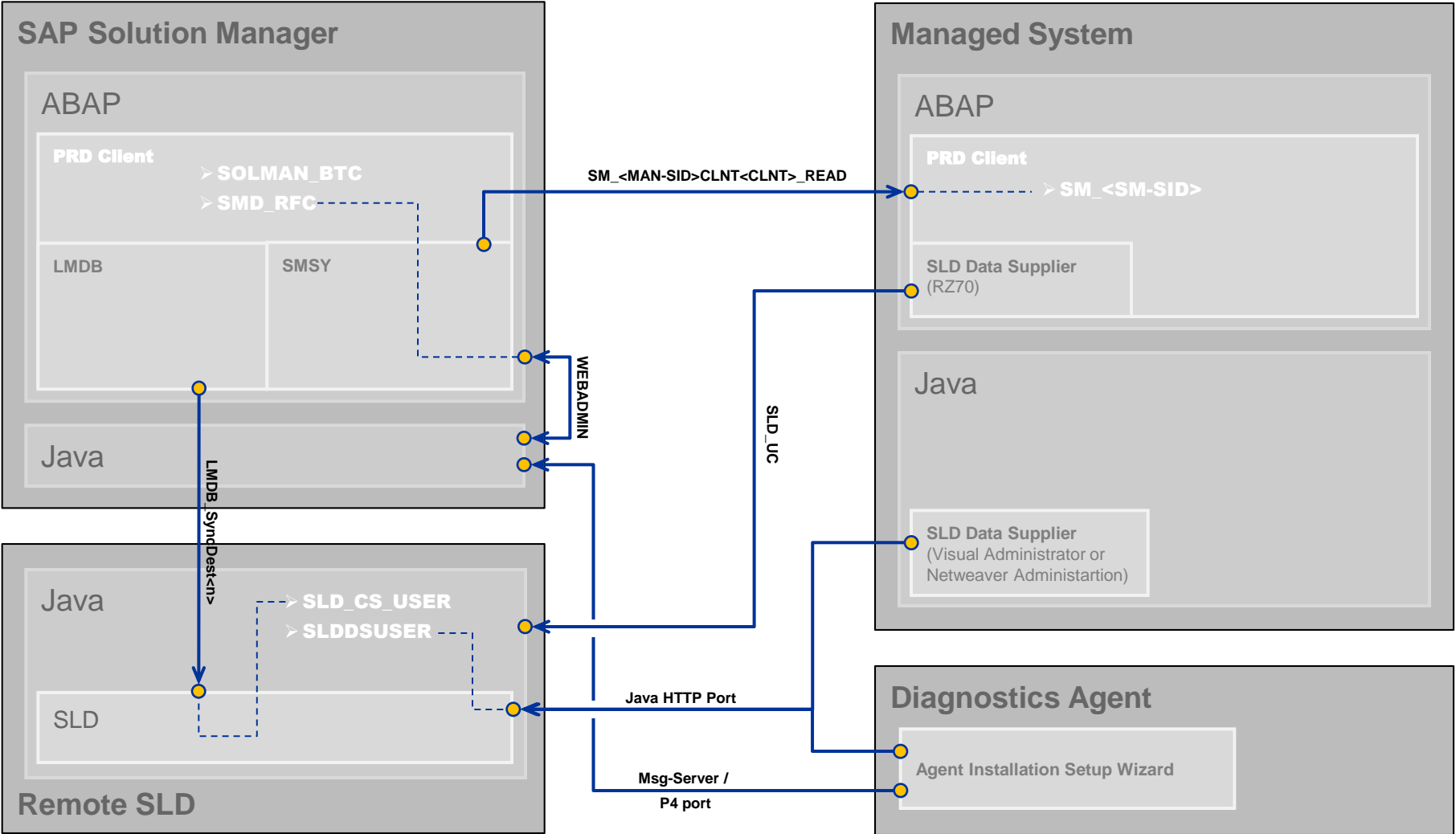


Agenda

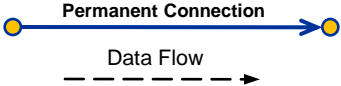
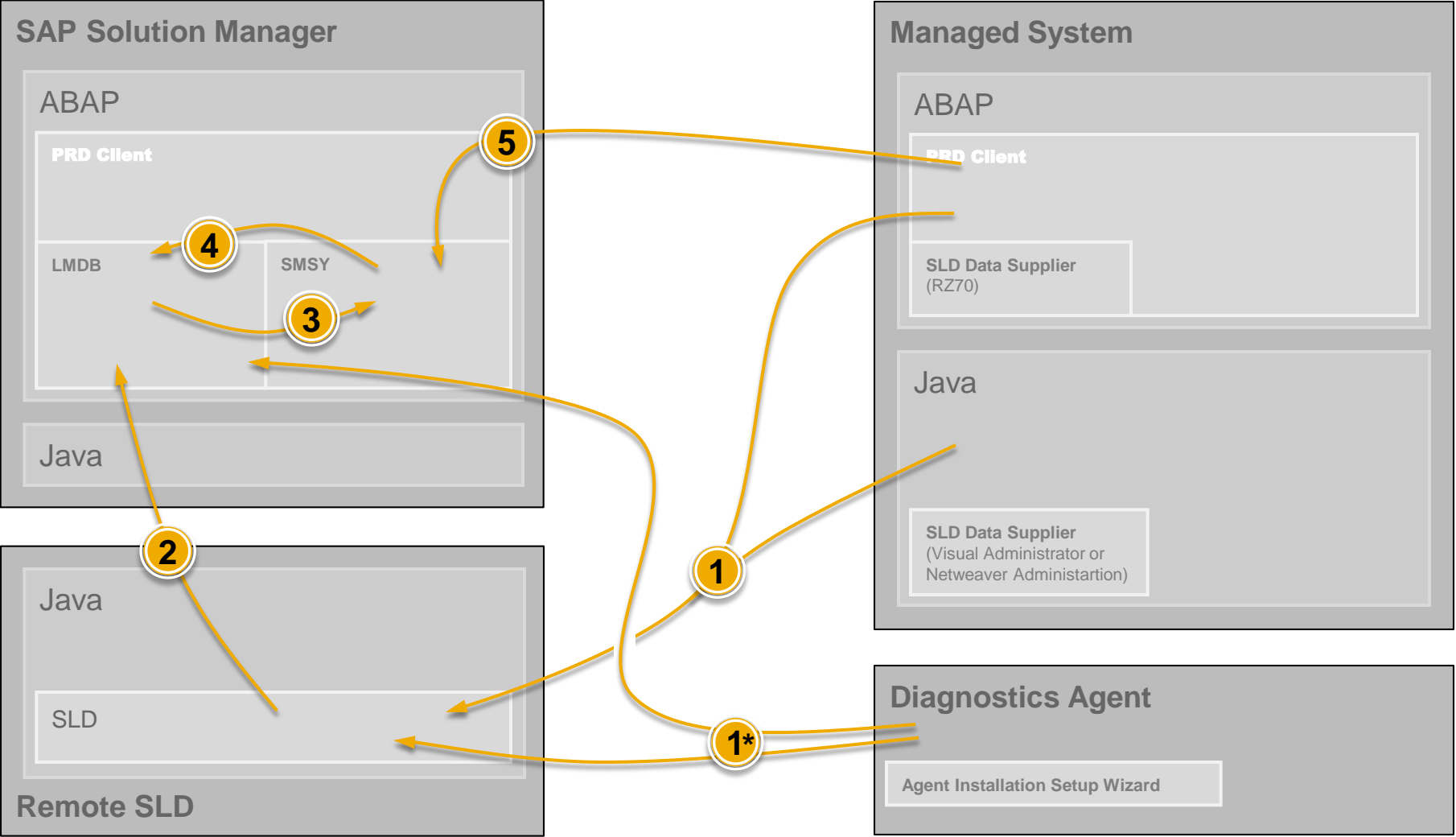


1. Technical Infrastructure after SOLMAN_SETUP
2. BI Infrastructure
- 3. SLD / LMDB Landscape**
4. Scenario Infrastructure

LMDB : Communication Channels and Destinations



LMDB : Data Flow for Technical System Information



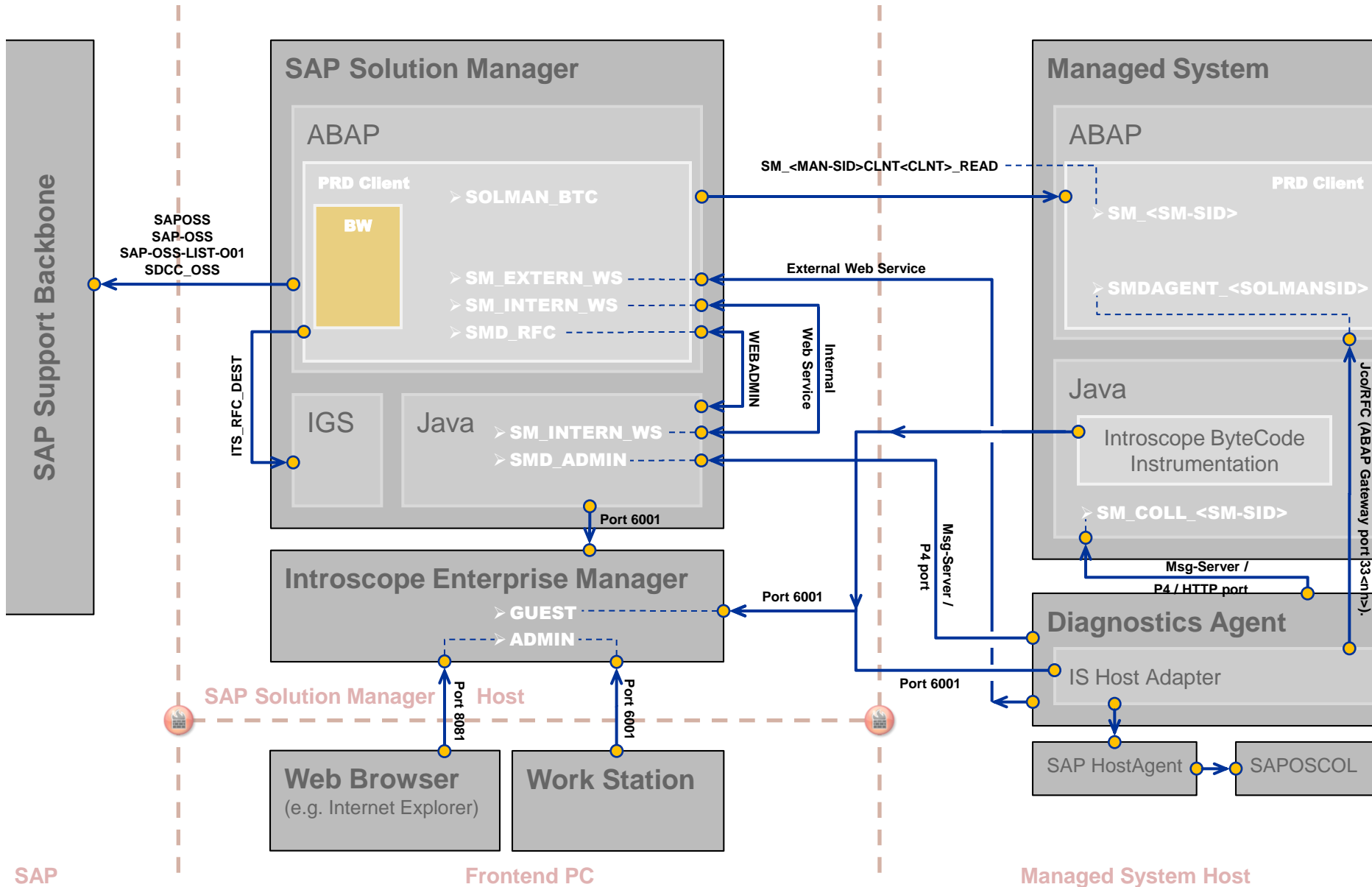
Agenda



1. Technical Infrastructure after SOLMAN_SETUP
2. BI Infrastructure
3. SLD / LMDB Landscape
4. **Scenario Infrastructure**

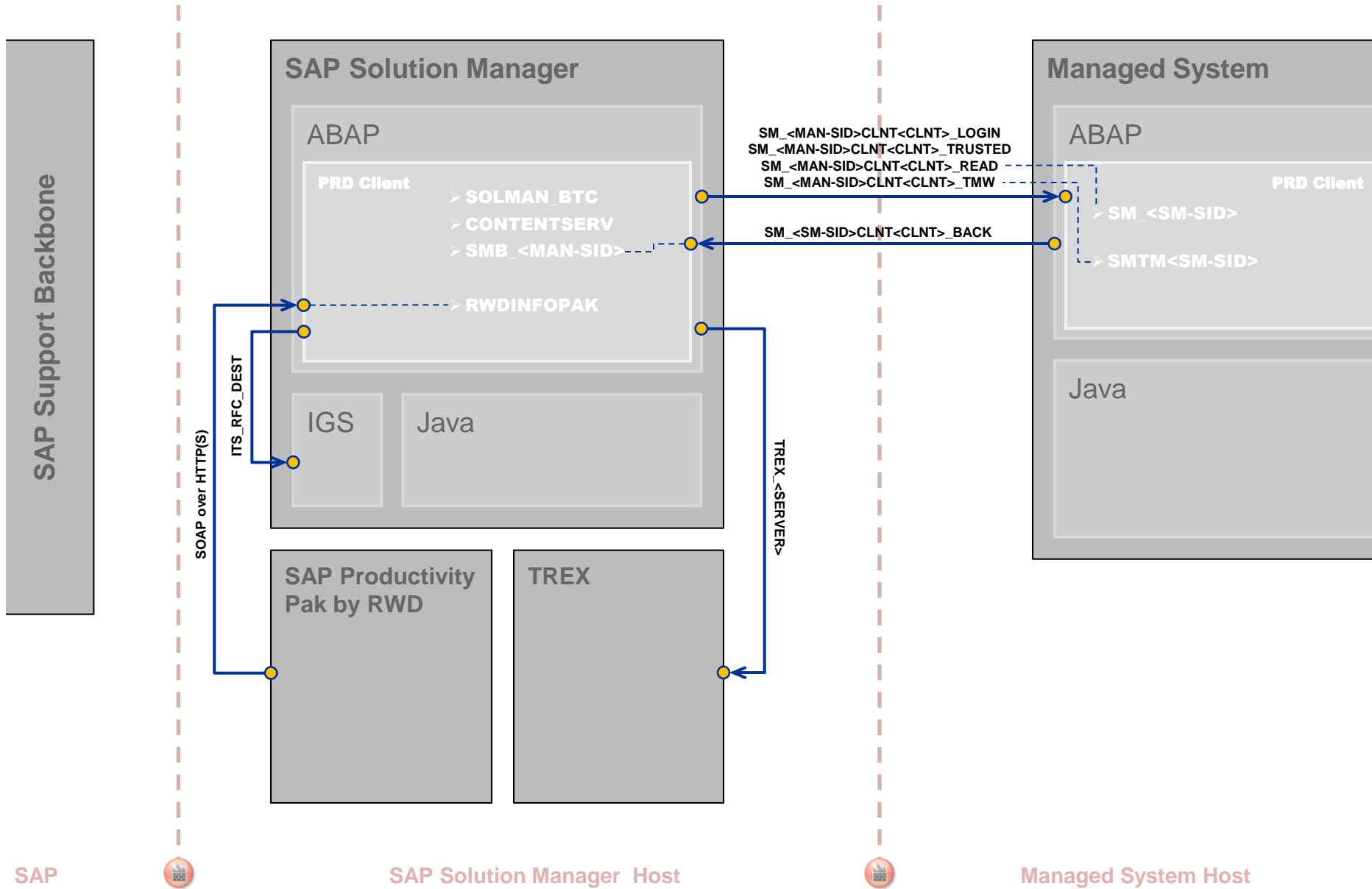
Technical Infrastructure

Root Cause Analysis



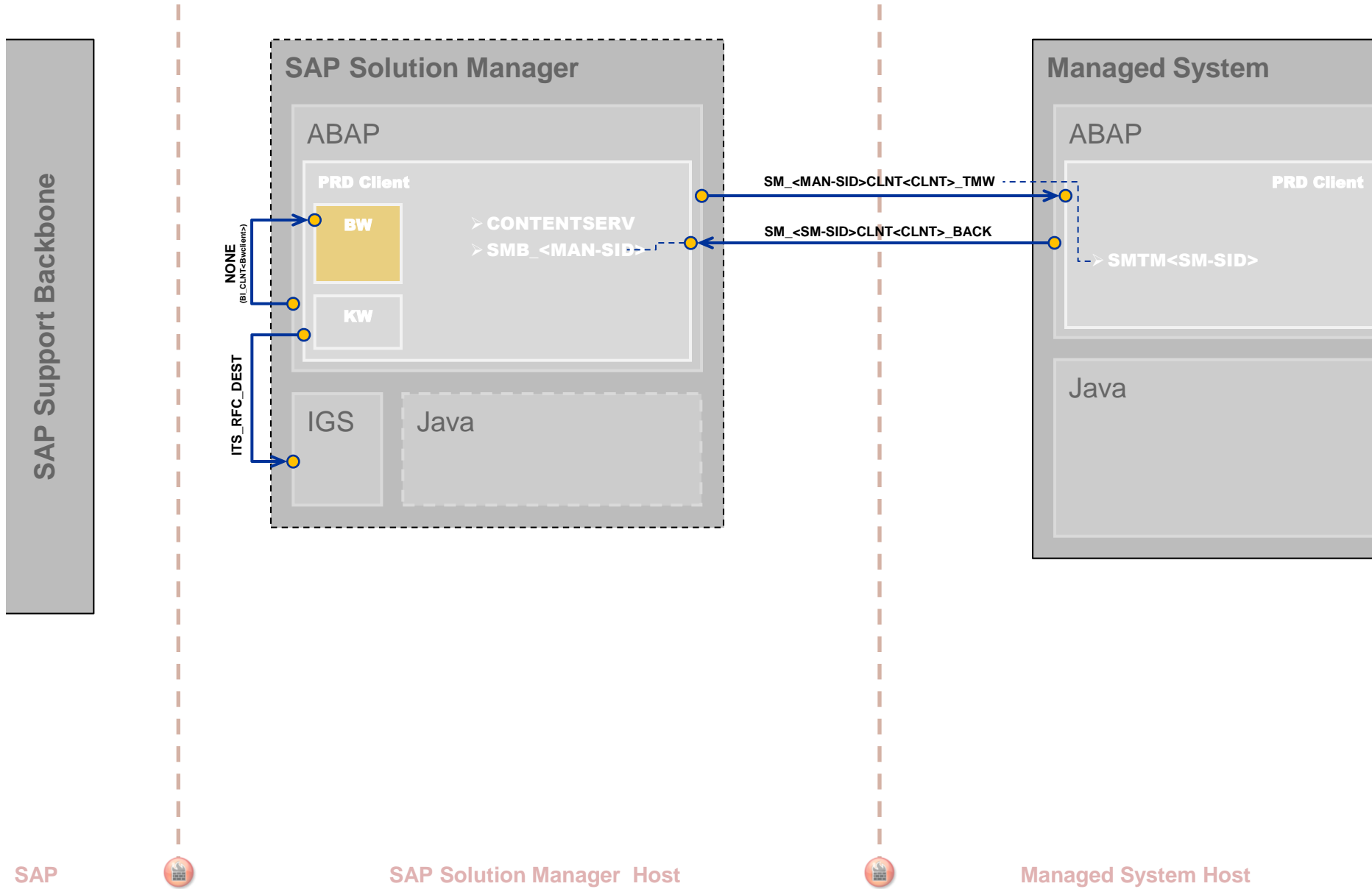
Technical Infrastructure

Implementation and Upgrade



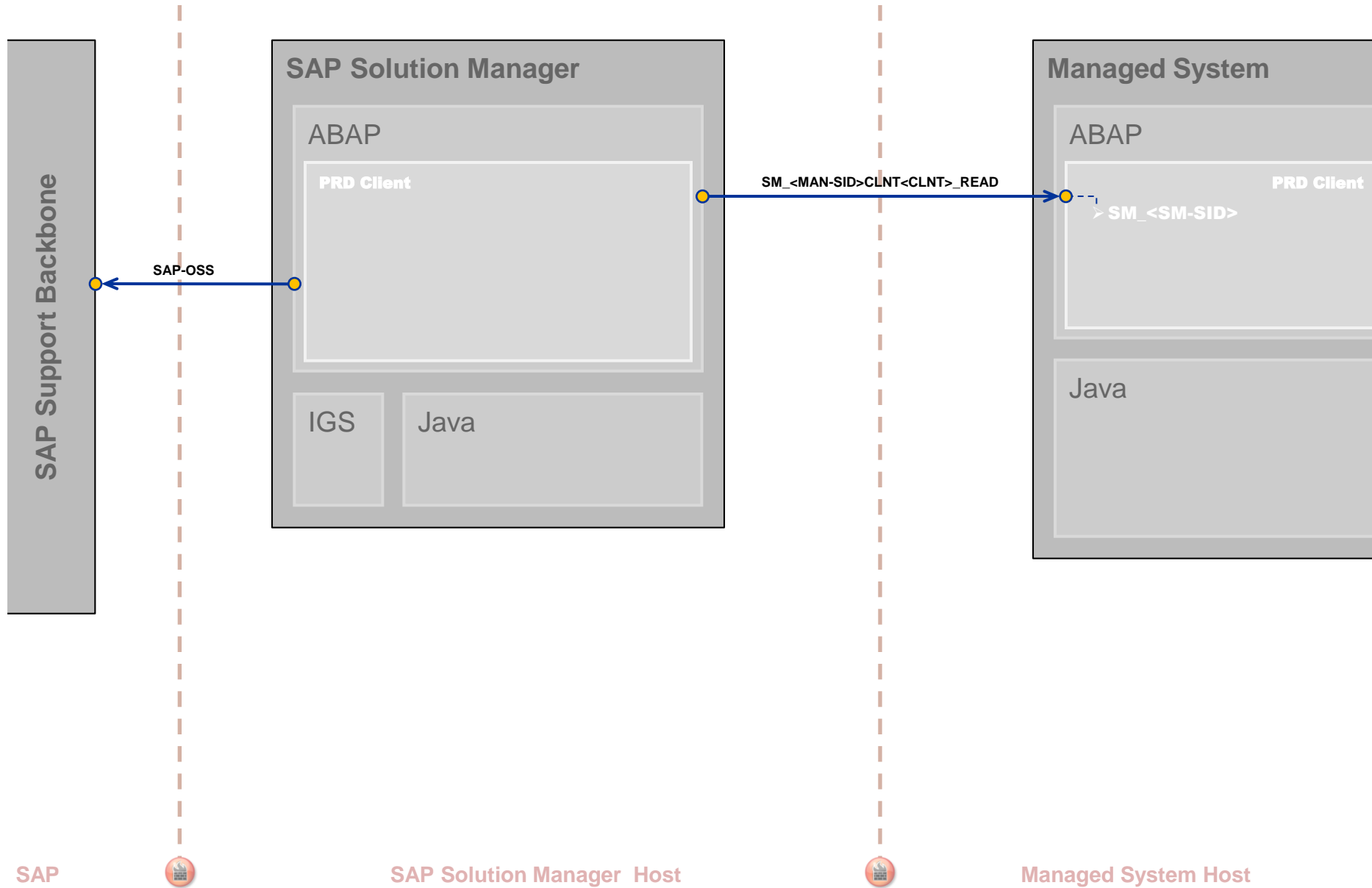
Technical Infrastructure

Solution Documentation Assistant



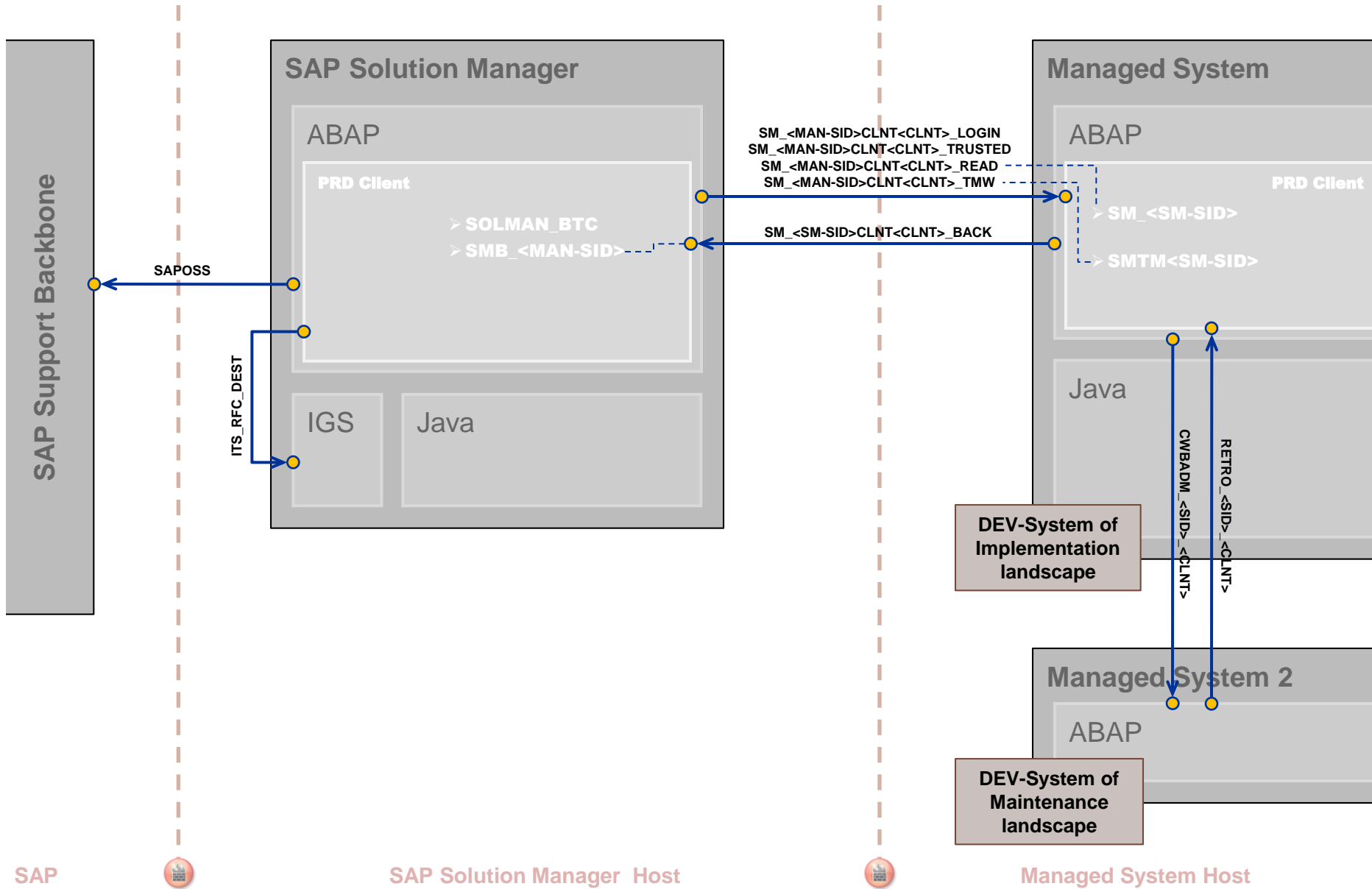
Technical Infrastructure

Maintenance Optimizer (incl. VAR scenario)



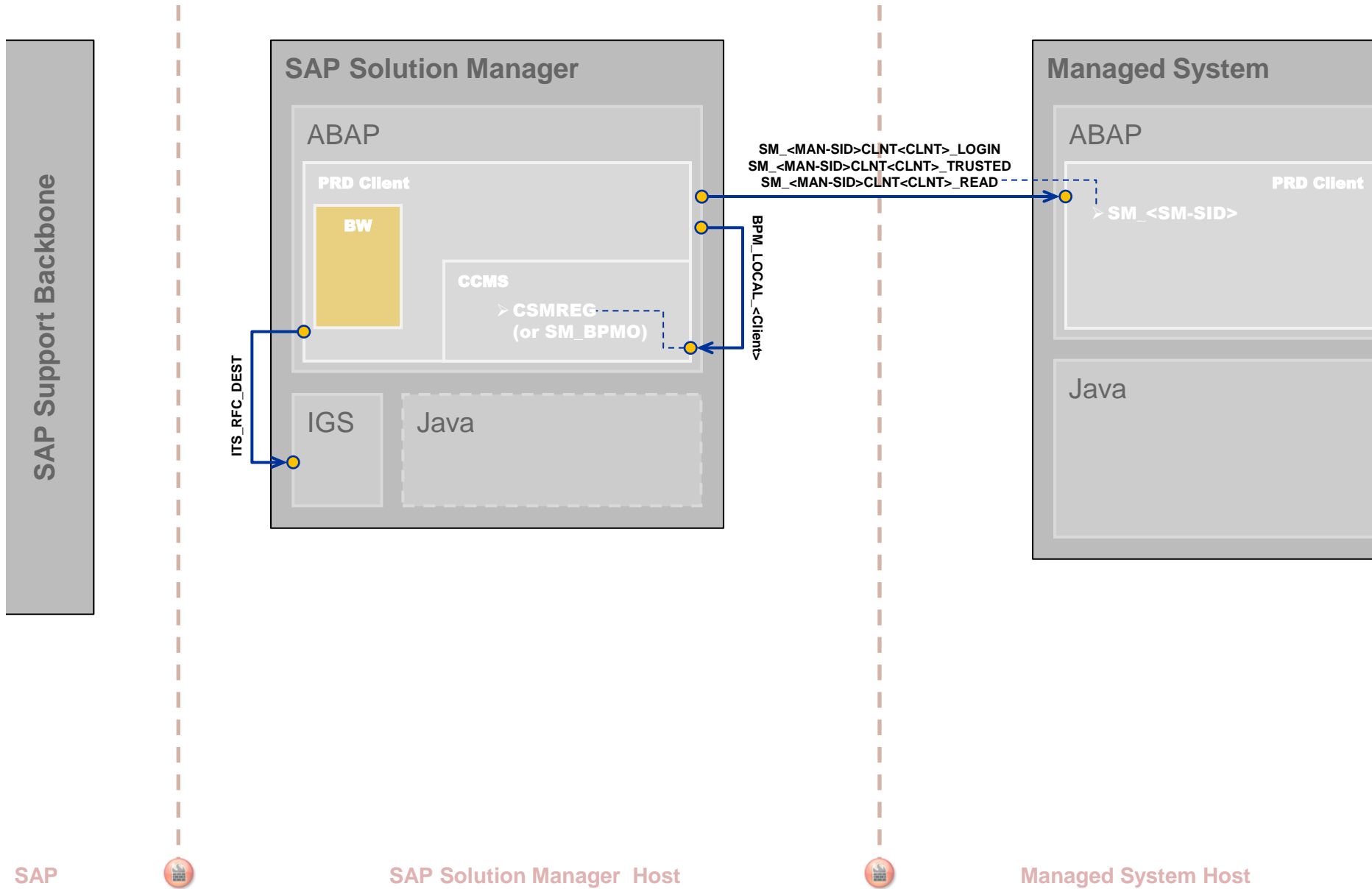
Technical Infrastructure

Change Request Management



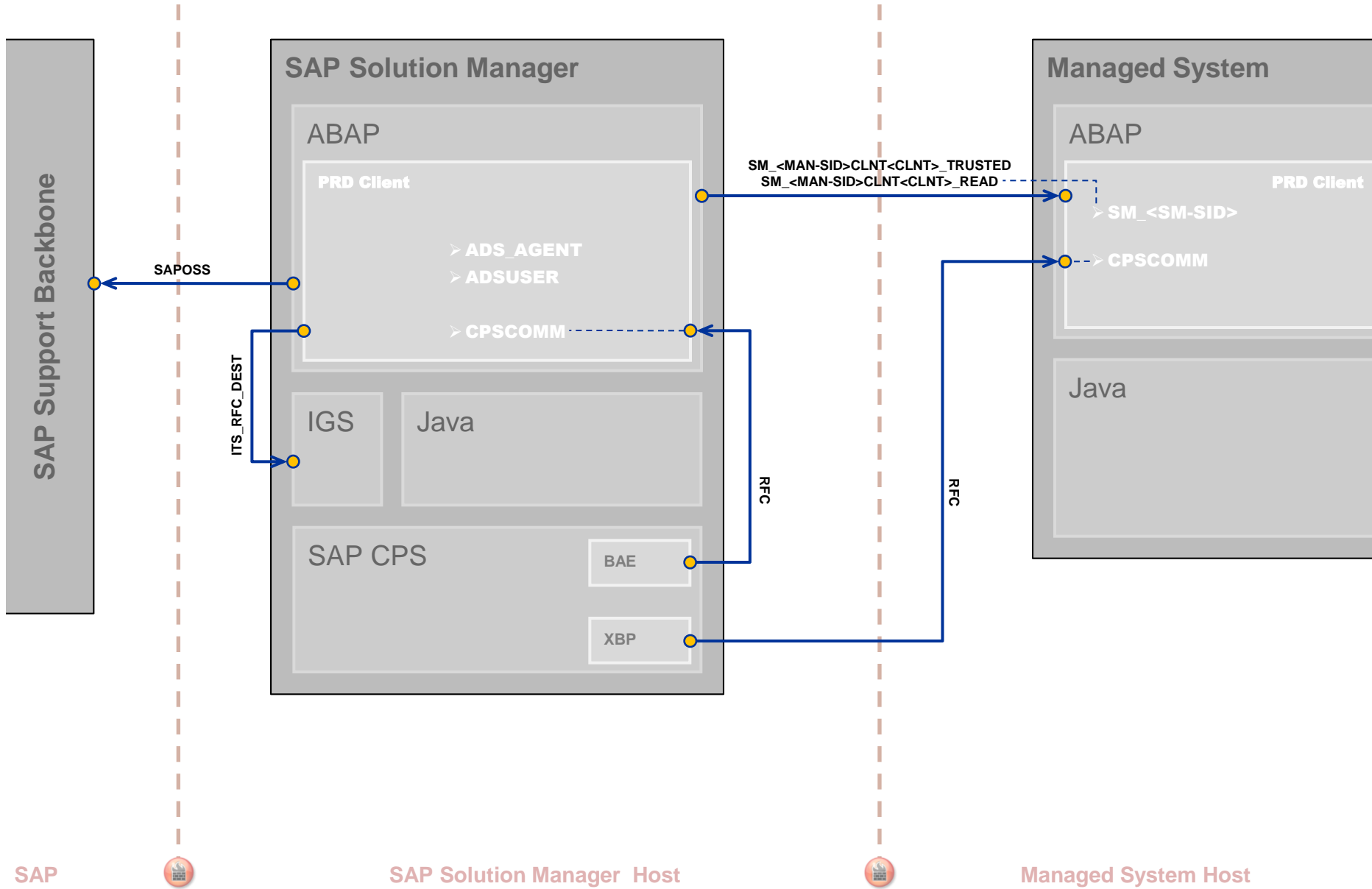
Technical Infrastructure

Business Process Operations



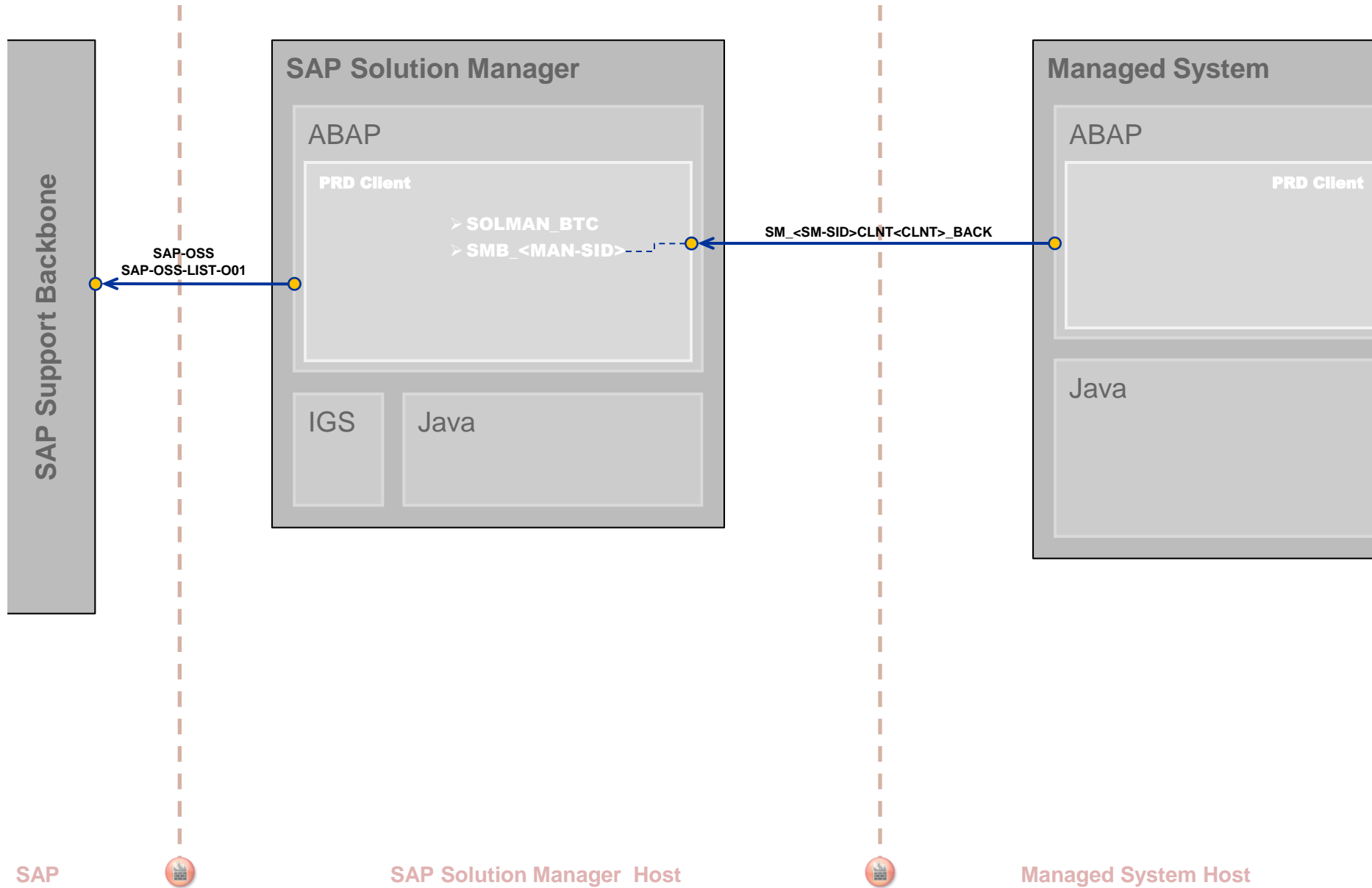
Technical Infrastructure

Job Management



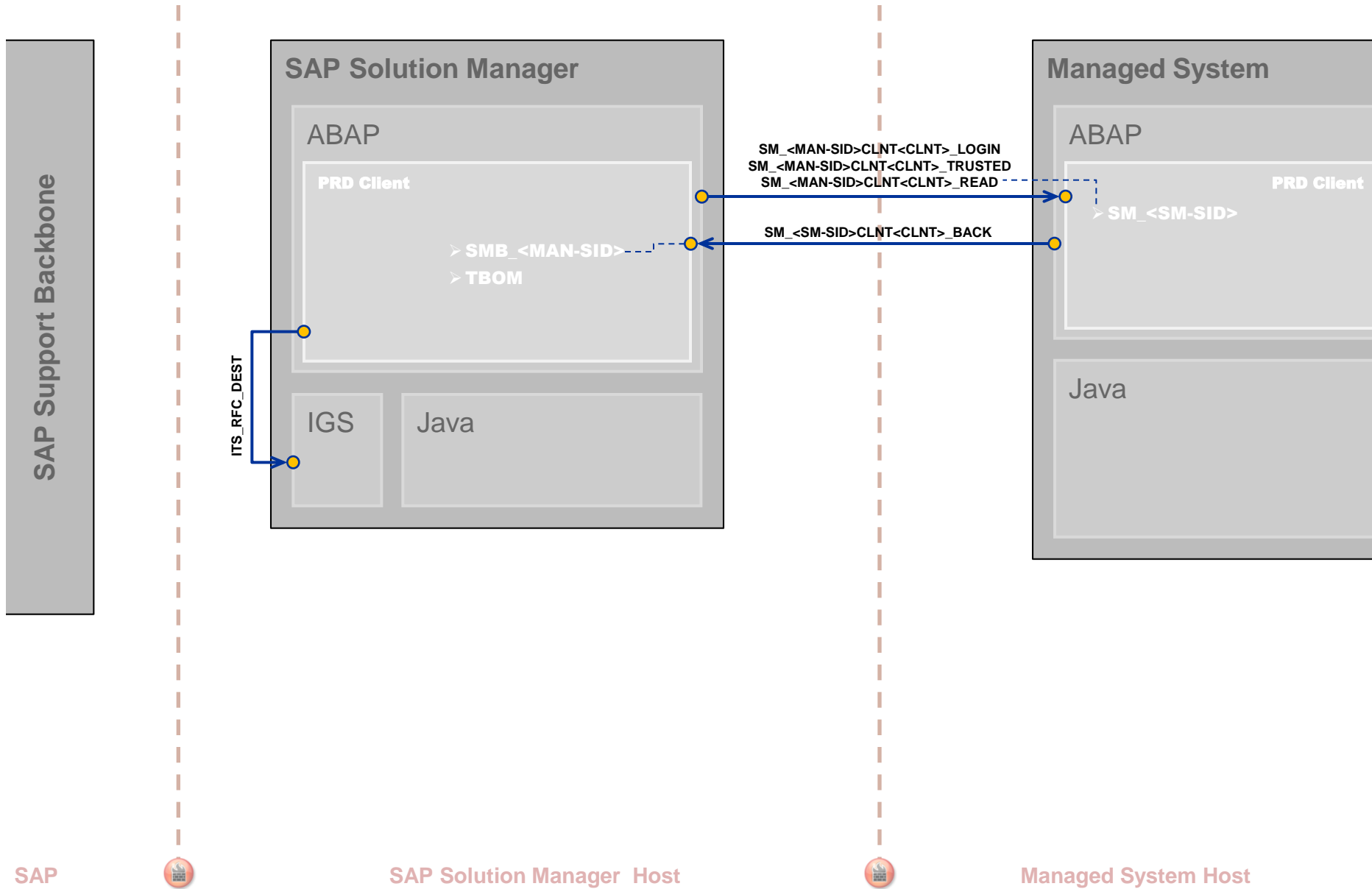
Technical Infrastructure

Application Incident Management



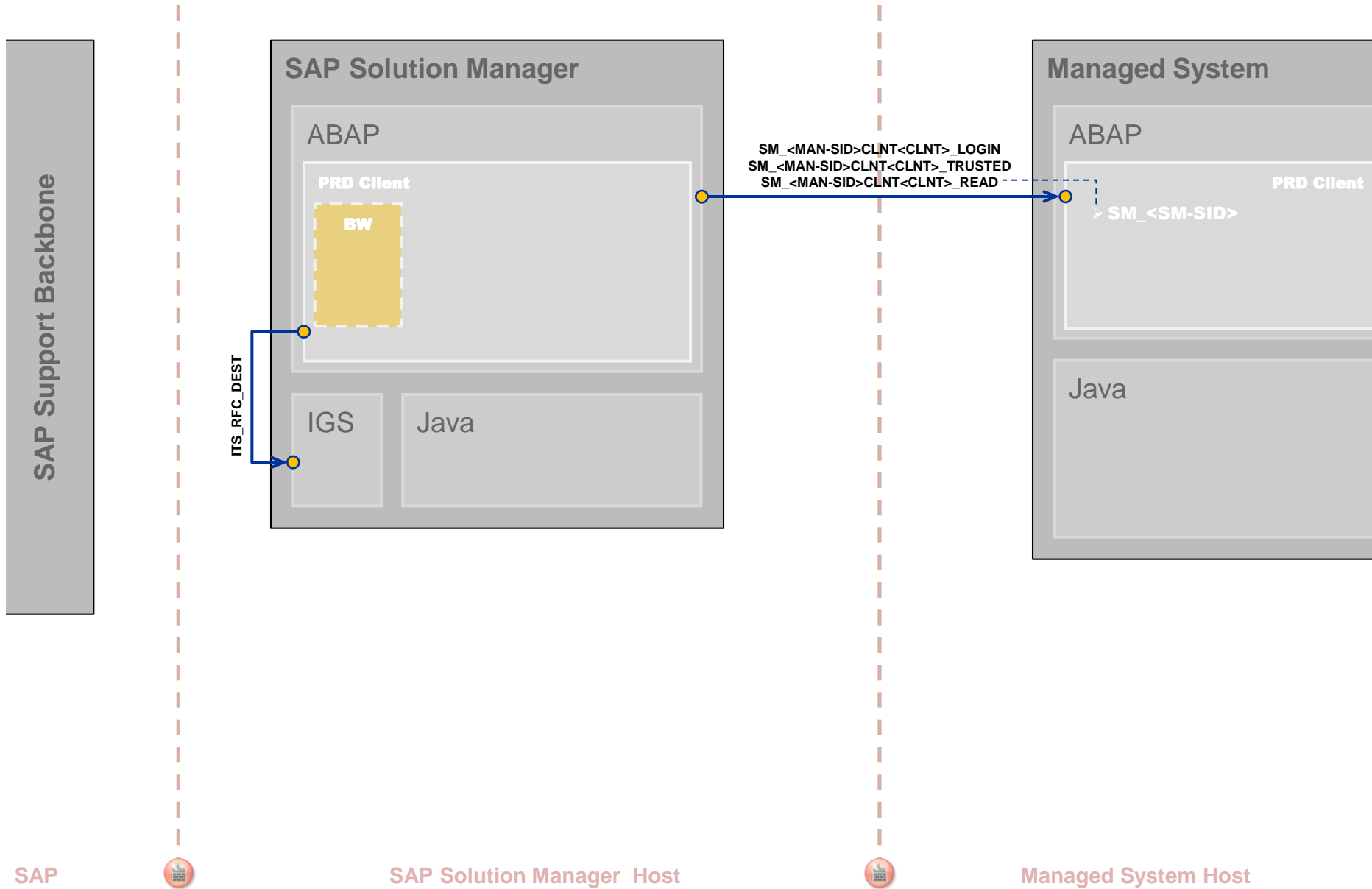
Technical Infrastructure

Business Process Change Analyzer



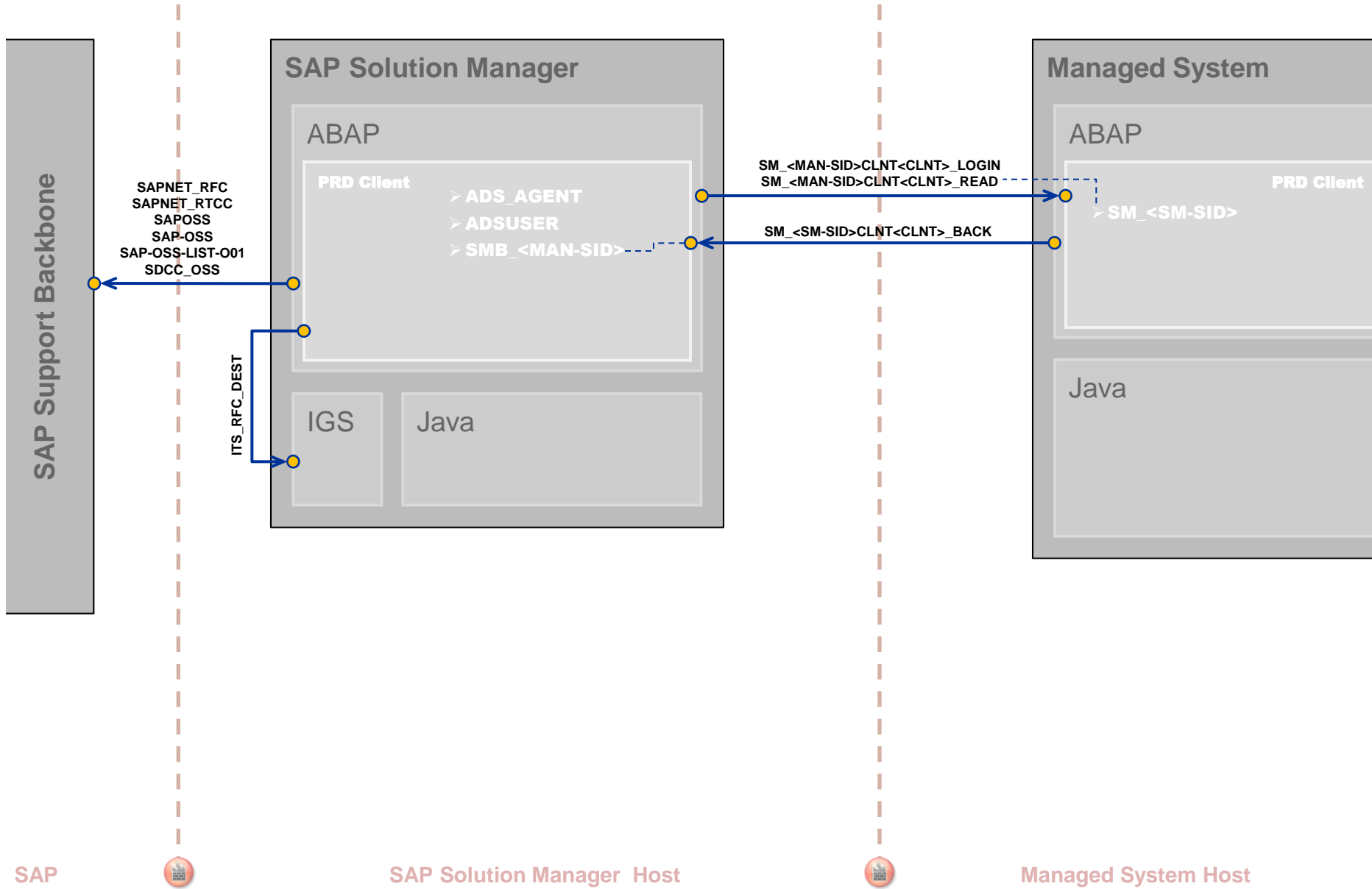
Technical Infrastructure

Test Management



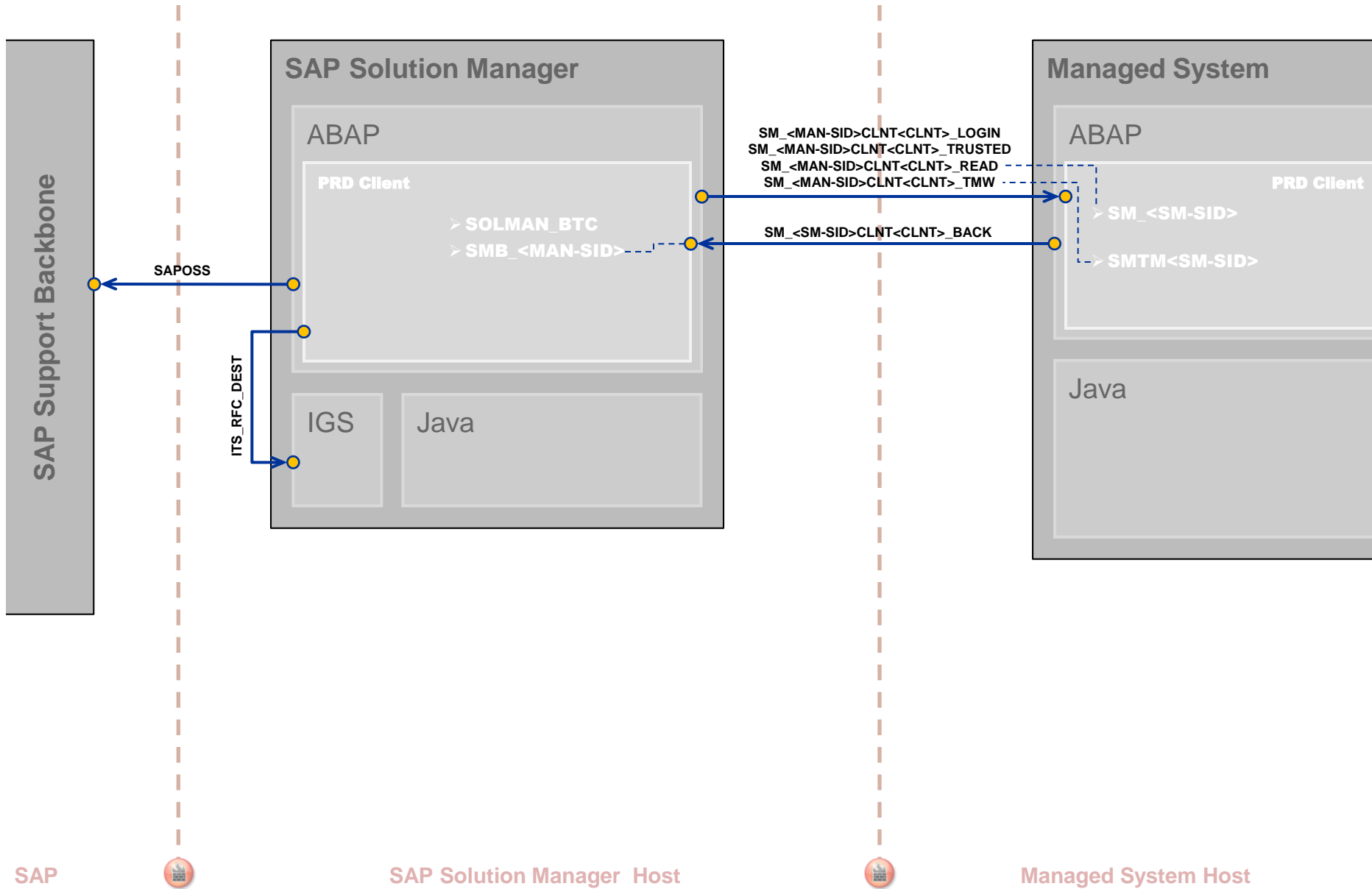
Technical Infrastructure

SAP Engagement and Service Delivery



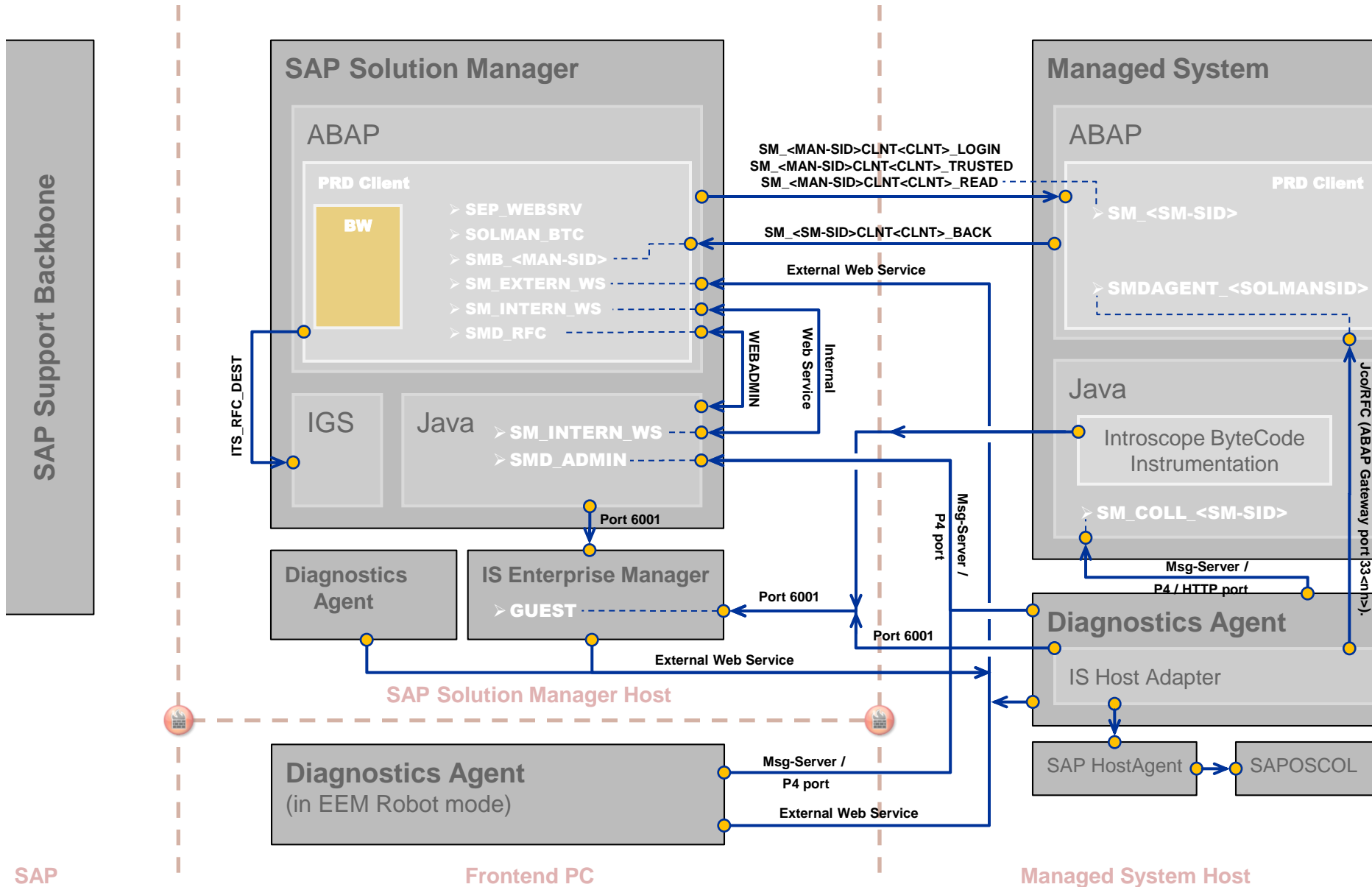
Technical Infrastructure

Quality Gate Management



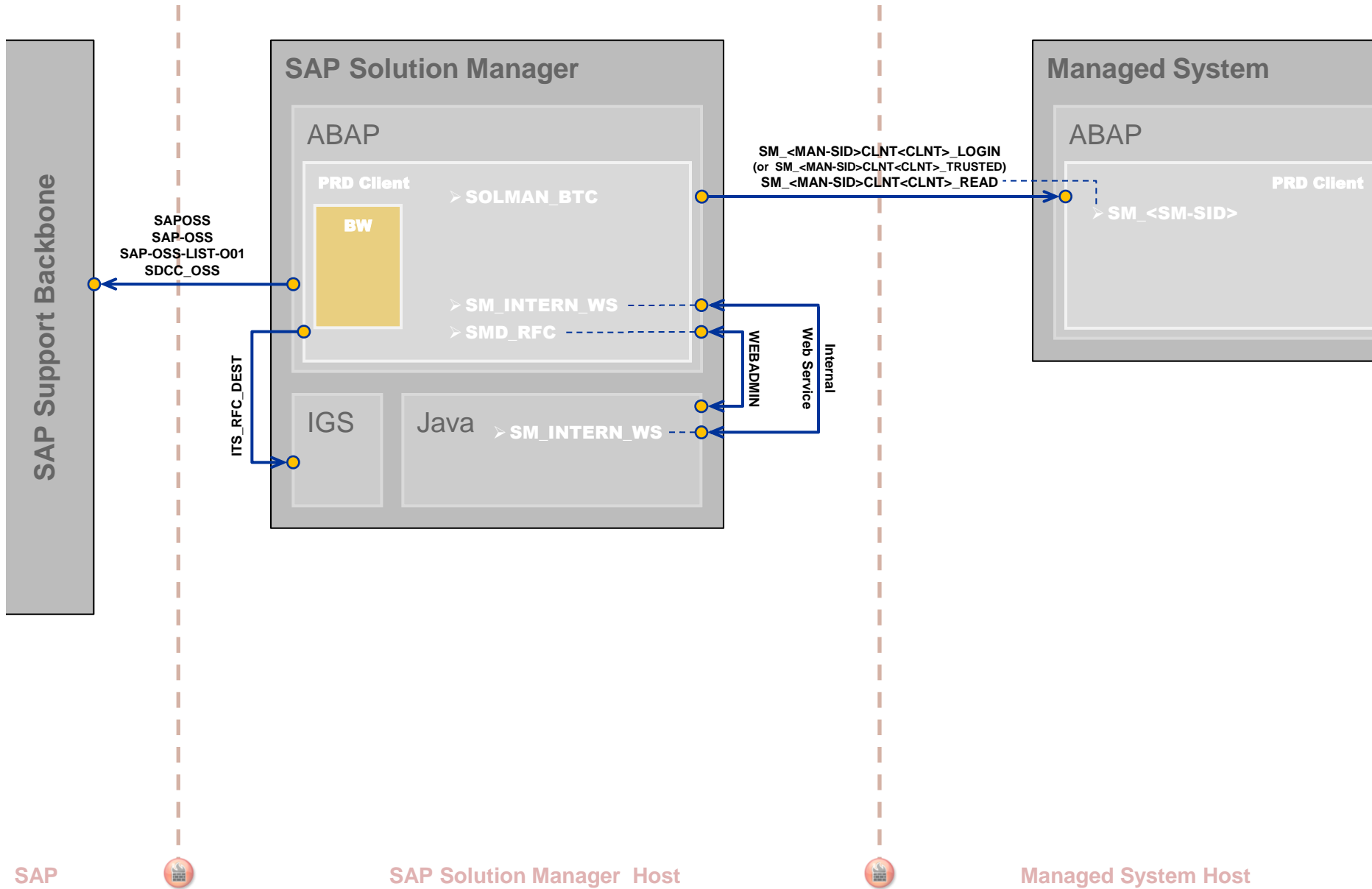
Technical Infrastructure

Technical Monitoring



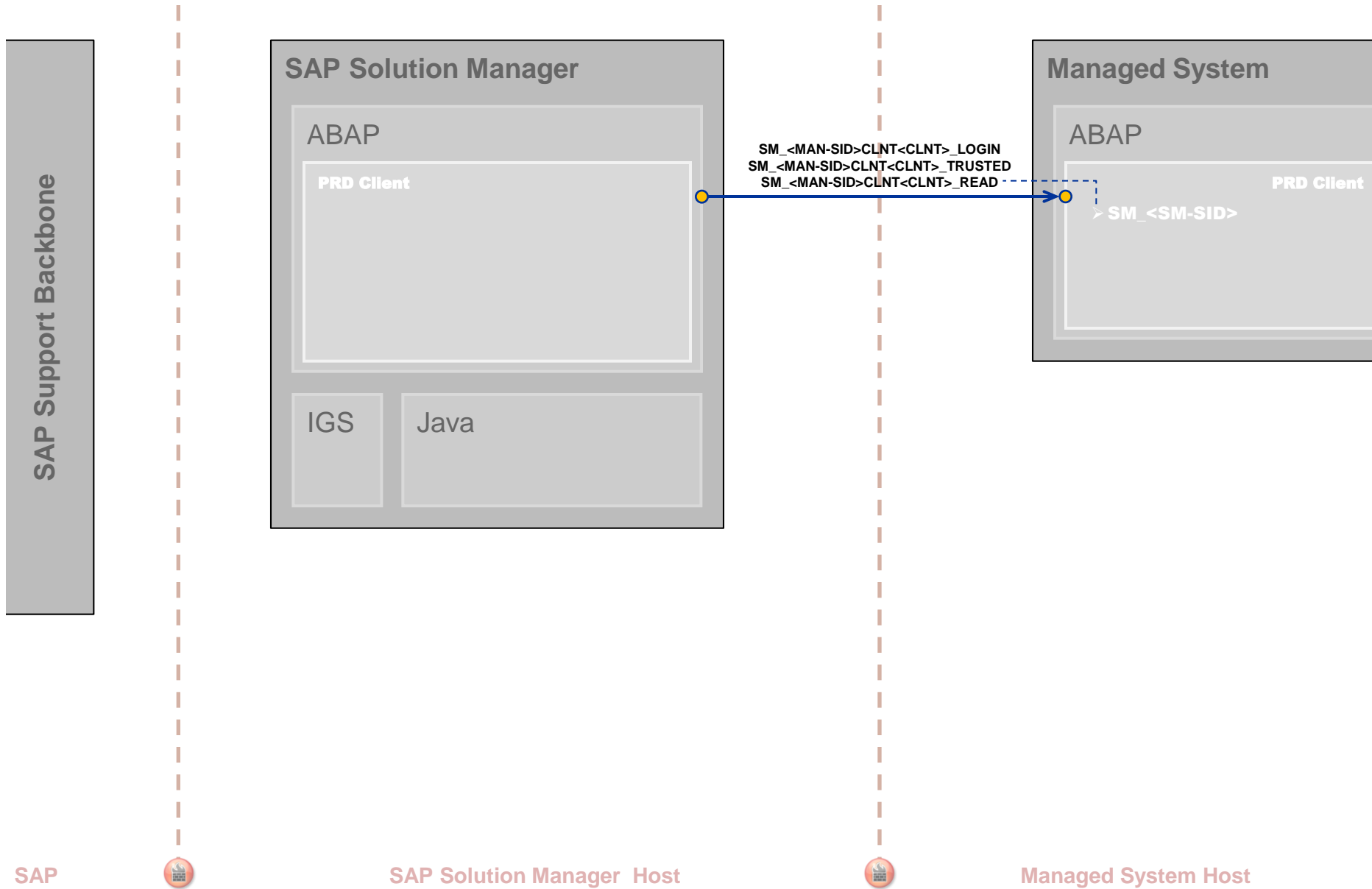
Technical Infrastructure

Data Volume Management



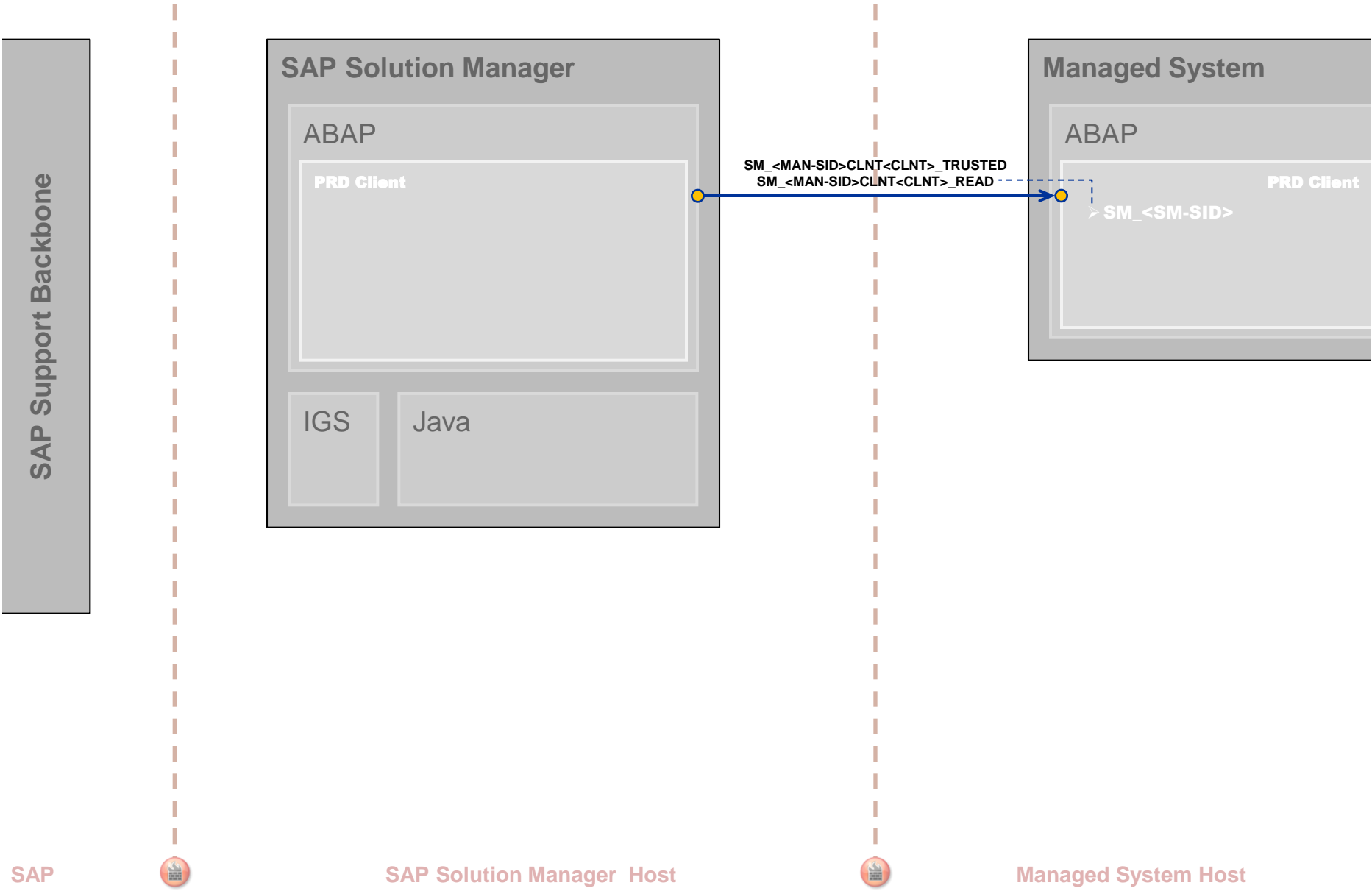
Technical Infrastructure

Technical Administration



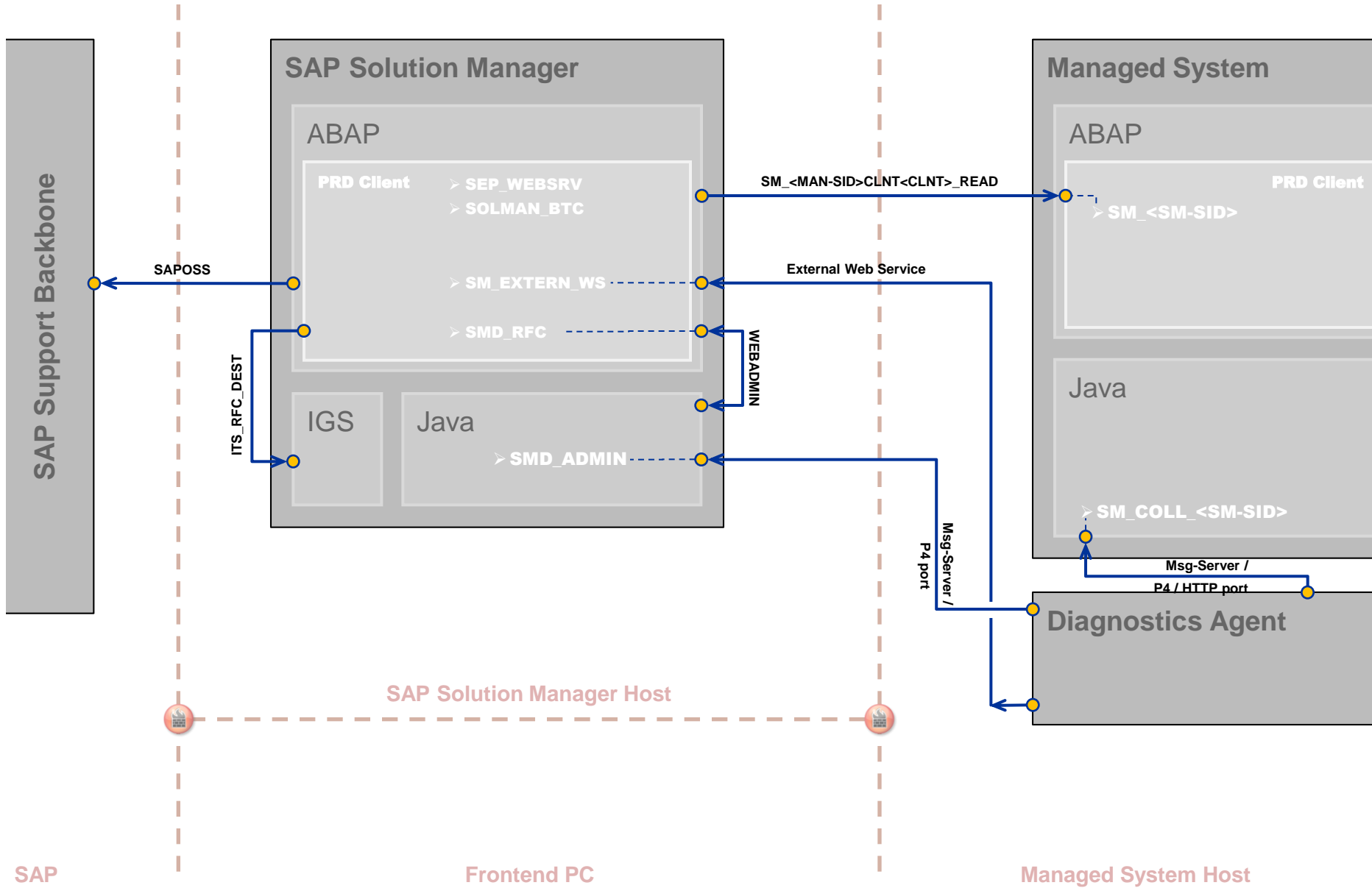
Technical Infrastructure

Custom Code Lifecycle Management



Technical Infrastructure

Configuration Validation



© 2012 SAP AG. All rights reserved.

No part of this publication may be reproduced or transmitted in any form or for any purpose without the express permission of SAP AG. The information contained herein may be changed without prior notice.

Some software products marketed by SAP AG and its distributors contain proprietary software components of other software vendors.

Microsoft, Windows, Excel, Outlook, PowerPoint, Silverlight, and Visual Studio are registered trademarks of Microsoft Corporation.

IBM, DB2, DB2 Universal Database, System i, System i5, System p, System p5, System x, System z, System z10, z10, z/VM, z/OS, OS/390, zEnterprise, PowerVM, Power Architecture, Power Systems, POWER7, POWER6+, POWER6, POWER, PowerHA, pureScale, PowerPC, BladeCenter, System Storage, Storwize, XIV, GPFS, HACMP, RETAIN, DB2 Connect, RACF, Redbooks, OS/2, AIX, Intelligent Miner, WebSphere, Tivoli, Informix, and Smarter Planet are trademarks or registered trademarks of IBM Corporation.

Linux is the registered trademark of Linus Torvalds in the United States and other countries.

Adobe, the Adobe logo, Acrobat, PostScript, and Reader are trademarks or registered trademarks of Adobe Systems Incorporated in the United States and other countries.

Oracle and Java are registered trademarks of Oracle and its affiliates.

UNIX, X/Open, OSF/1, and Motif are registered trademarks of the Open Group.

Citrix, ICA, Program Neighborhood, MetaFrame, WinFrame, VideoFrame, and MultiWin are trademarks or registered trademarks of Citrix Systems Inc.

HTML, XML, XHTML, and W3C are trademarks or registered trademarks of W3C®, World Wide Web Consortium, Massachusetts Institute of Technology.

Apple, App Store, iBooks, iPad, iPhone, iPhoto, iPod, iTunes, Multi-Touch, Objective-C, Retina, Safari, Siri, and Xcode are trademarks or registered trademarks of Apple Inc.

IOS is a registered trademark of Cisco Systems Inc.

RIM, BlackBerry, BBM, BlackBerry Curve, BlackBerry Bold, BlackBerry Pearl, BlackBerry Torch, BlackBerry Storm, BlackBerry Storm2, BlackBerry PlayBook, and BlackBerry App World are trademarks or registered trademarks of Research in Motion Limited.

Google App Engine, Google Apps, Google Checkout, Google Data API, Google Maps, Google Mobile Ads, Google Mobile Updater, Google Mobile, Google Store, Google Sync, Google Updater, Google Voice, Google Mail, Gmail, YouTube, Dalvik and Android are trademarks or registered trademarks of Google Inc.

INTERMEC is a registered trademark of Intermec Technologies Corporation.

Wi-Fi is a registered trademark of Wi-Fi Alliance.

Bluetooth is a registered trademark of Bluetooth SIG Inc.

Motorola is a registered trademark of Motorola Trademark Holdings LLC.

Computop is a registered trademark of Computop Wirtschaftsinformatik GmbH.

SAP, R/3, SAP NetWeaver, Duet, PartnerEdge, ByDesign, SAP BusinessObjects Explorer, StreamWork, SAP HANA, and other SAP products and services mentioned herein as well as their respective logos are trademarks or registered trademarks of SAP AG in Germany and other countries.

Business Objects and the Business Objects logo, BusinessObjects, Crystal Reports, Crystal Decisions, Web Intelligence, Xcelsius, and other Business Objects products and services mentioned herein as well as their respective logos are trademarks or registered trademarks of Business Objects Software Ltd. Business Objects is an SAP company.

Sybase and Adaptive Server, iAnywhere, Sybase 365, SQL Anywhere, and other Sybase products and services mentioned herein as well as their respective logos are trademarks or registered trademarks of Sybase Inc. Sybase is an SAP company.

Crossgate, m@gic EDDY, B2B 360°, and B2B 360° Services are registered trademarks of Crossgate AG in Germany and other countries. Crossgate is an SAP company.

All other product and service names mentioned are the trademarks of their respective companies. Data contained in this document serves informational purposes only. National product specifications may vary.

The information in this document is proprietary to SAP. No part of this document may be reproduced, copied, or transmitted in any form or for any purpose without the express prior written permission of SAP AG.