

SAP Manufacturing Execution  
How-To Guide



# **How to Set Up and Use the SAP ME HTML Viewer Feature**

**Applicable Release: ME 6.1**

**Version 2.0**

**August 1, 2013**

# SAP ME How-To-Guide for HTML Viewer

---

© Copyright 2013 SAP AG. All rights reserved.

No part of this publication may be reproduced or transmitted in any form or for any purpose without the express permission of SAP AG. The information contained herein may be changed without prior notice.

Some software products marketed by SAP AG and its distributors contain proprietary software components of other software vendors.

Microsoft, Windows, Outlook, and PowerPoint are registered trademarks of Microsoft Corporation.

IBM, DB2, DB2 Universal Database, OS/2, Parallel Sysplex, MVS/ESA, AIX, S/390, AS/400, OS/390, OS/400, iSeries, pSeries, xSeries, zSeries, z/OS, AFP, Intelligent Miner, WebSphere, Netfinity, Tivoli, Informix, i5/OS, POWER, POWER5, OpenPower and PowerPC are trademarks or registered trademarks of IBM Corporation.

Adobe, the Adobe logo, Acrobat, PostScript, and Reader are either trademarks or registered trademarks of Adobe Systems Incorporated in the United States and/or other countries.

Oracle is a registered trademark of Oracle Corporation.

UNIX, X/Open, OSF/1, and Motif are registered trademarks of the Open Group.

Citrix, ICA, Program Neighborhood, MetaFrame, WinFrame, VideoFrame, and MultiWin are trademarks or registered trademarks of Citrix Systems, Inc.

HTML, XML, XHTML and W3C are trademarks or registered trademarks of W3C®, World Wide Web Consortium, Massachusetts Institute of Technology.

Java is a registered trademark of Sun Microsystems, Inc.

JavaScript is a registered trademark of Sun Microsystems, Inc., used under license for technology invented and implemented by Netscape.

MaxDB is a trademark of MySQL AB, Sweden.

SAP, R/3, mySAP, mySAP.com, xApps, xApp, SAP NetWeaver, and other SAP products and services mentioned herein as well as their respective logos are trademarks or registered trademarks of SAP AG in Germany and in several other countries all over the world. All other product and service names mentioned are the trademarks of their respective companies. Data contained in this document serves informational purposes only. National product specifications may vary.

These materials are subject to change without notice. These materials are provided by SAP AG and its affiliated companies (“SAP Group”) for informational purposes only, without representation or warranty of any kind, and SAP Group shall not be liable for errors or omissions with respect to the materials.

The only warranties for SAP Group products and services are those that are set forth in the express warranty statements accompanying such products and services, if any. Nothing herein should be construed as constituting an additional warranty.

These materials are provided “as is” without a warranty of any kind, either express or implied, including but not limited to, the implied warranties of merchantability, fitness for a particular purpose, or non-infringement.

SAP shall not be liable for damages of any kind including without limitation direct, special, indirect, or consequential damages that may result from the use of these materials.

SAP does not warrant the accuracy or completeness of the information, text, graphics, links or other items contained within these materials. SAP has no control over the information that you may access through the use of hot links contained in these materials and does not endorse your use of third party web pages nor provide any warranty whatsoever relating to third party web pages.

SAP ME “How-to” Guides are intended to simplify the product implementation. While specific product features and procedures typically are explained in a practical business context, it is not implied that those features and procedures are the only approach in solving a specific business problem using SAP ME. Should you wish to receive additional information, clarification or support, please refer to SAP Consulting.

## Document History

Document Version	Description	Author
2.0	Initial version for ME 6.1	Chet Moutrie
2.1	Minor corrections (including icon to edit request parameters)	Chet Moutrie

## Table of Contents

1	Introduction.....	1
1.1	Purpose.....	1
1.2	Scope.....	1
1.3	Glossary .....	1
2	Feature Overview.....	1
2.1	Description and Applicability .....	1
2.2	Business Purposes / Functions .....	3
3	HTML Viewer Functions.....	3
3.1	View MII Content.....	3
3.2	View / Edit Request Parameters.....	4
4	Integration.....	4
4.1	Netweaver Integration.....	4
4.2	MII Integration.....	4
5	HTML Viewer Setup .....	4
5.1	External Configuration.....	4
5.1.1	Pre-requisites.....	4
5.1.2	Netweaver Setup .....	4
5.2	Maintenance Activities .....	5
5.2.1	System Configuration .....	5
6	HTML Viewer Setup and Usage Scenario / Example .....	7
7	Links to Additional Information .....	11
8	Other Reference Material.....	11
9	Overview of Changes.....	11

## 1 Introduction

### 1.1 Purpose

The SAP ME How-To-Guide for the HTML Viewer feature is intended to provide sufficient information to enable the feature to be easily configured and readily utilized to meet business needs, making use of available best practices.

### 1.2 Scope

This document covers all aspects of the HTML Viewer feature and how to set it up.

### 1.3 Glossary

ME	Manufacturing Execution – SAP manufacturing execution system for discrete manufacturing industries
MII	Manufacturing Integration and Intelligence – An SAP toolset local to the plant for integrating shop floor systems with SAP applications and for the development of custom reports using real-time data
Servlet	a Java programming language class used to extend the capabilities of servers that host applications access via a request-response programming model
UME	User Management Engine

## 2 Feature Overview

This overview provides a high level description of the SAP ME HTML Viewer feature. For more details, see [HTML Viewer Functions](#) below.

### 2.1 Description and Applicability

The HTML Viewer is an SAP ME POD plug-in that enables the viewing of an image or html page generated by a servlet. The intended use is to provide visibility of MII reports and dashboards within the context of the ME POD.

While the primary goal for the viewer is the viewing of MII generated content, the technical implementation of the viewer enables it to view any content in a supported format that is made available by a servlet, any html page that uses only fully qualified links and SAP MII (now that MII and ME run on the same server).

One of the advantages of this feature is that the login information can be set up in the destination, so the user does not have to log in to the system providing the content.

# SAP ME How-To-Guide for HTML Viewer

---

The following table identifies when and how the HTML Viewer, and the creation of an SAP ME activity, can be used to meet specific viewing and interaction requirements.

Desired Capability	Setup	Method
1. Display static image with or without refresh (polling)	Use HTML Viewer Plug-in and MII servlet; configure Destination (authentication) and POD (layout and button) as desired	HTML Viewer
2. Display static HTML page	Use HTML Viewer Plug-in and configure Destination (authentication) and POD (layout and button) as desired or Create ME activity for external URL and configure POD to display activity in popup window upon button select	HTML Viewer Or ME Activity
3. Run interactive HTML page with no external links or only fully qualified links) and without having to log in	Use HTML Viewer Plug-in and configure Destination (authentication) and POD (layout and button) as desired	HTML Viewer
4. Run MII in ME POD panel w/o having to log in	Use HTML Viewer Plug-in with No Authentication and configure POD to display the plug-in in a popup window on button select or as default plug-in in a fixed panel	HTML Viewer
5. Run MII in ME POD popup window w/o having to log in to MII	Use HTML Viewer Plug-in with No Authentication and configure POD to display the plug-in in a popup window upon button select Or Create ME activity for external URL and configure POD to display activity in popup window upon button select	HTML Viewer Or ME Activity
6. Run interactive HTML page with no external links or only fully qualified links)	Use HTML Viewer Plug-in and configure Destination (authentication) and POD (layout and button) as desired or Create ME activity for external URL and configure POD to display activity in popup window upon button select	HTML Viewer Or ME Activity
7. Run MII Project or Report w/o having to log in to MII	Use HTML Viewer Plug-in and configure Destination (authentication) and POD (layout and button) as desired or Create ME activity for external URL and configure POD to display activity in popup window upon button select	HTML Viewer Or ME Activity
8. Run external web app in ME POD popup window	Create ME activity for external URL and configure POD to display activity in popup window upon button select	ME Activity
9. Run external web app in ME POD in a panel	Currently not available	
10. Run interactive HTML page with not fully qualified external links	Same as external web app – see 8 and 9 above	See 8 and 9

## 2.2 Business Purposes / Functions

The SAP ME HTML Viewer feature provides access to graphics images and html content generated by MII and made available through the use of a standard interface. It does this through integration with SAP NetWeaver in order to leverage the standard UME features and functions that the platform provides. Configuration of the viewer is performed in SAP Netweaver and in SAP ME. As indicated above, it can be used to view content made available by any servlet that is integrated with the NetWeaver UME, and any html page that uses only fully qualified links.

## 3 HTML Viewer Functions

### 3.1 View MII Content

The HTML Viewer is a plug-in activity that should be configured on a primary button in a POD. The viewer is activated by selecting the button in the POD. It is not necessary to establish any specific conditions (i.e. make any other selections) prior to selecting the button for the viewer. Only static data, defined in an activity rule for the viewer activity, is passed to the Servlet. The Destination contains the URL and proper authentication required to make the connection.

The content from the Servlet is delivered as one of the following types:

- text/html
- image/gif
- image/png
- image/jpeg

The content can be displayed in a pop-up window, or in a panel in the POD as shown in the following screenshot.

The screenshot displays the SAP ME Production Operator Dashboard for Site - ANT, User - SITE\_ADMIN. The dashboard includes a POD Selection section with fields for Operation, Resource, and SFC, and a row of action buttons: Start, Complete, Sign Off, Work Instruction, Assemble, DC Collect, Log NC, NC Tree, Tool List, Activities..., Reports..., and MII Report. Below this is a POD Work List table with columns for SFC, Material, Qty, Prio..., Operation Start, Shop Order, Status, and Complete Pending. The Reports section features a Chart Designer showing a grouped bar chart with 8 categories on the x-axis and 5 data series (Series1 to Series5) on the y-axis. The y-axis ranges from 0 to 100. A Close button is located at the bottom of the chart area.

## 3.2 View / Edit Request Parameters

When an image is being viewed in the HTML Viewer, the user can click on the icon at the right end of the header for the plug-in to obtain a pop-up dialog containing a list of the SAP ME request parameters sent to the MII Servlet via the destination URL (see REQUEST\_PARAMETERS in [Activity Maintenance](#) below).

The parameter values in the pop-up dialog can be edited by the user. This will cause the URL to be updated and the viewer contents to be updated based upon the new value(s) sent to the MII Servlet. If a Polling Period has been defined, the timer will be re-initialized and the contents will be refreshed at the next polling cycle. If a Polling Period has not been defined, an immediate refresh of the viewer contents will occur.

## 4 Integration

### 4.1 Netweaver Integration

The viewer obtains the content by making an http request to a Servlet using a URL defined as a Destination in Netweaver. This is done for security purposes, including the hiding of the authentication information.

### 4.2 MII Integration

The Netweaver Destination contains the URL and proper authentication required to make the connection to the servlet.

## 5 HTML Viewer Setup

### 5.1 External Configuration

#### 5.1.1 Pre-requisites

If using an MII servlet, both MII and Netweaver must both be already installed.

#### 5.1.2 Netweaver Setup

A Destination must be set up in Netweaver by someone with administrator privileges. The following attributes must be set up for the Destination:

- Destination Name - This value will be assigned to the optional activity rule, DESTINATION\_NAME, in Activity Maintenance in SAP ME, so it must be defined in upper case characters.
- Destination Type - This must be set to HTTP
- URL - The URL for the Servlet, or other content provider, for example:  
[http://server:50000/XMII/Runner?Transaction=project/folder1/folder2/transaction\\_name&OutputParameter=OutputString&Content-Type=image/png&Width=464&Height=260](http://server:50000/XMII/Runner?Transaction=project/folder1/folder2/transaction_name&OutputParameter=OutputString&Content-Type=image/png&Width=464&Height=260)  
The URL for the MII Servlet specifies the content type and the width and height of the image to be displayed. The Transaction portion of the URL depends upon how you set up MII and the transaction in MII. Please refer to the MII Guides and Help for more information. For an HTML page, or an image, a simple URL can be used.



- Authentication - The type of authentication to be used, for example: Basic (User ID and Password)
  - Authentication parameters - Depends upon authentication type selected. For example, for Basic authentication the following parameters are required:
    - User Name
    - Password
- Please refer to the NetWeaver Security Guide and Help for more information.

## 5.2 Maintenance Activities

### 5.2.1 System Configuration

#### 5.2.1.1 Activity Maintenance

##### 5.2.1.1.1 Purpose / Effects

Activity Maintenance is used to set up the HTML Viewer activity in SAP ME. This activity will be assigned to a button in POD maintenance.

##### 5.2.1.1.2 Settings / Example

On the Main tab in Activity Maintenance, add a new activity and set the following fields to the values indicated.

Activity      The name of the activity for the HTML Viewer plug-in  
Class/Program:      com.sap.me.reporting.client.impl.ReportsPlugin  
Type:      WPMF Plugin

Enter the following on the Rules tab:

PLUGIN\_URL      /COM/SAP/ME/REPORTING/CLIENT/REPORTS\_PLUGIN.JSP  
DESTINATION\_NAME      The name of the destination defined in Netweaver

The Rules tab can also be used to set the following optional rules:

TITLE      The title for the plugin. The default is REPORTS.title.TEXT.  
REQUEST\_PARAMETERS      If used, the parameters will be added to the destination URL (e.g. PARAM1=VALUE1&PARAM2=VALUE2&PARAM3=VALUE3).  
POLLING\_PERIOD      The number of seconds between automatic requests to update the content in the HTML Viewer. If not defined, or if the value is less than or equal to zero, polling (refresh of the viewer contents) will not be performed.  
RESPONSE\_TYPE      The type of content that will be provided by the servlet.  
IMAGE (default) is used if the content will be a .png, .gif or .jpg image  
HTML is used if the content will be an HTML page

## 5.2.1.2 POD Maintenance

### 5.2.1.2.1 Purpose / Effects

For the viewer, POD Maintenance is used to set up the primary POD button that will be used to invoke the viewer.

### 5.2.1.2.2 Settings / Example

After retrieving the POD that will be used, a new button should be added by selecting Insert New on the Buttons tab and entering data for the following fields:

- Button ID - A unique ID for the button
- Button Label - The text to be displayed on the button

Then select Insert New on the Button Details screen and select the activity defined for the HTML Viewer.

The activity defined for the HTML Viewer must also be assigned to a panel in the POD or to a popup window. This can be accomplished on the Layout tab.

## 5.2.1.3 User Group Maintenance

### 5.2.1.3.1 Purpose / Effects

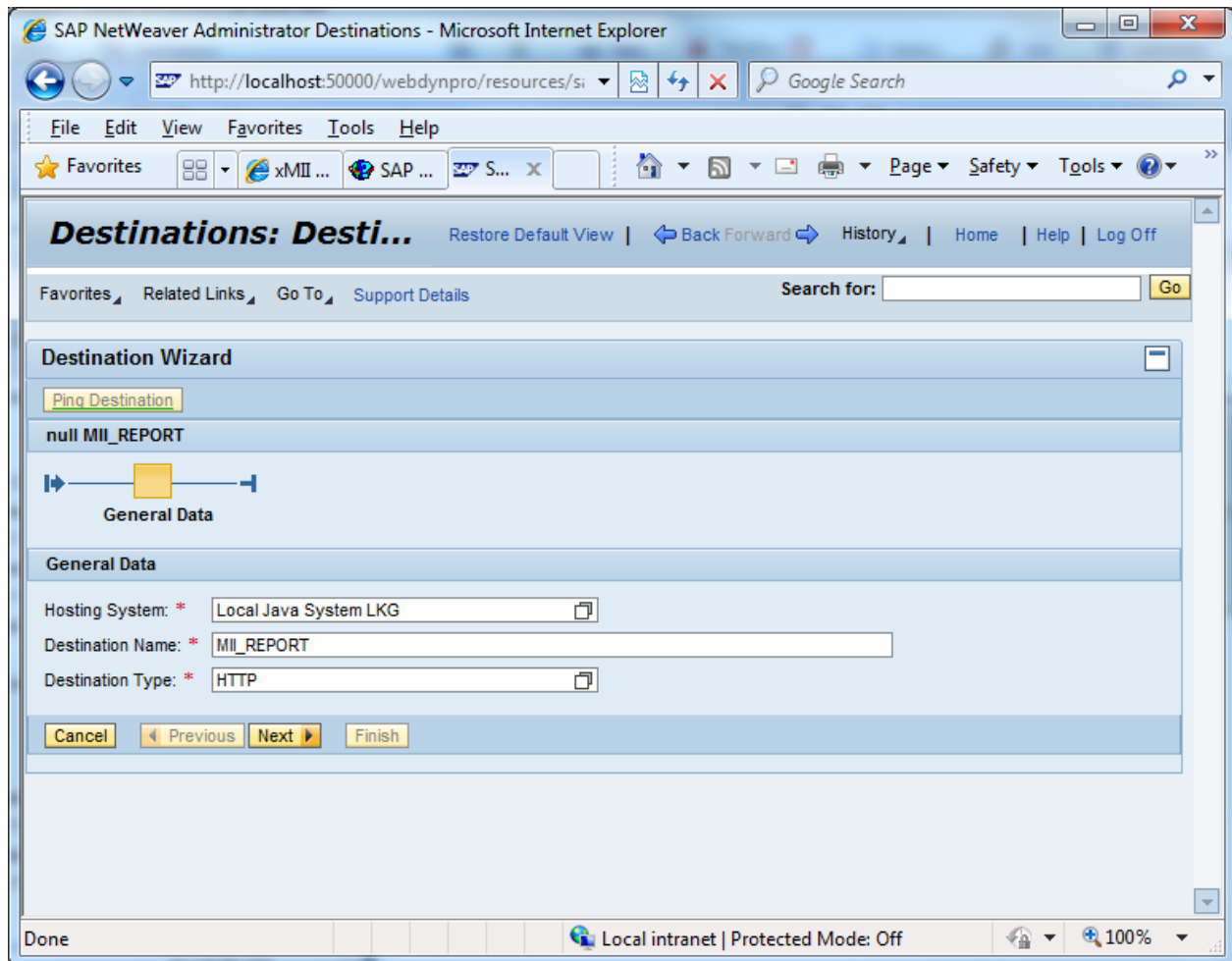
For the viewer activity added in Activity Maintenance, all user groups who will use the viewer must be given permission to that activity.

### 5.2.1.3.2 Settings / Example

For each user group who will use the viewer, retrieve the user group and enable permission (check the checkbox) for the viewer activity on the Permissions tab.

## 6 HTML Viewer Setup and Usage Scenario / Example

1. Logon to Netweaver Administrator (http:server:port/nwa).
2. Go to the Configuration -> Destinations view.
3. Select Create to add new Destination for MII Runner Servlet.
4. Enter a Destination Name in upper case characters (e.g. "MII\_REPORT").
5. Set the Destination Type as HTTP.

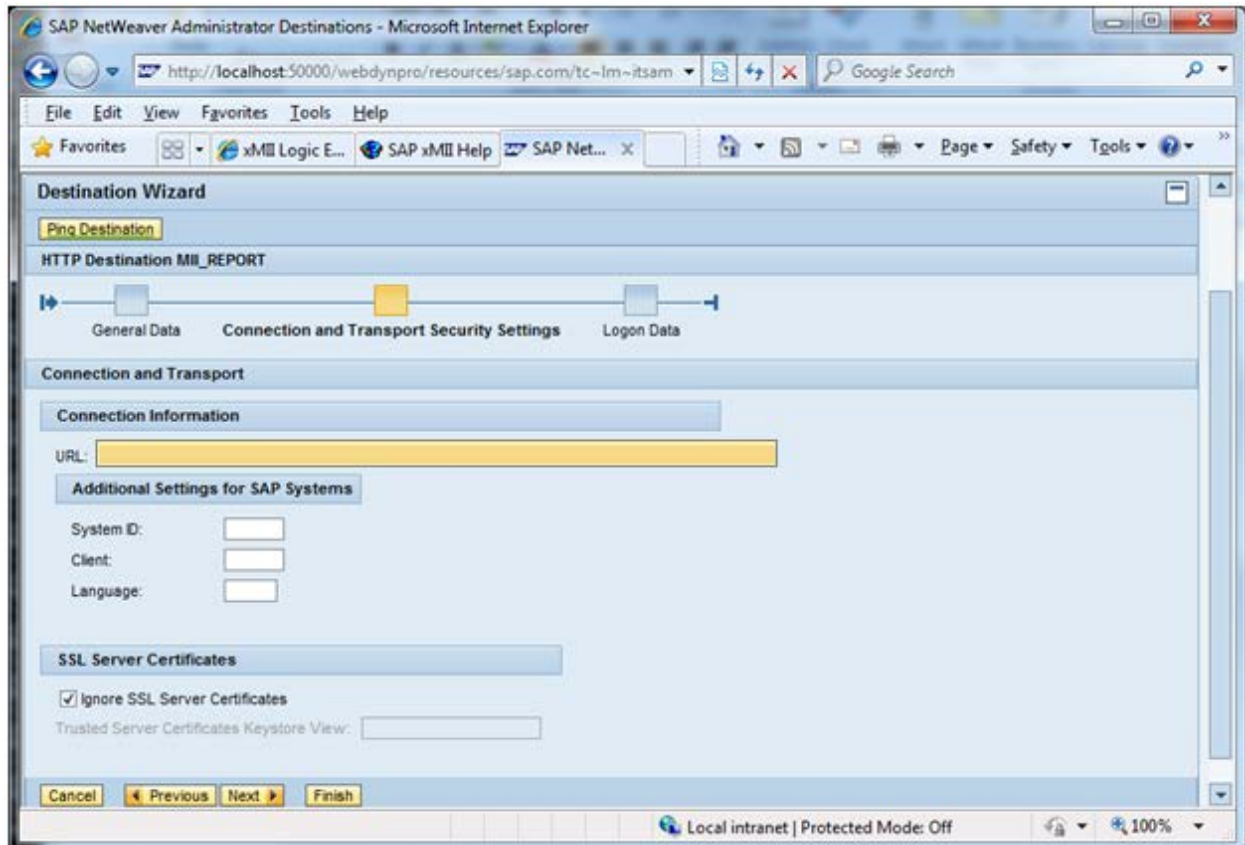


6. Select Next.

## SAP ME How-To-Guide for HTML Viewer

7. Add the URL for the MII Runner Servlet.

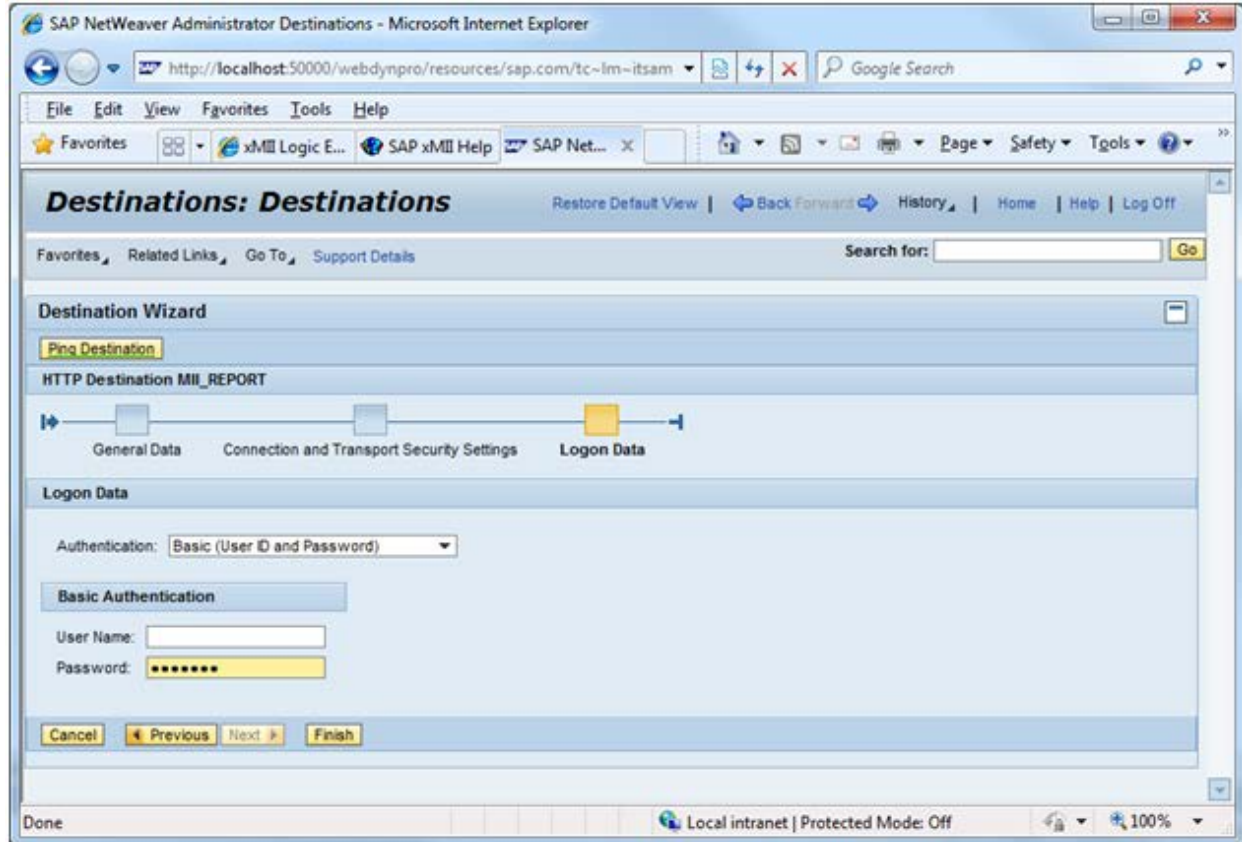
<http://server:50000/XMII/Runner?Transaction=project1/examples/transaction/reportImage&OutputParameter=OutputString&Content-Type=image/png&Width=464&Height=260>



8. Select Next.

## SAP ME How-To-Guide for HTML Viewer

9. Select Authentication information. In this example the MII server is using Basic authentication.



10. Enter user name and password.
11. Select Finish.
12. Select Ping Destination to verify it is set up correctly.
13. Login to SAP ME.
14. Enter the following on the Main tab in Activity Maintenance:

Activity:	MII_REPORT
Class/Program:	com.sap.me.reporting.client.impl.ReportsPlugin
Type:	WPMF Plugin
15. Enter the following on the Rules tab:

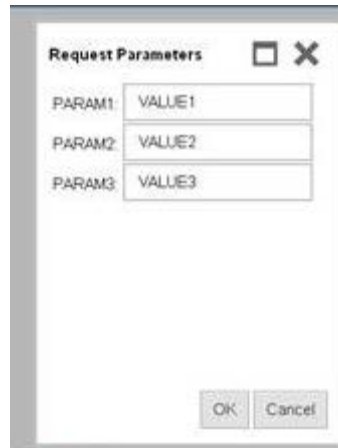
DESTINATION_NAME	MII_REPORT
PLUGIN_URL	/COM/SAP/ME/REPORTING/CLIENT/REPORTS_PLUGIN.JSP
POLLING_PERIOD	
REQUEST_PARAMETERS	PARAM1=VALUE1&PARAM2=VALUE2&PARAM3=VALUE3
RESPONSE_TYPE	IMAGE
TITLE	MII REPORT PLUG-IN

Rule	Setting
DESTINATION_NAME	MII_REPORT
PLUGIN_URL	/COM/SAP/ME/REPORTI
POLLING_PERIOD	
REQUEST_PARAMETERS	PARAM1=VALUE1&PARA
RESPONSE_TYPE	IMAGE
TITLE	MII REPORT PLUG-IN

16. Open POD Maintenance and retrieve the POD to be modified.
17. Select the Buttons tab.
18. Select Insert New.
19. Enter data for the following fields as indicated:  
 Button ID                      MII\_REPORT  
 Button Label                    MII Report
20. Select Insert New on the Button Details screen.
21. Browse for and select activity MII\_REPORT.
22. Select the Apply button.
23. Select the Layout tab.
24. Select the Other Plug-Ins icon in the Popup row.
25. Select Insert New.
26. Browse for and select activity MII\_REPORT.
27. Select the Apply button.
28. Select the Save icon.
29. Open the POD in another window.
30. Select the MII Report button.
31. A window titled REPORTS should open and display the content of an MII report.



32. Right click in the Reports window to access the Request Parameters dialog.



33. Edit a parameter value and select OK

34. The contents of the Reports window will be immediately updated based upon the edited parameter value.

## 7 Links to Additional Information

[SAP ME Guides and Help](#)

[SAP MII Guides and Help](#)

## 8 Other Reference Material

None provided.

## 9 Overview of Changes

Since SAP ME 6.1 and MII are now co-located (both run on the same server), the HTML Viewer can now run MII as well as servlets. This document has also been updated to clarify that the HTML Viewer can run HTML pages that use only fully qualified links (or no links at all).