

# SAP 3D Visual Enterprise 9.0 FP1

## New Features Overview

Vladimir Noskov  
November, 2016



# SAP 3D Visual Enterprise Viewer



# Default save format - VDS

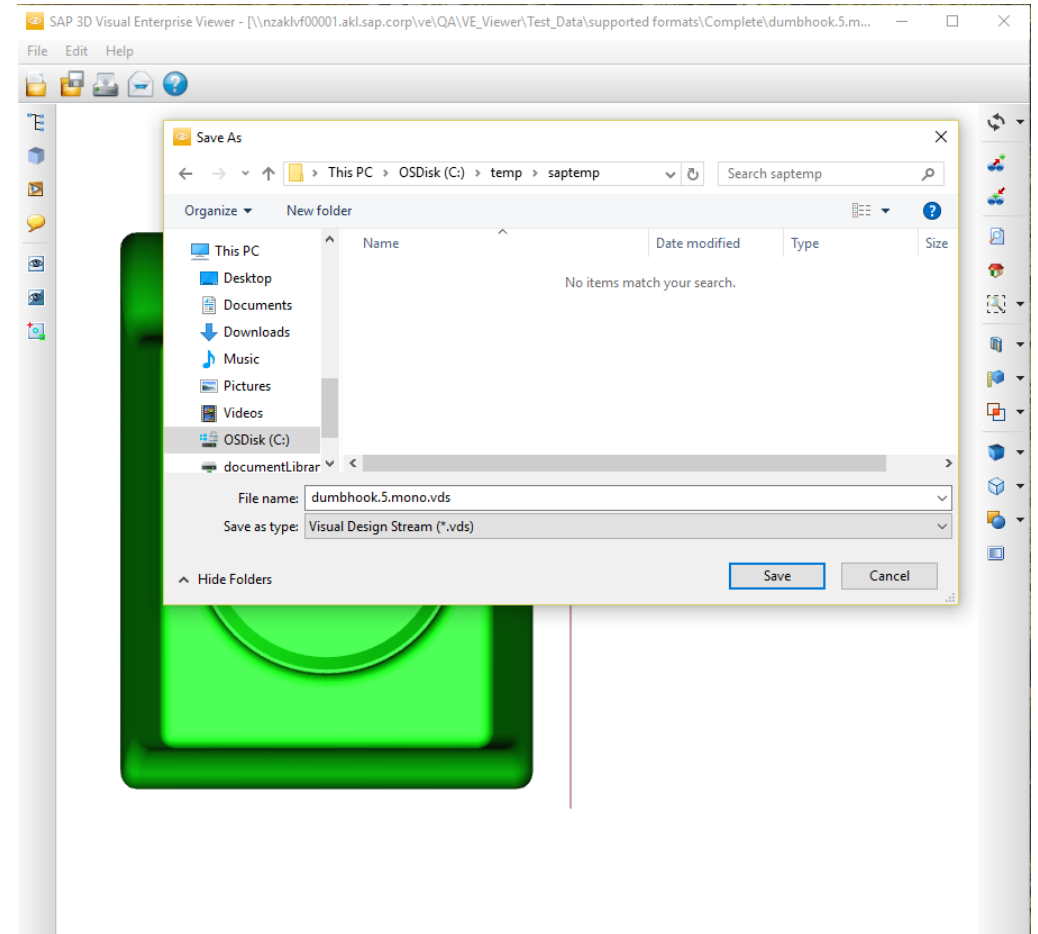
The SAP 3D Visual Enterprise Viewer default save file format is VDS.

Default export settings are used.

## Notes:

- Shattered VDS cannot be saved, only monolithic VDS
- Collaboration cannot be saved in VDS files
- CGM and PDF formats cannot be saved as VDS files
- Saving is temporarily disabled when VAN mode is enabled
- If you are working with .rh files, and wish to save to .rh, you must make changes in the registry to set the compatibility mode flag

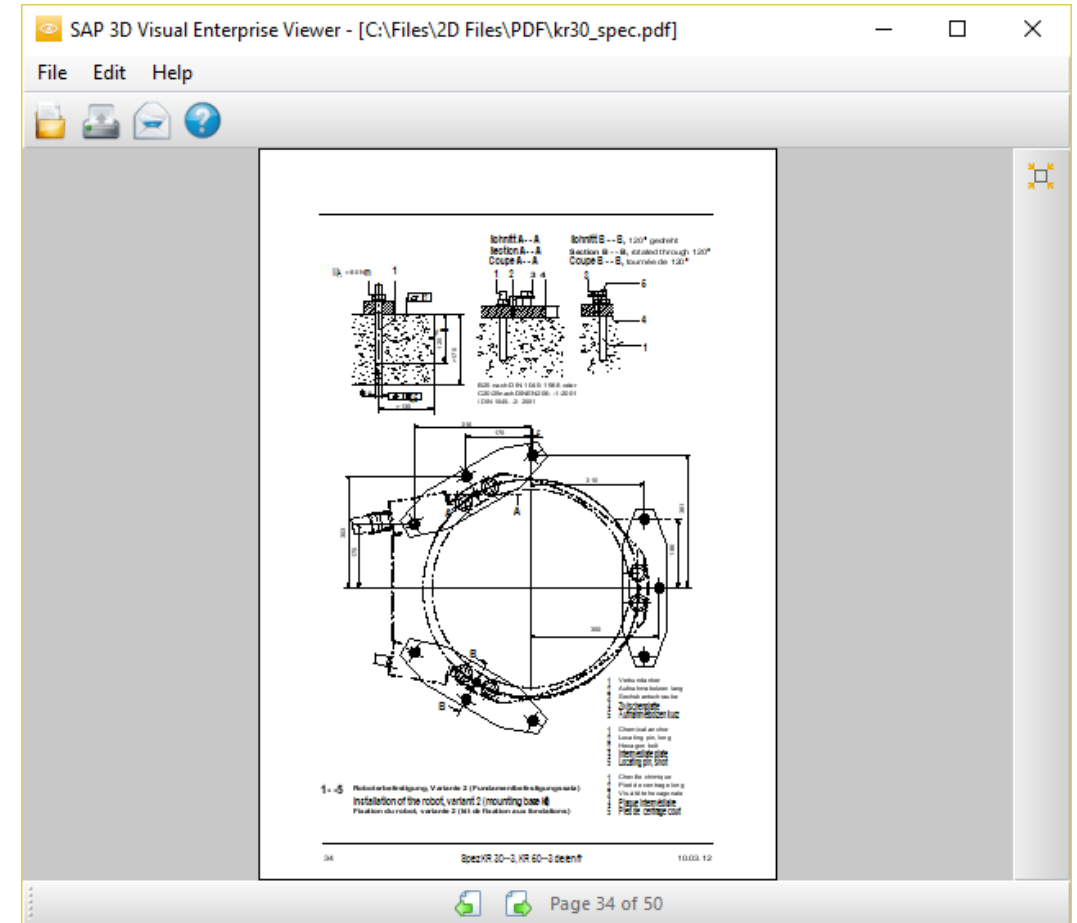
```
[HKEY_CURRENT_USER\Software\SAP\SAP 3D Visual Enterprise Viewer]  
SAVE_LEGACY_MODE "=dword:00000001"
```



# PDF View

## PDF viewing is added

The PDF/A specification is supported (no java scripts)



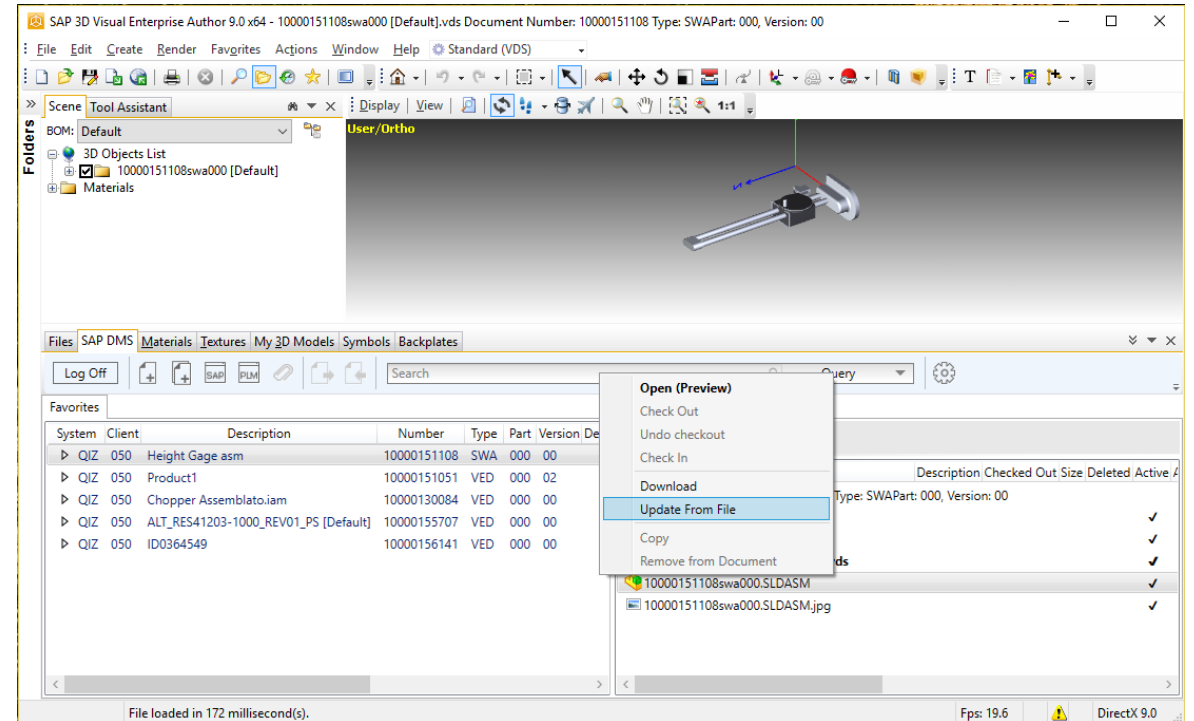
# SAP 3D Visual Enterprise Author



# DMS Integration command: Update From

**DMS Integration functionality is extended to support a new command: Update From.**

**This command allows the user to apply changes from the new version of CAD master (VDS) directly from DMS.**

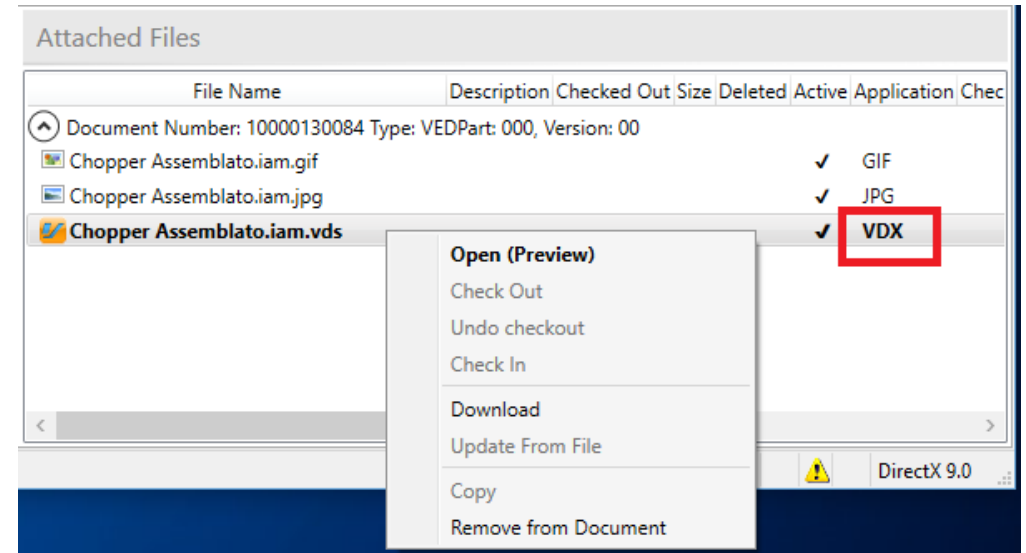


# VDS Shattered Viewing in DMS Integration

**Support for Shattered VDS Assemblies is added to the DMS Integration panel.**

**To view shattered assemblies, right-click on the original with VDX Workstation Application, and choose Open (Preview) from the Context Menu. Assembly files will download and the assembly will open in SAP 3D Visual Enterprise Author.**

**Note: SAP 3D Visual Enterprise Author can only save monolithic VDS files**

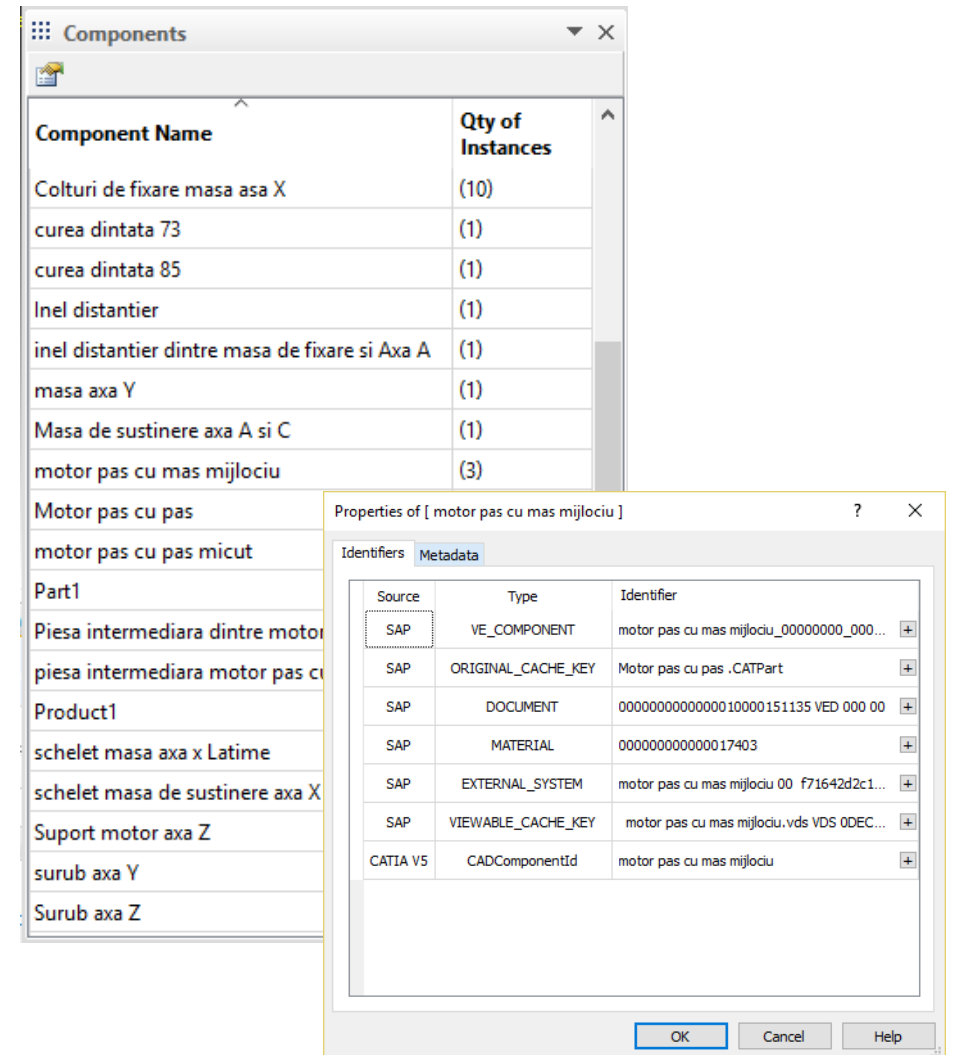


# Components Panel

The Components panel displays a list of CAD reusable components.

When a component is selected, all instances of the component are highlighted in the scene.

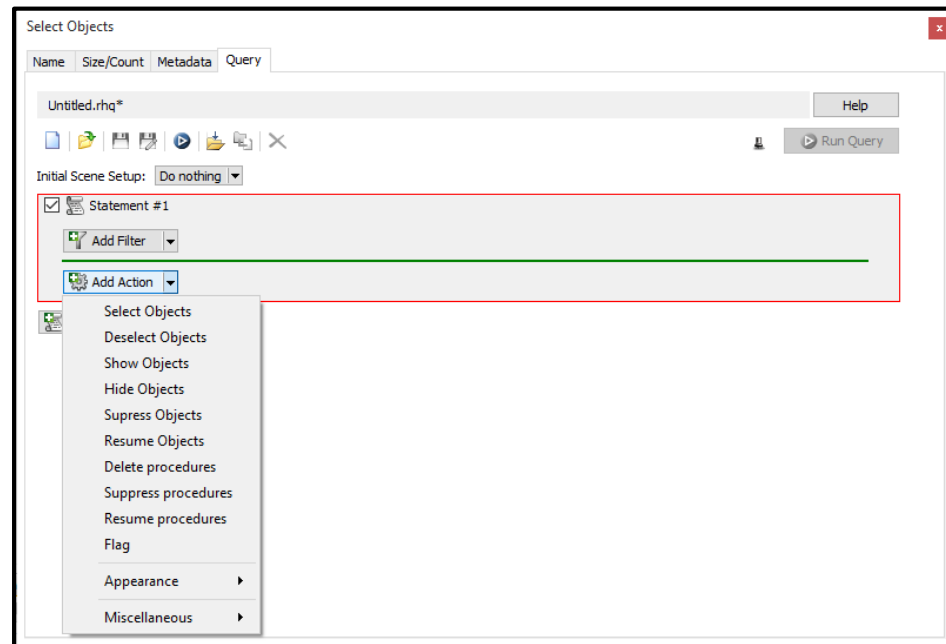
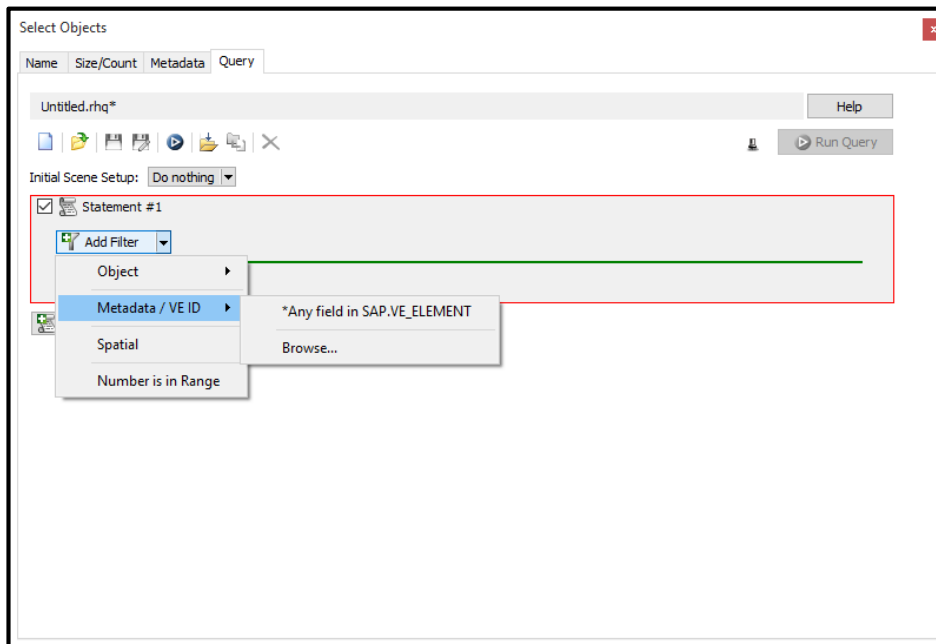
The Properties button displays component IDs and metadata.





# Query

- The Query functionality is extended to support filter by IDs
- The ability to delete and suppress Procedures is added



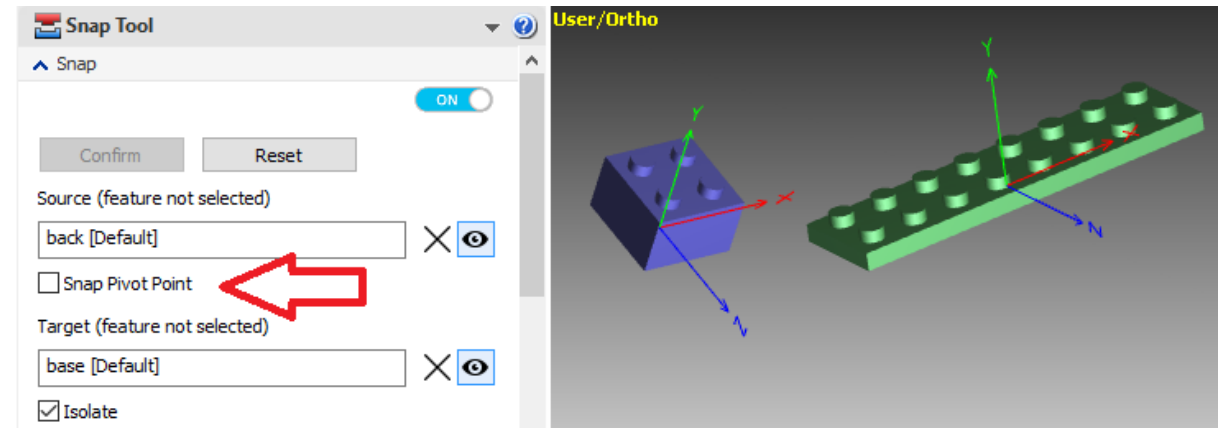
# Snap Tool

**Pivot Points Snap Mode added.**

**When this mode is enabled, the Snap Tool moves the Source Object Pivot Point position instead of changing the Source Object position.**

**Snapping in this mode is similar, but instead the pivot point moves.**

**Note: Same Source Object could be selected as a target for Pivot Point Snap.**



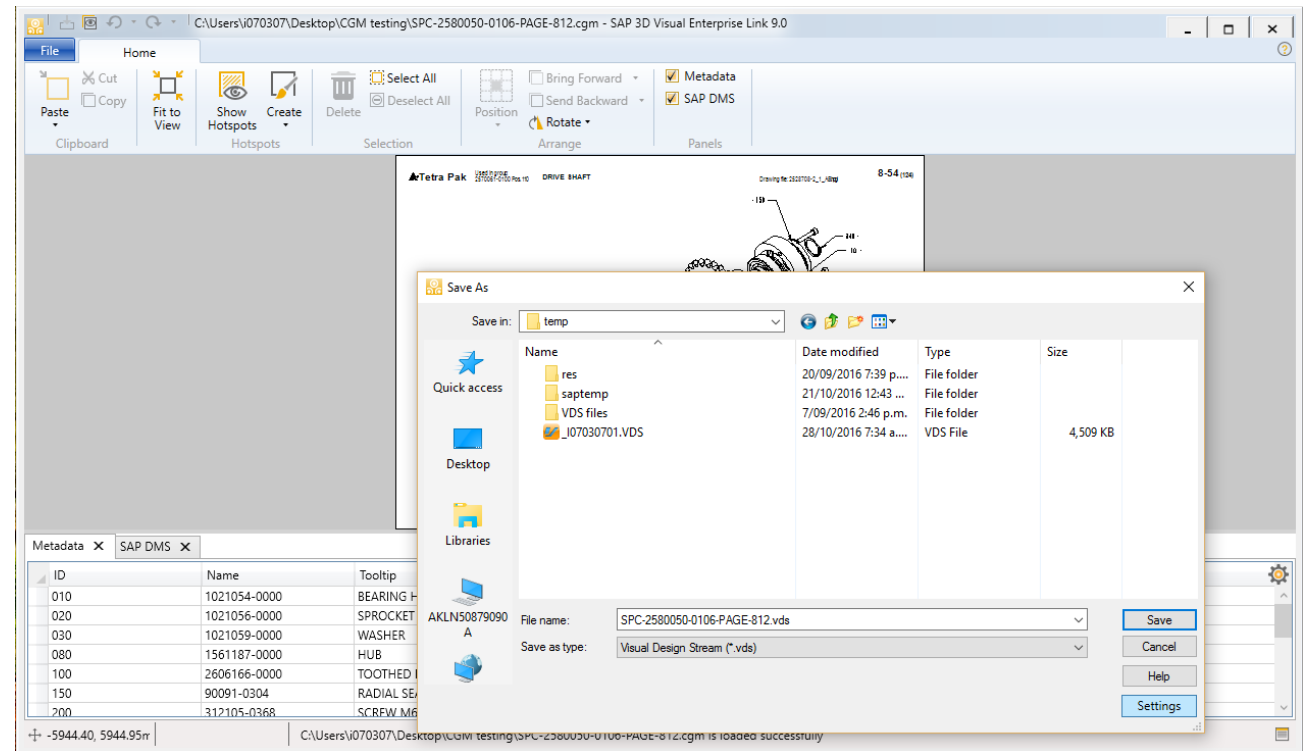
# SAP 3D Visual Enterprise Link



# VDS file Support

The SAP 3D Visual Enterprise Link functionality is now extended to export VDS files for delivery to the HTML Viewer.

Smart 2D specific data is preserved:  
Hotspots, Metadata, and Actions



# SAP 3D Visual Enterprise Generator

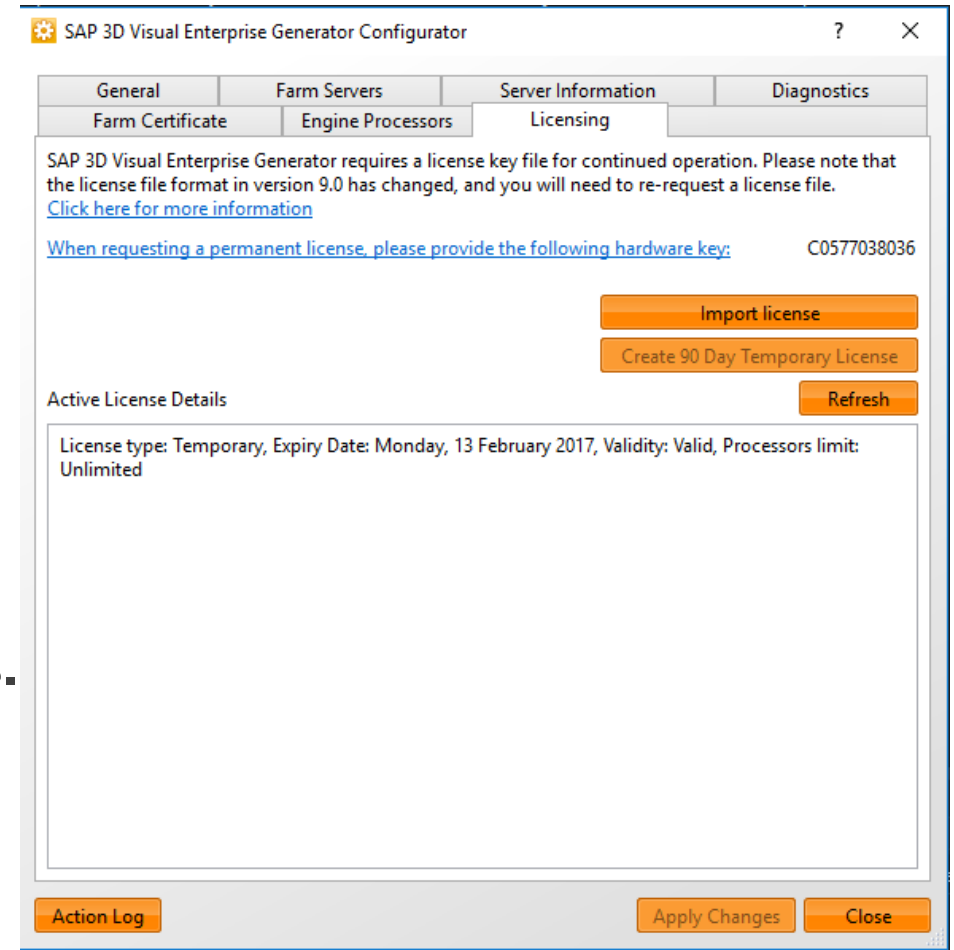


# Licensing

Product licensing has changed from classic licensing files to NetWeaver standard, as part of Product Standards Compliance.

Old license files cannot be migrated. Instead, customers can generate a new 90 day temporary license to give them time to migrate.

The migration process is documented in FAQ, new installation guide, and also mentioned in release notes. See: <https://wiki.scn.sap.com/wiki/display/SVE/FAQ+-+Upgrading+to+VEG+9.0>



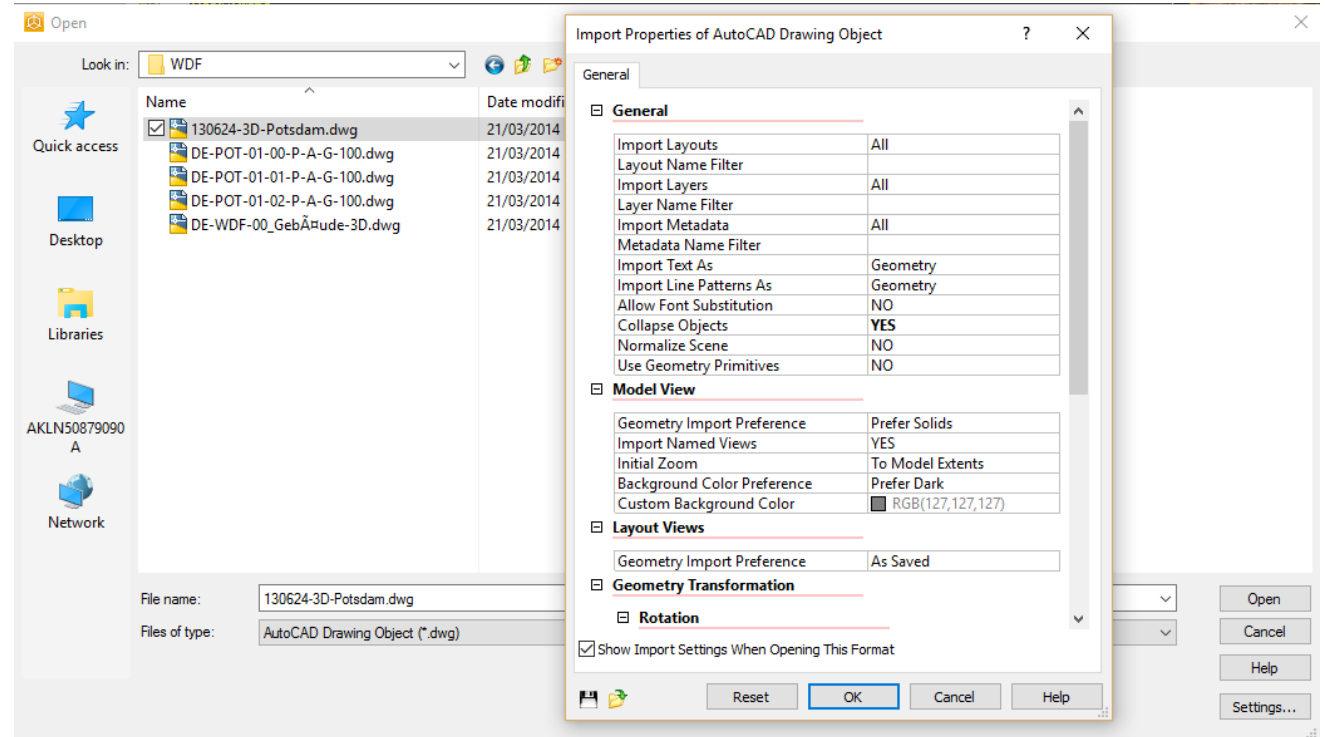
# CAD



# AutoCAD Translator

There is a new AutoCAD translator based on Matai (VDS) core for SAP 3D Visual Enterprise Author, Generator, and Viewer, which enables the following:

- Import of .dwg, .dst and .dwt files
- AutoCAD Floor Plans workflow support
- Optional collapse of graphics to produce smaller files





# Other

---

## **CAD updates & minor enhancements:**

- **CATIA V5 R26 support**
- **Inventor 2017 support**

## **XMPlant: XML dialect of ISO15926:**

- **First release of XMPlant: XML dialect of ISO15926**

## **Step linked files support:**

- **Step part 21 STEP files referencing stp, STEP formats.**
- **Step zipped STEP files referencing zipped STEP formats (\*.stp)**

**VDI workflow support for: STEP, IFC, 3DXML, XMPlant**



**Thank you**