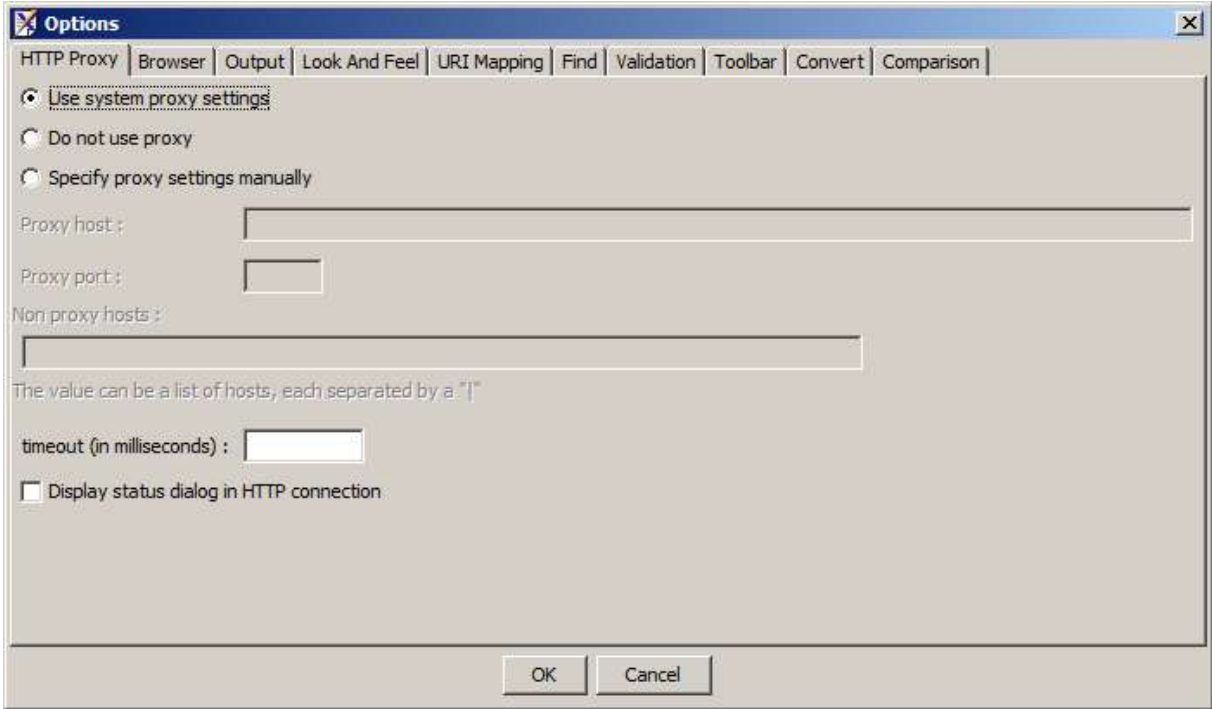
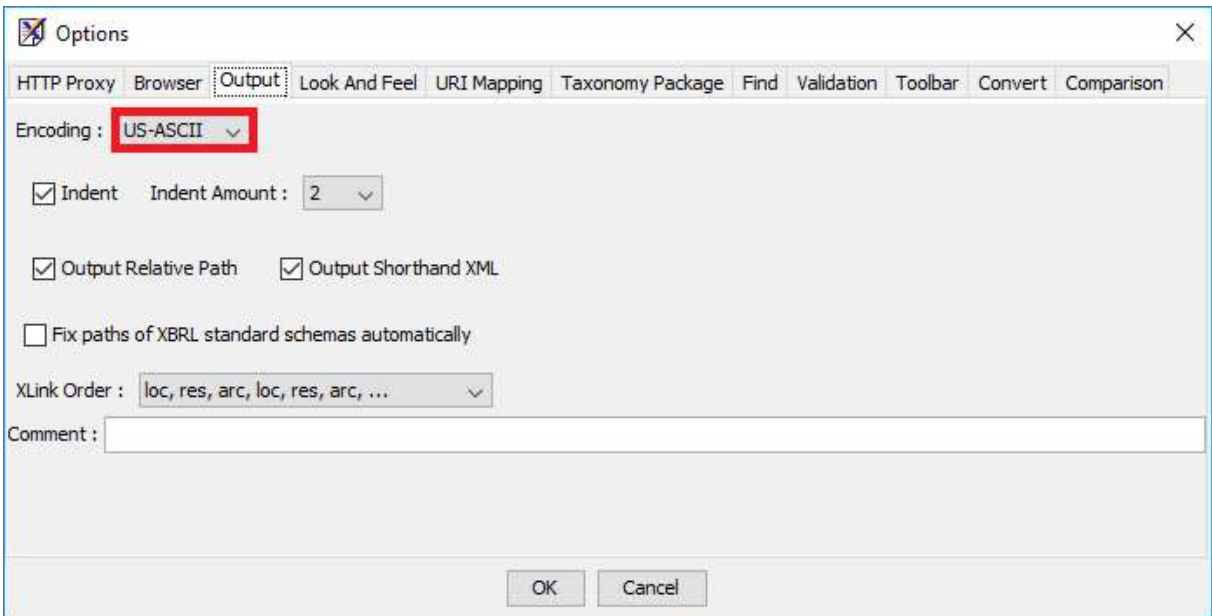


SAP Disclosure Management - Recommended Fujitsu Settings

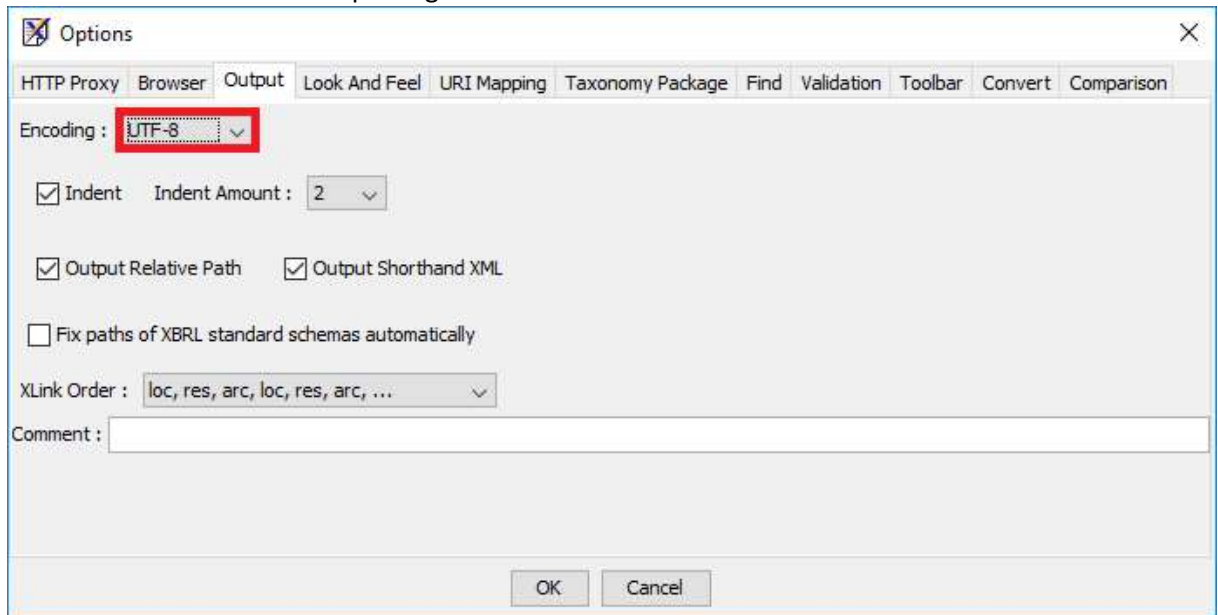
- 1) In Fujitsu Taxonomy Editor / Instance Editor, go to the menu item **Tools > Options**, then select the **HTTP Proxy** tab. Select "Use system proxy settings", so the program automatically applies the LAN settings of Internet Explorer:



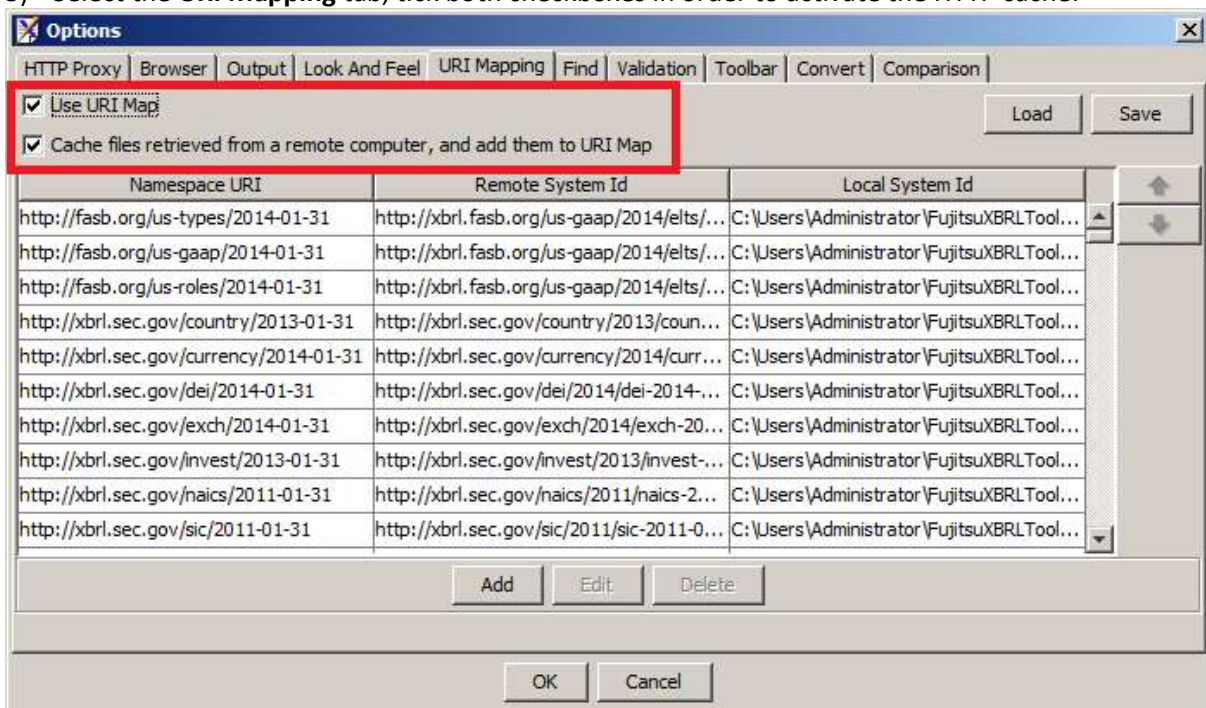
- 2) Select the **Output** tab, and select the **Encoding**:
 - Choose **US-ASCII** for US SEC reporting:



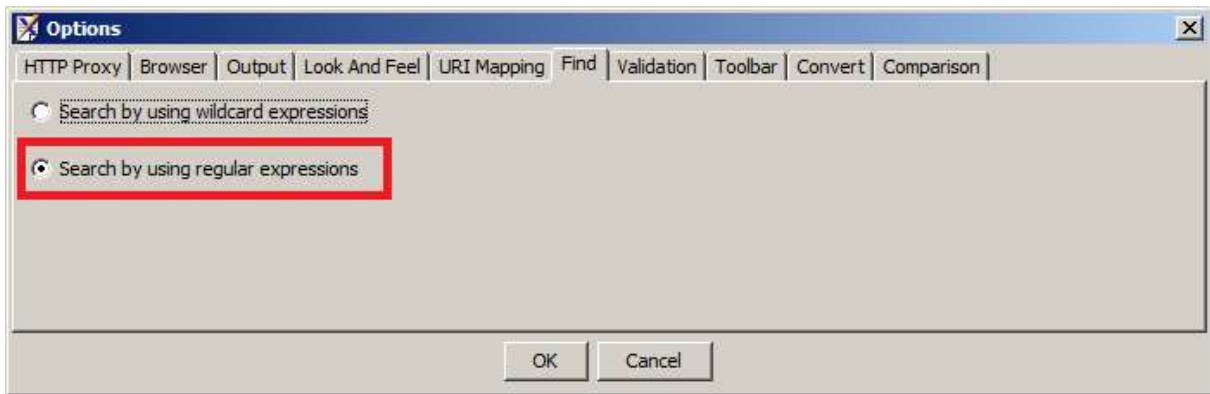
- Choose **UTF-8** for all other reporting worldwide



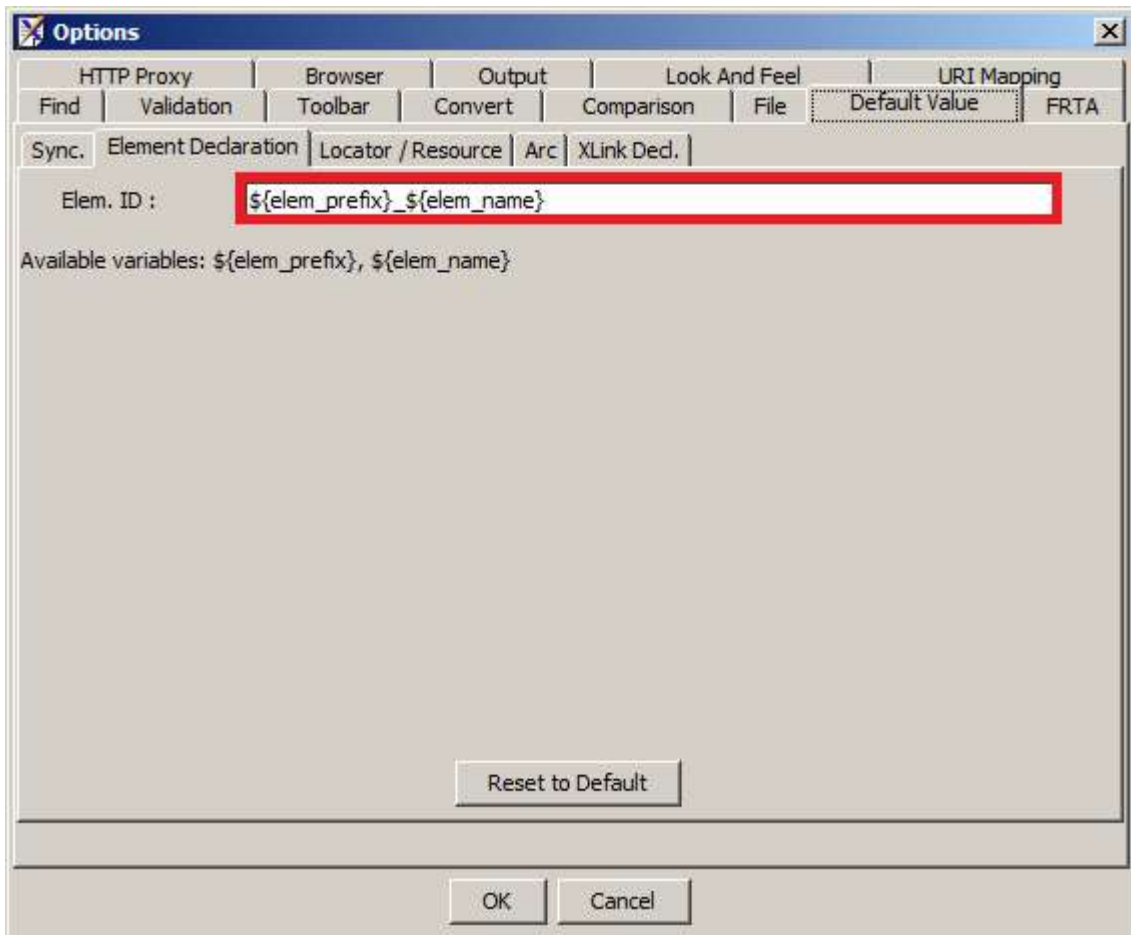
- 3) Select the **URI Mapping** tab, tick both checkboxes in order to activate the HTTP cache:



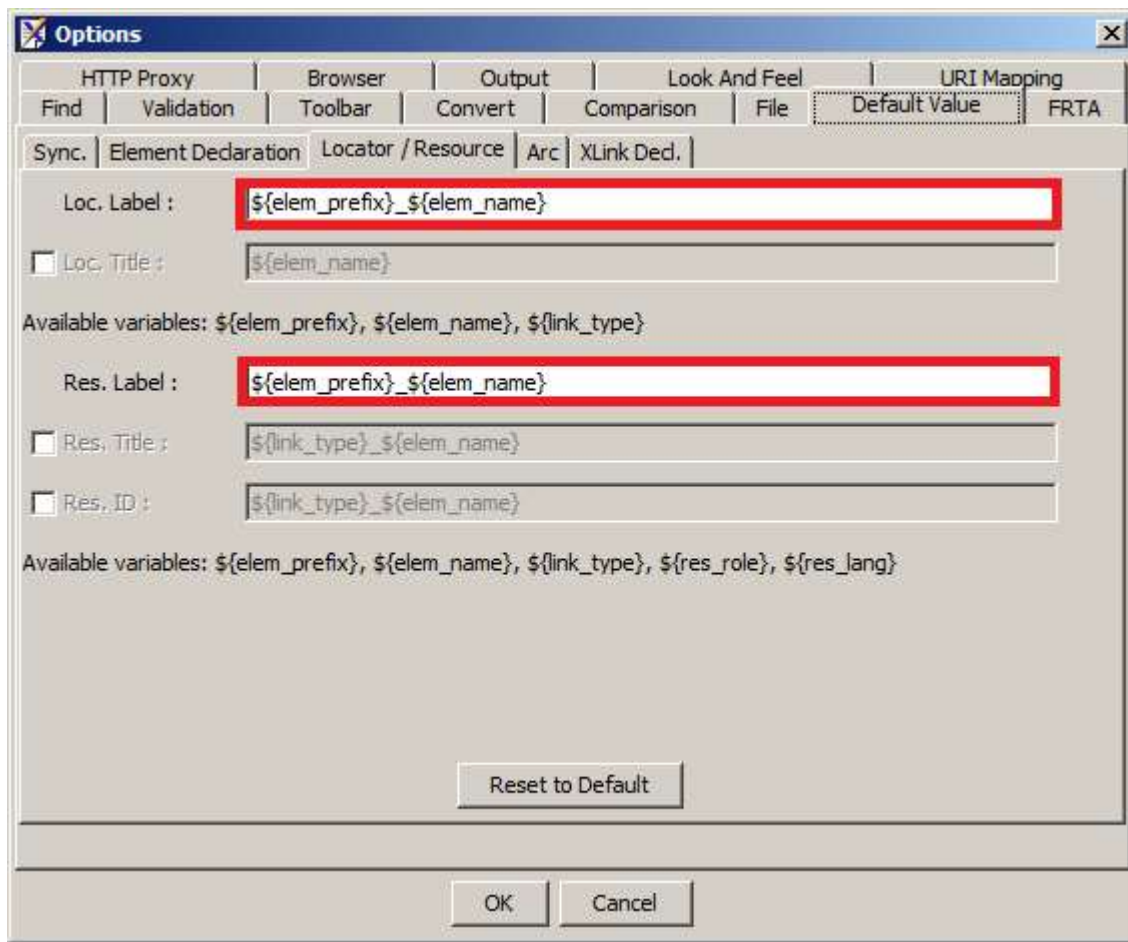
- 4) Select the Find tab, and choose preferably Search by using regular expressions. This way, you will be able to:
 - a. Search all concepts starting with a string pattern
^FirstCharactersOfTheElement
 - b. Search exact match of concept name
^FullConceptName\$



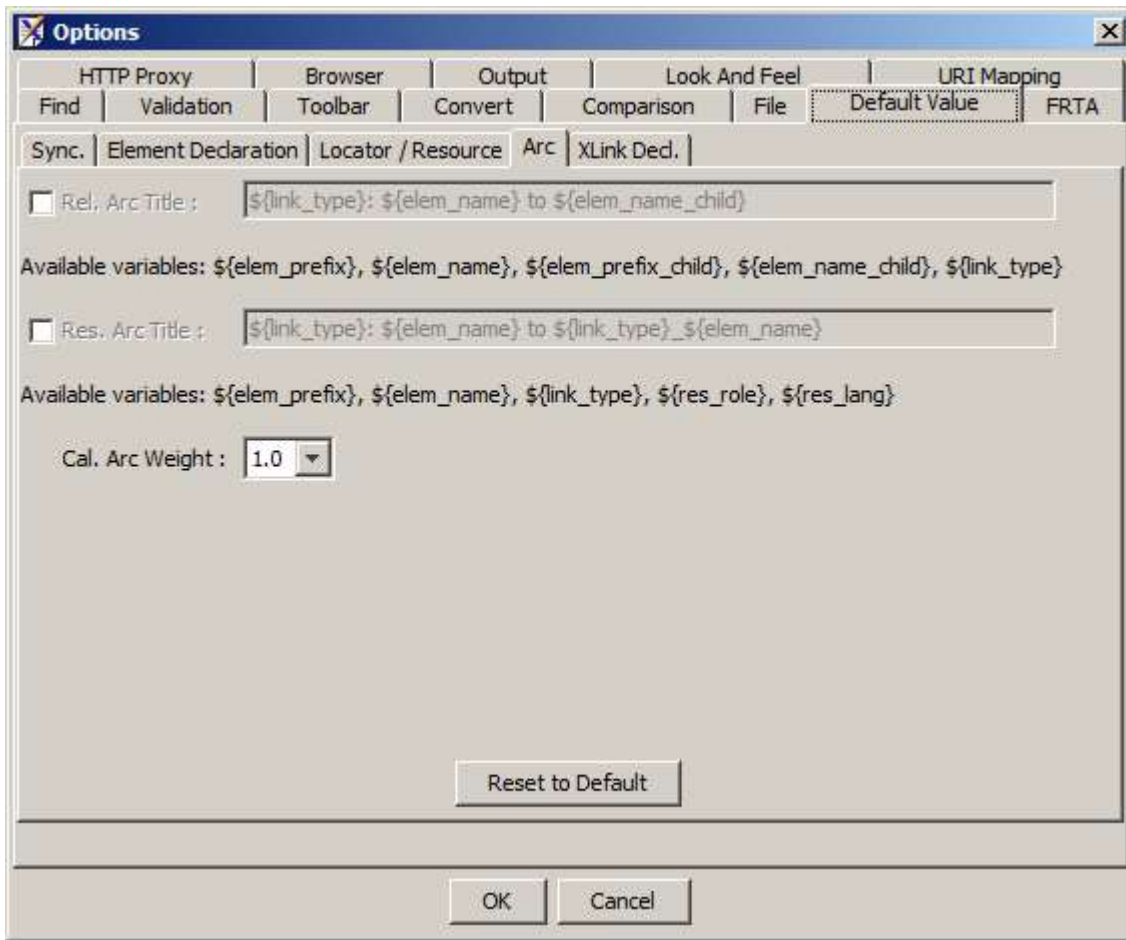
- 5) After opening XSD schema file in Taxonomy Editor, you have access to more tabs. Select the **Default Value** tab and the **Element Declaration** sub-tab: the configuration should preferably be as follows:



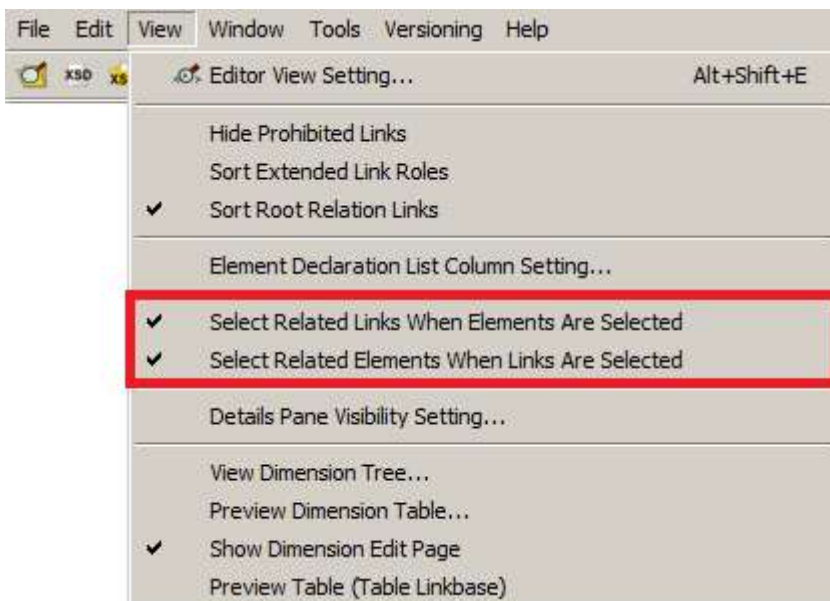
- 6) Go to the **Locator / Resource** sub-tab and apply the same settings as below:



7) In the **Arc** sub-tab, all checkboxes should be unticked:



- 8) Click **OK**.
- 9) Restart Taxonomy Editor
- 10) If you notice that dimension members cannot be tagged in old SP, simply remove them from the **Definition Link**. Then rebuild them by simply drag and drop from the **Presentation Link**.
- 11) When reviewing taxonomies only, tick the following options for better synchronization between panels:



When editing taxonomies, you may need to untick those options in order to avoid flickering when moving elements.