



## **Disclosure Management**

HANA data-source in Disclosure Management

Author: Marc Kuipers

## TABLE OF CONTENT

<b>Introduction</b> .....	<b>3</b>
<b>Prerequisites</b> .....	<b>4</b>
<b>Setup</b> .....	<b>7</b>
<b>Useful Notes</b> .....	<b>16</b>

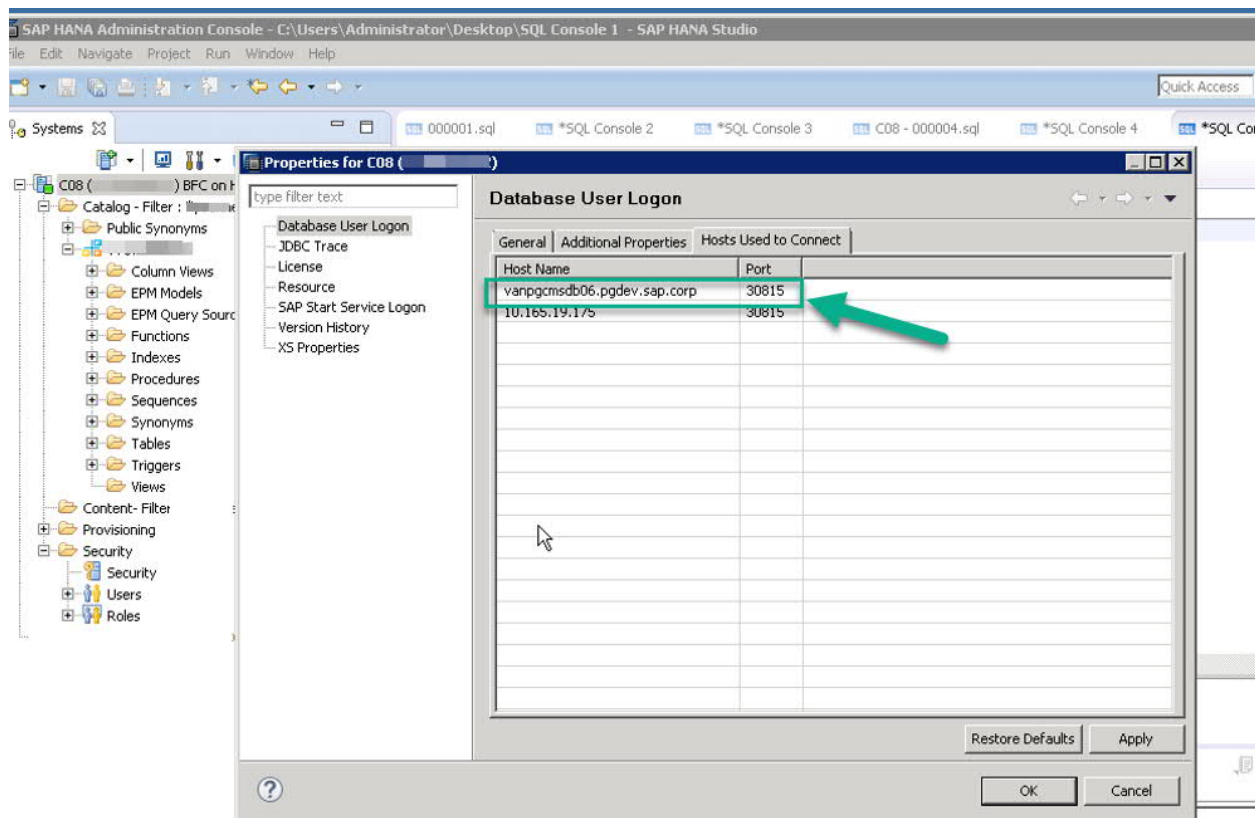
## Introduction

From Service Pack 06, SAP Disclosure Management 10.1 supports retrieving data from SQL Table Views or SQL Tables using HANA SQL Queries. This document will outline the setup and configuration needed.

## Prerequisites

### 1. HANA database

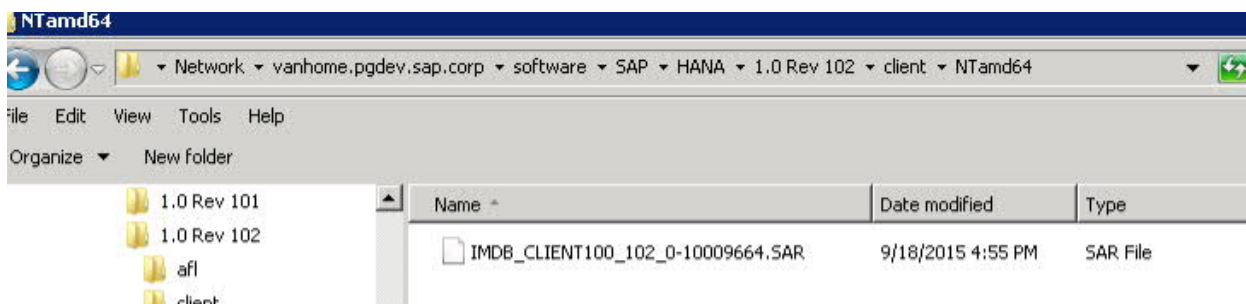
You need to have the details of the HANA server (hostname (or IP address) + Port) and a valid user/password to connect to this DB.



### 2. HANA Client

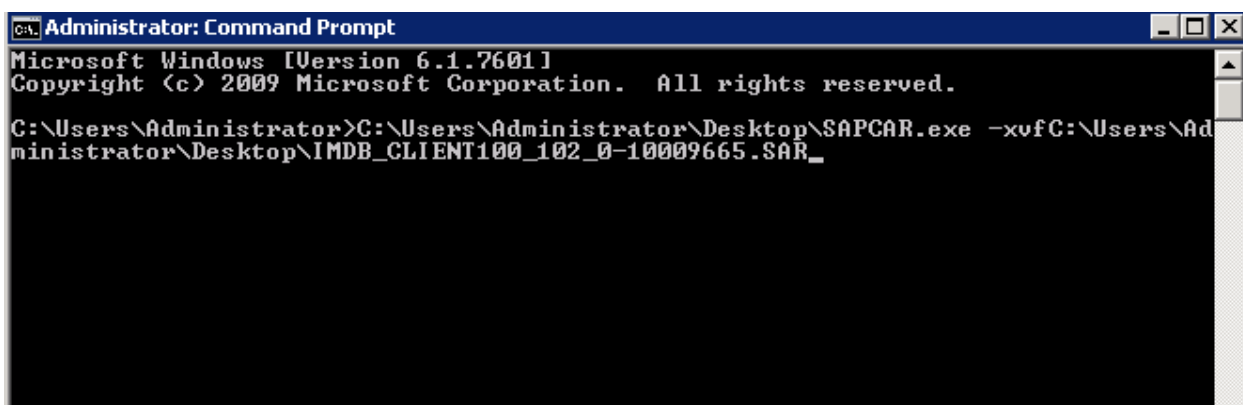
This can be downloaded from SMP  
(<https://launchpad.support.sap.com/#/softwarecenter/support/index>)

For example, download and copy the file **IMDB\_CLIENT100\_102\_0-10009664.SAR** to the client machine



To extract the .SAR file:

- > Download SAPCAR.exe and copy it to desktop
- > Open command prompt
- > Drag and drop **SAPCAR.exe** to it and type [space]-xvf then drag and drop the file **IMDB\_CLIENT100\_102\_0-10009664.SAR**



- > ENTER -> the file will be extracted at C:\Users\[current\_user]
- > Run the **hdbsetup.exe** to install the Hana client tools

Name	Date modified	Type	Size
client	9/22/2015 7:23 AM	File folder	
instruntime	9/22/2015 7:23 AM	File folder	
hdbinst.exe	9/15/2015 6:03 AM	Application	13 KB
<b>hdbsetup.exe</b>	9/15/2015 6:03 AM	Application	<b>39 KB</b>
hdbuninst.exe	9/15/2015 6:03 AM	Application	13 KB
LABEL.ASC	9/15/2015 2:01 AM	ASC File	1 KB
msvcr100.dll	9/15/2015 2:01 AM	Application extension	809 KB

### 3. DM Client (SP06 or higher)

About

---

## SAP Disclosure Management

© 2019 SAP SE or an SAP affiliate company. All rights reserved. No part of this publication may be reproduced or transmitted in any form or for any purpose without the express permission of SAP SE or an SAP affiliate company.

SAP and other SAP products and services mentioned herein as well as their respective logos are trademarks or registered trademarks of SAP SE (or an SAP affiliate company) in Germany and other countries. All other



Build Version: 10.1.1400.1

[Open Source Notices](#)

Assembly Version: 10.1.10.2

Part of DM Stack 1400

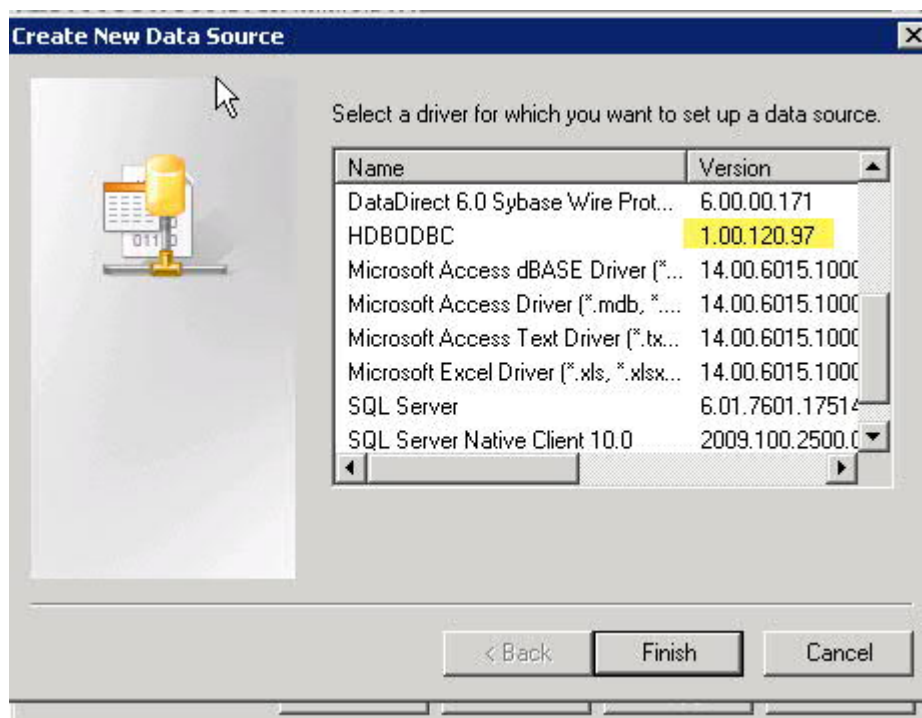


## Setup

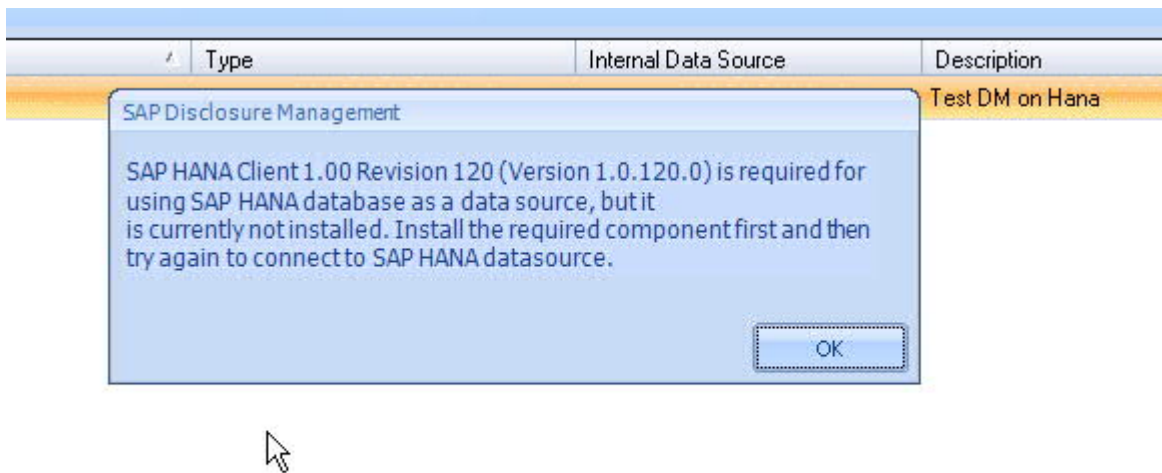
### 1. Create an ODBC data-source

Run 'odbcad32.exe' (see: <https://support.microsoft.com/en-us/help/942976/odbc-administrator-tool-displays-both-the-32-bit-and-the-64-bit-user-d>)

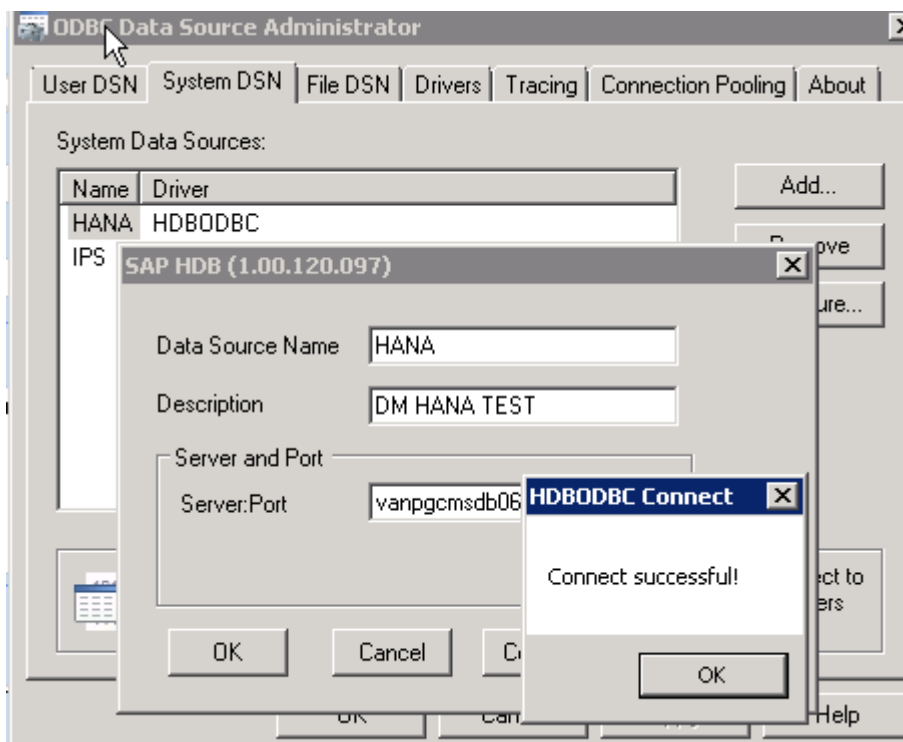
Select the HDBODBC driver



Note: this must be 1.00.120.97, otherwise you will get this error

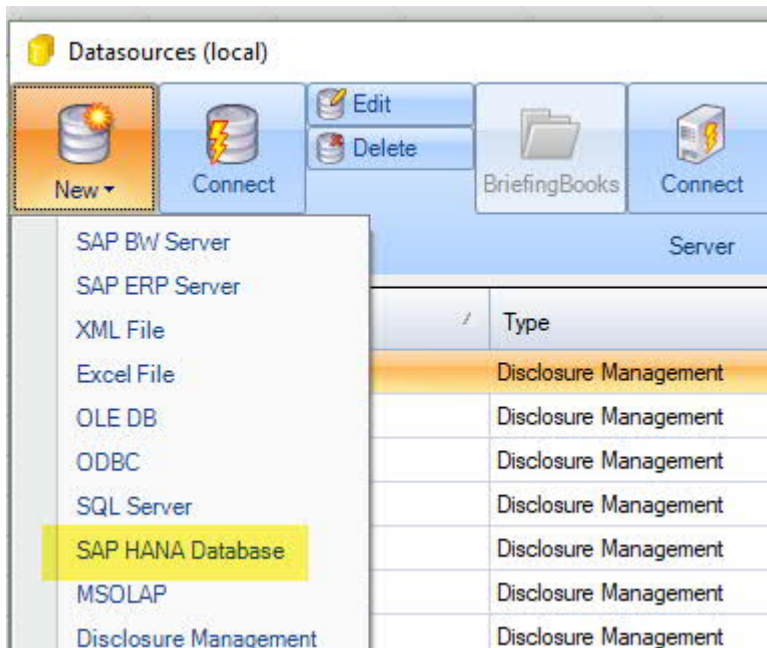


Setup the HANA ODBC source (using server + user/password) from prerequisites

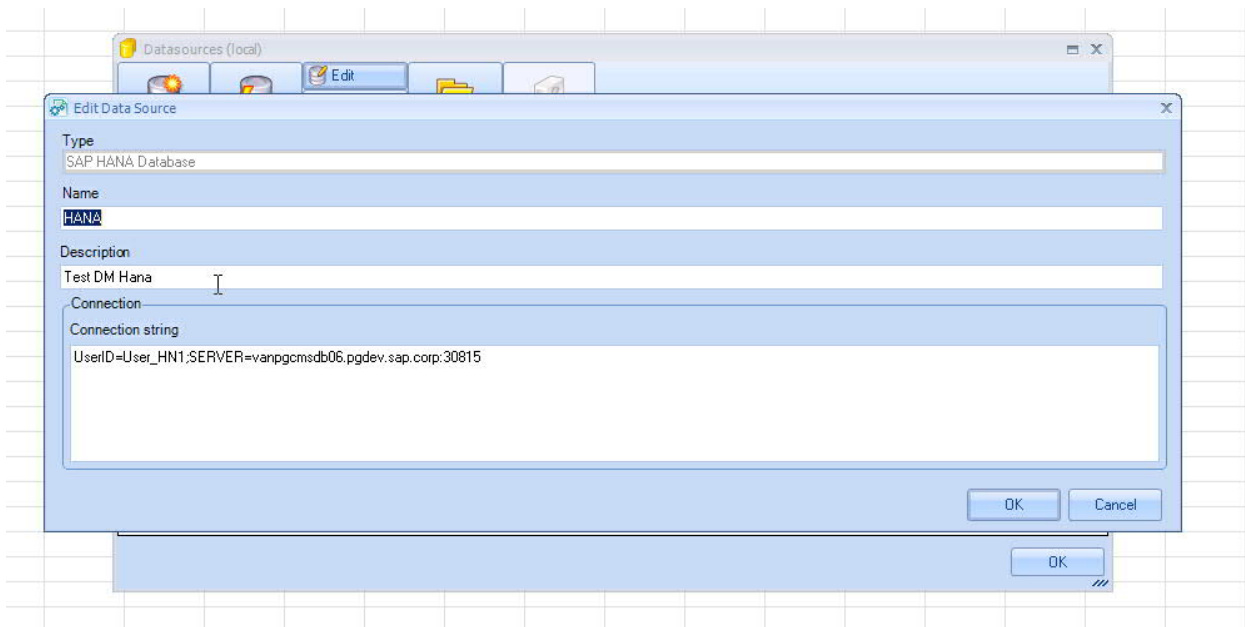




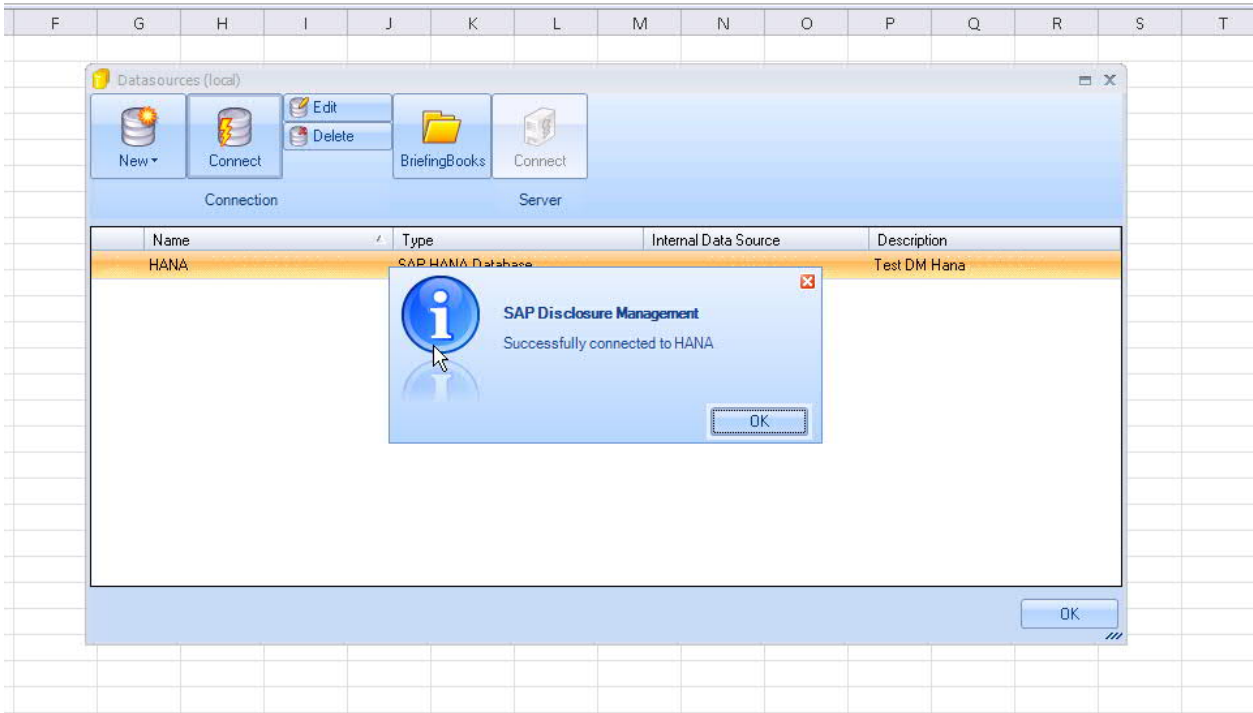
2. Create a data-source in the Disclosure Management client



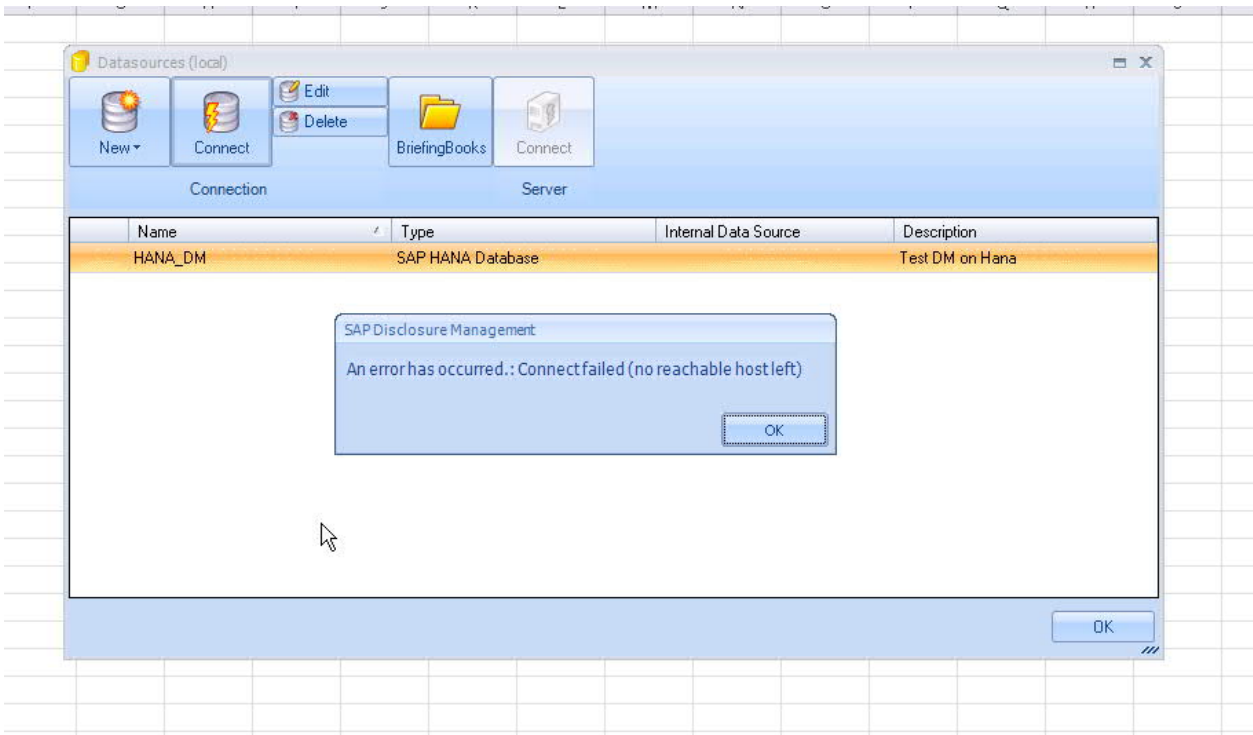
Connection string example



You can now connect to this data-source

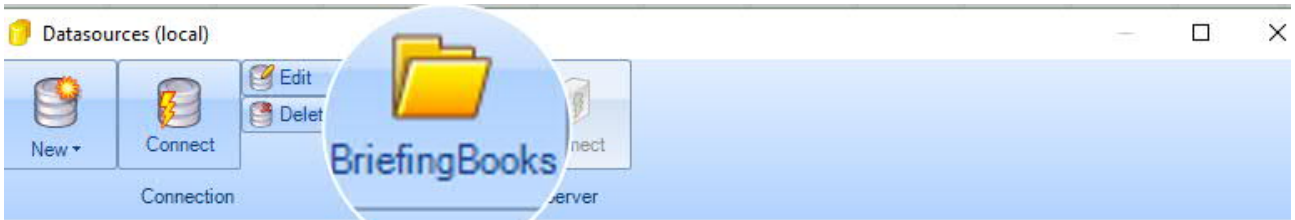


Note: if you have this error, your connection is incorrect

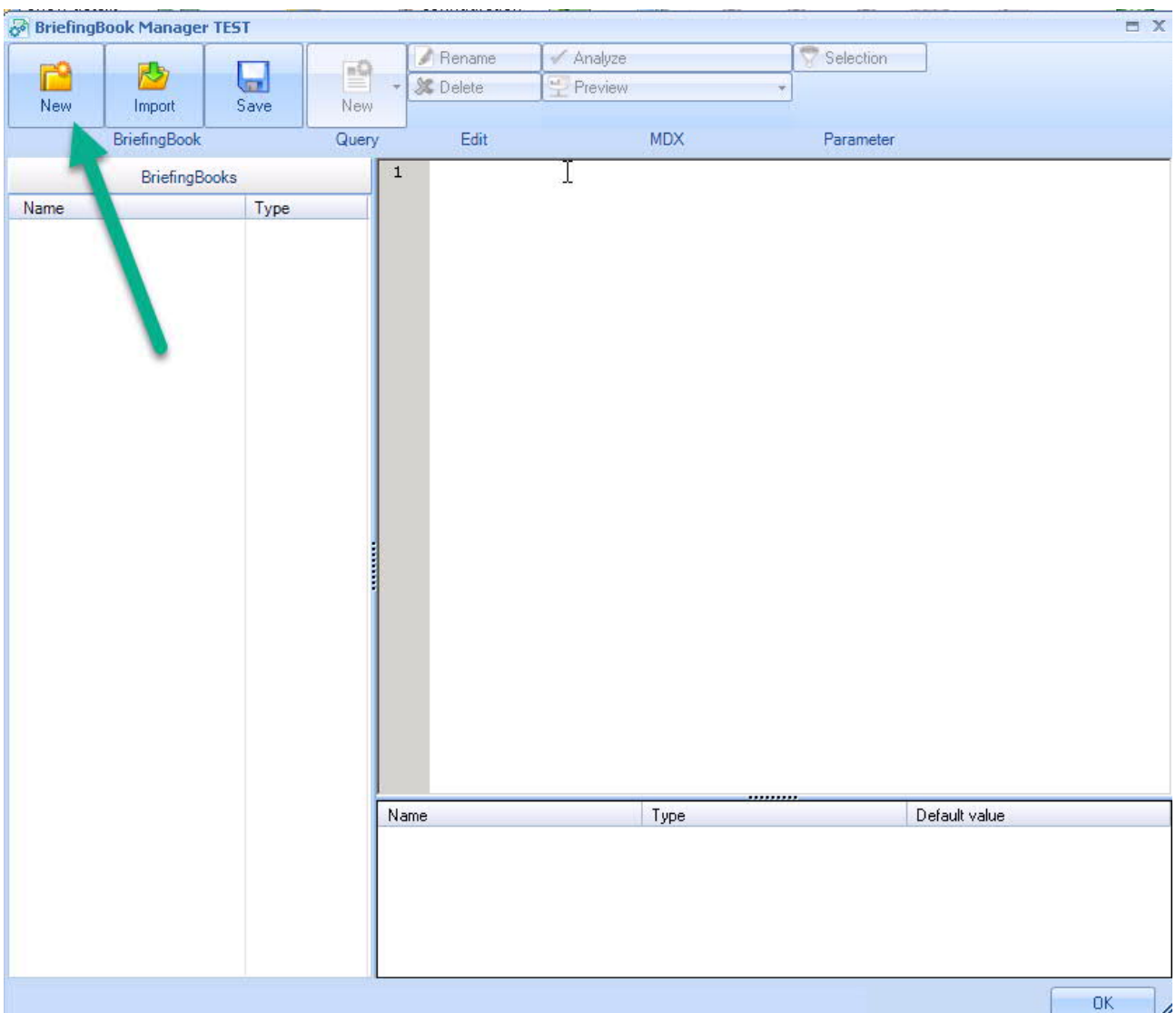


### 3. Getting the data

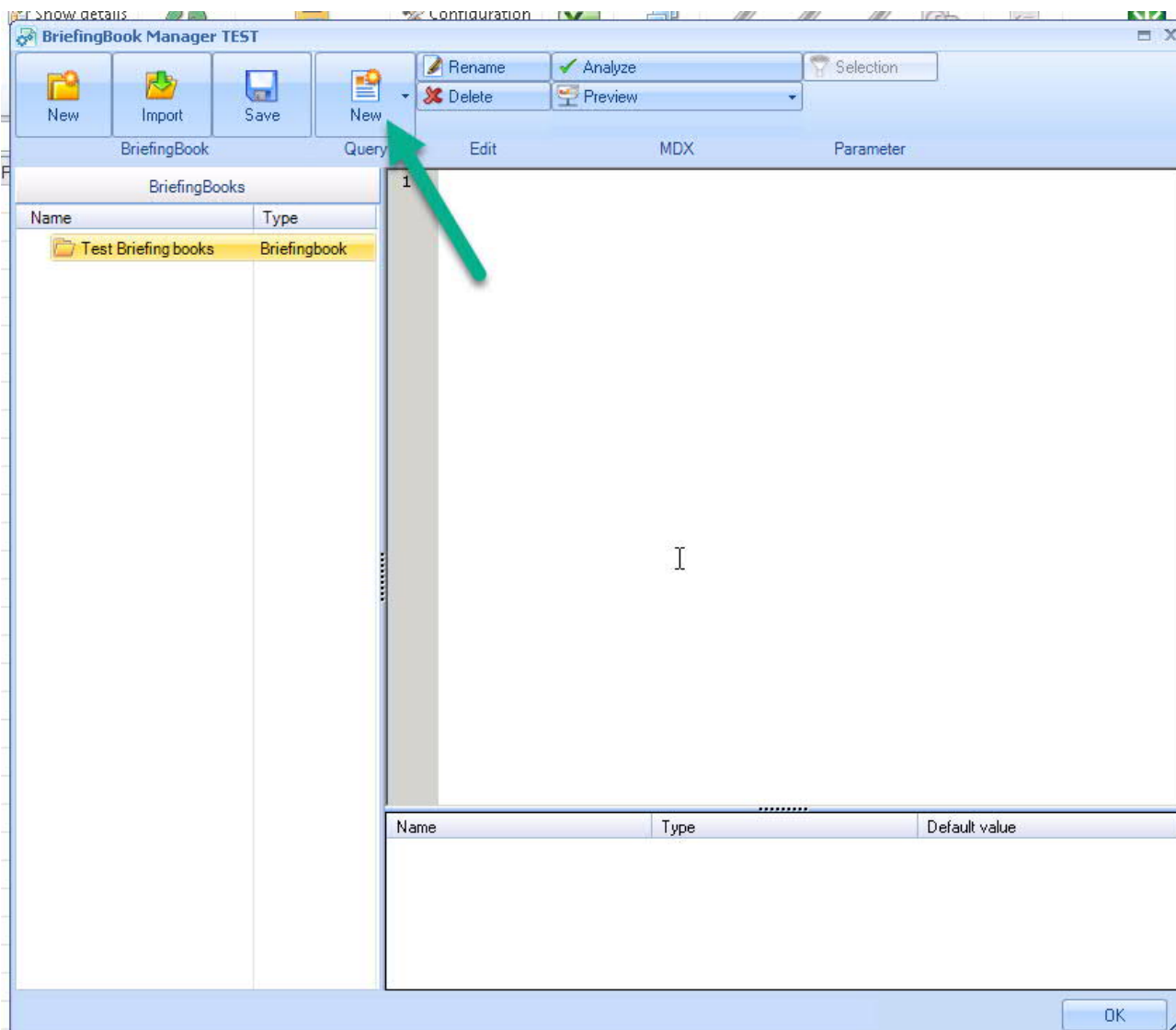
As with SQL, OLAP and BW data-sources, you need to create queries in briefing books



Create a new briefing book

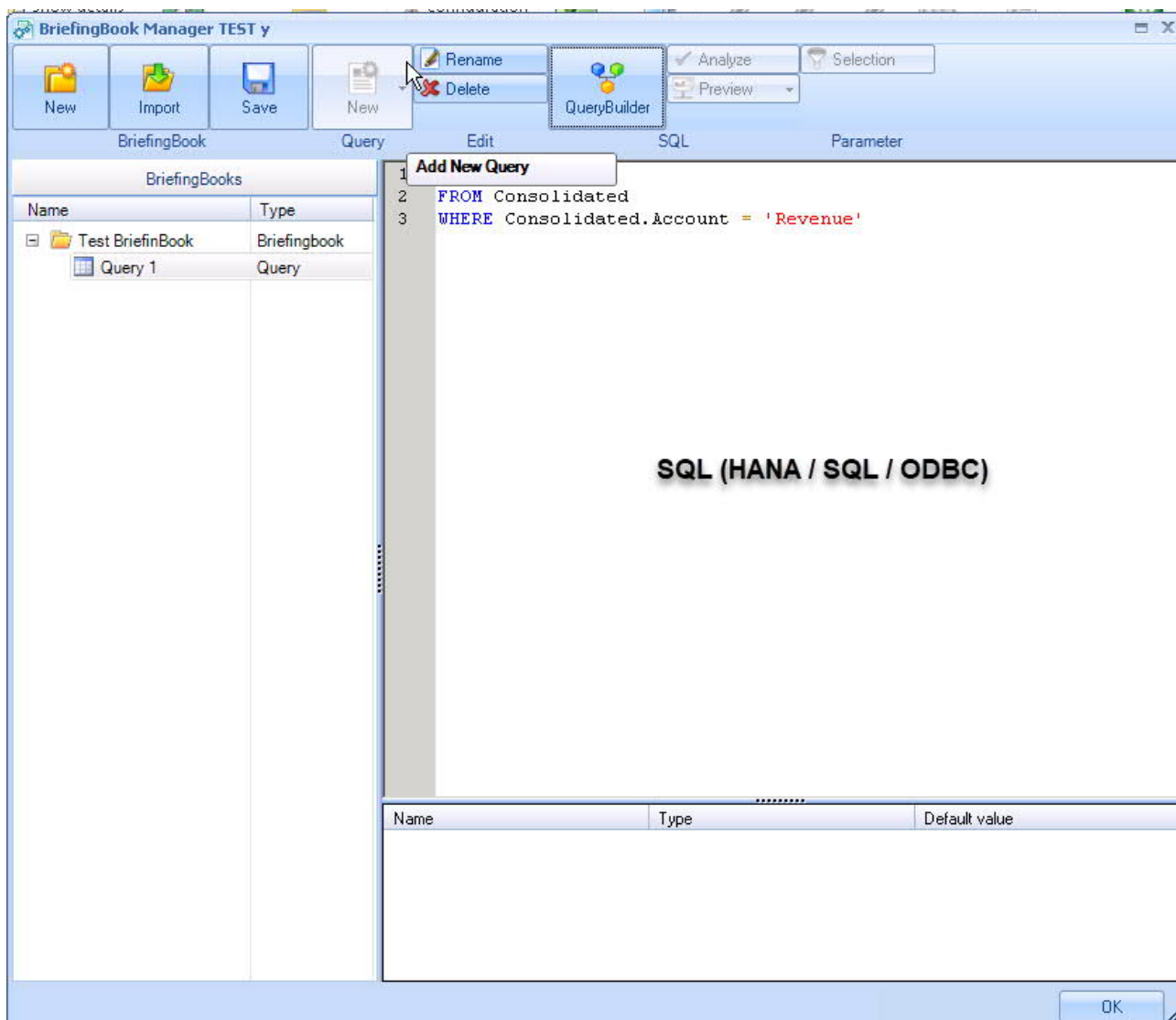


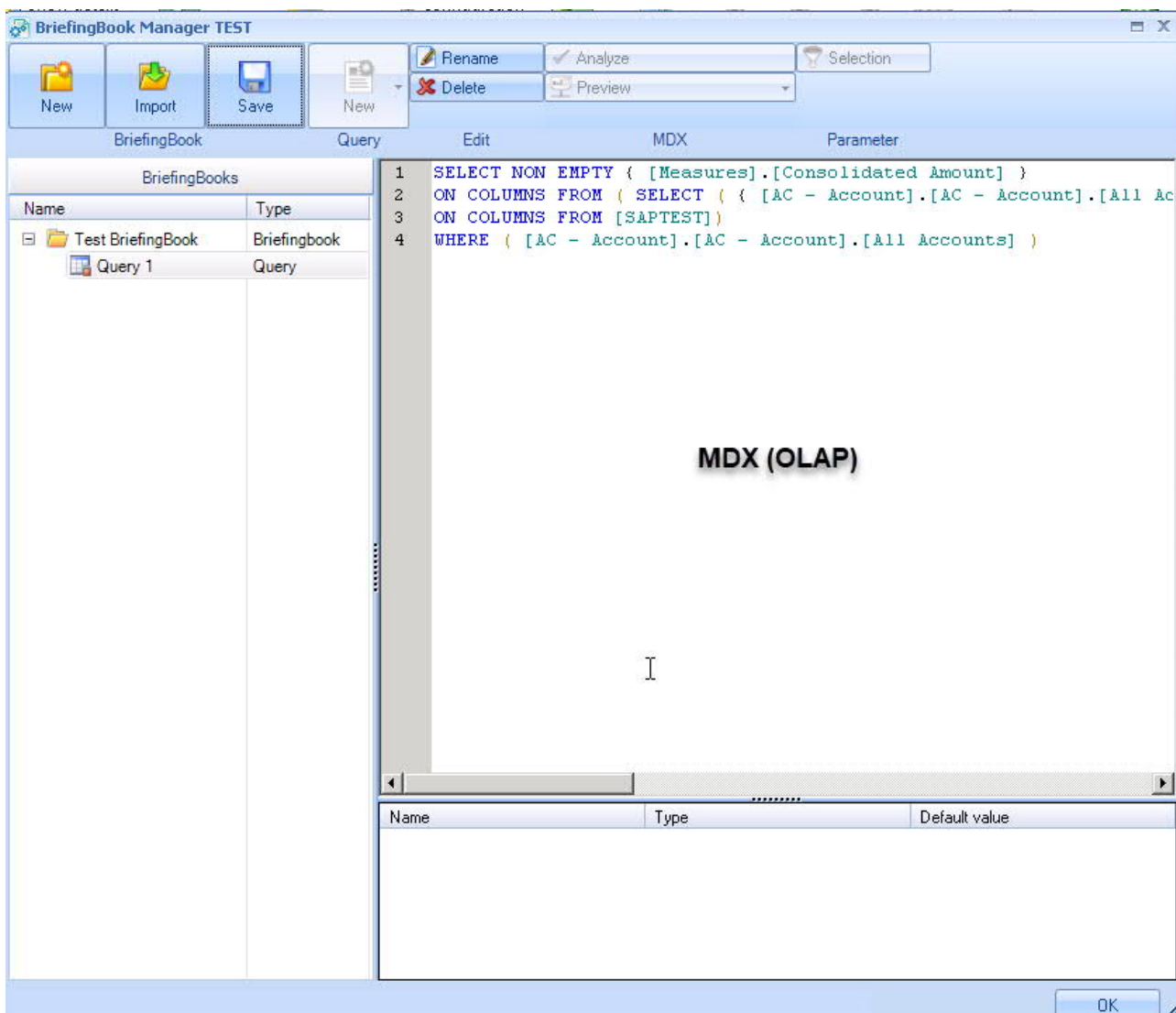
Within the Briefing book, create a query



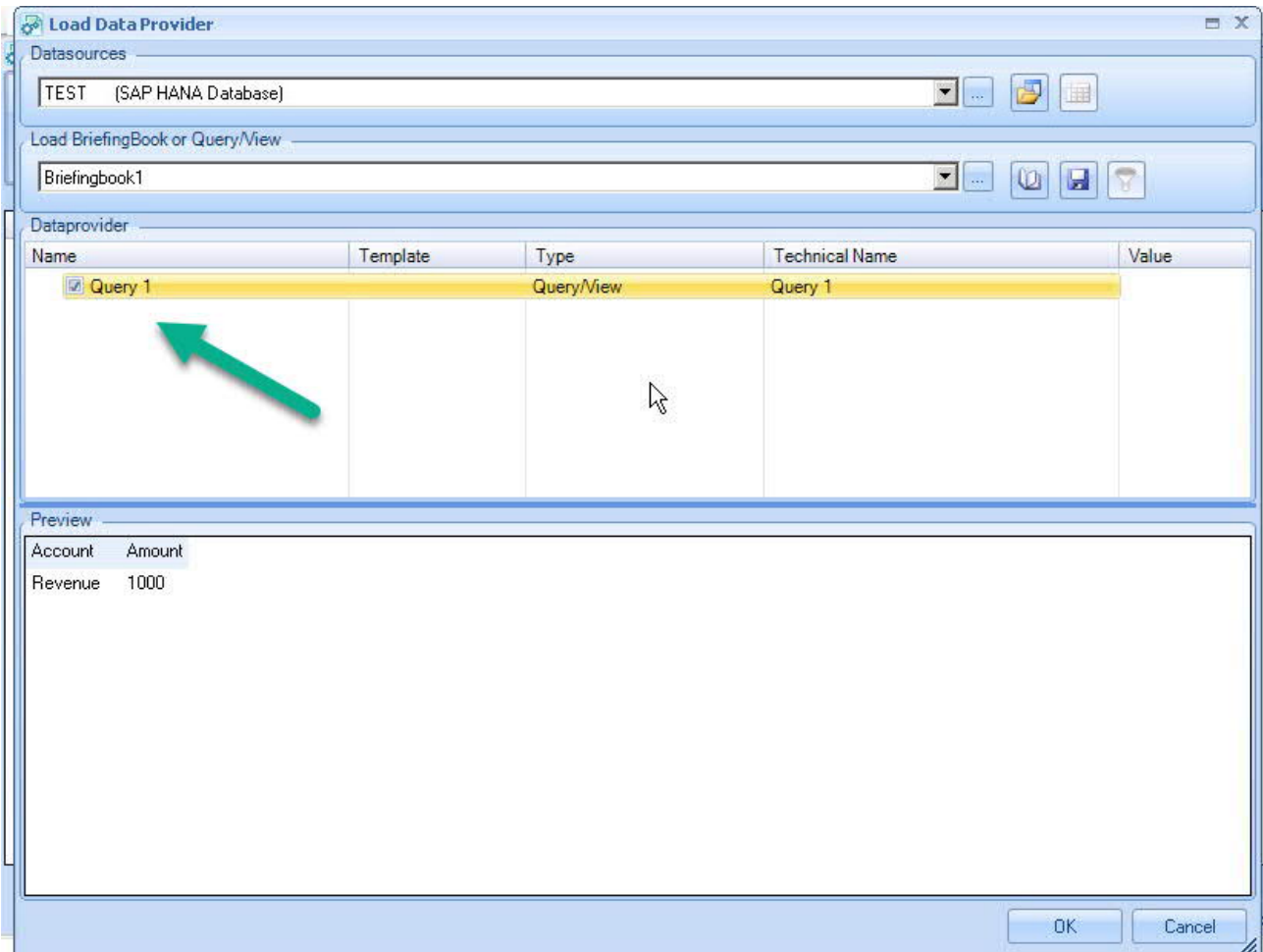
Write the code for your query (note: for HANA, this is HANA SQL)

See: <https://help.sap.com/viewer/4fe29514fd584807ac9f2a04f6754767/2.0.03/en-US/20a6791f751910148d2bfe3814192a01.html>





Once completed, this query can be used in a data-link in Disclosure Management



## Useful Notes

[2667938 - Client cannot connect to HANA data-source](#)

[2282283 - Preparations to use SAP HANA Data Sources](#)



©2018 SAP AG. All rights reserved.

SAP, R/3, SAP NetWeaver, Duet, PartnerEdge, ByDesign, SAP BusinessObjects Explorer, StreamWork, and other SAP products and services mentioned herein as well as their respective logos are trademarks or registered trademarks of SAP AG in Germany and other countries.

Business Objects and the Business Objects logo, BusinessObjects, Crystal Reports, Crystal Decisions, Web Intelligence, Xcelsius, and other Business Objects products and services mentioned herein as well as their respective logos are trademarks or registered trademarks of Business Objects Software Ltd. Business Objects is an SAP company.

Sybase and Adaptive Server, iAnywhere, Sybase 365, SQL Anywhere, and other Sybase products and services mentioned herein as well as their respective logos are trademarks or registered trademarks of Sybase, Inc. Sybase is an SAP company.

All other product and service names mentioned are the trademarks of their respective companies. Data contained in this document serves informational purposes only. National product specifications may vary.

These materials are subject to change without notice. These materials are provided by SAP AG and its affiliated companies ("SAP Group") for informational purposes only, without representation or warranty of any kind, and SAP Group shall not be liable for errors or omissions with respect to the materials. The only warranties for SAP Group products and services are those that are set forth in the express warranty statements accompanying such products and services, if any. Nothing herein should be construed as constituting an additional warranty.

